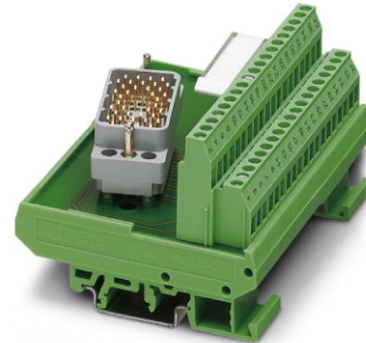


# UMK- EC38/38-XOR

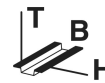
Order No.: 2976297


The illustration shows the left-hand version



<http://eshop.phoenixcontact.de/phoenix/treeViewClick.do?UID=2976297>


VARIOFACE module, for ELCO plug connector, for mounting on NS 35/7.5 or NS 32, with pin strip 8016 right, no. of positions 38



Commercial data	
GTIN (EAN)	 4 017918 089320
sales group	I031
Pack	1 pcs.
Customs tariff	85369010
Catalog page information	Page 292 (IF-2009)

**Product notes**

WEEE/RoHS-compliant since:  
09/15/2006



<http://www.download.phoenixcontact.com>  
Please note that the data given here has been taken from the online catalog. For comprehensive information and data, please refer to the user documentation. The General Terms and Conditions of Use apply to Internet downloads.

Technical data	
<b>General data</b>	
Nominal voltage $U_N$	25 V AC 60 V DC
Max. current carrying capacity per branch	1.5 A
Max. total current of all branches	19 A (38 branches with 0.5 A each)

Number of positions	38
Width	101.5 mm
Height	77 mm
Depth	58.5 mm
Ambient temperature (operation)	-20 °C ... 40 °C
Test voltage	800 V (50 Hz, 1 min.)
Mounting position	Any
Standards/regulations	IEC 60664
	DIN EN 50178
	IEC 62103
Pollution degree	2
Surge voltage category	II

#### Connection data

Connection 1	PCB connection
Connection in acc. with standard	IEC / EN
Type of connection	Screw connection
Conductor cross section solid min.	0.2 mm <sup>2</sup>
Conductor cross section solid max.	4 mm <sup>2</sup>
Conductor cross section stranded min.	0.2 mm <sup>2</sup>
Conductor cross section stranded max.	2.5 mm <sup>2</sup>
Conductor cross section AWG/kcmil min.	24
Conductor cross section AWG/kcmil max	12
Stripping length	8 mm
Screw thread	M3
Connection 2	ELCO connection
Type of connection	Pluggable

#### Certificates / Approvals



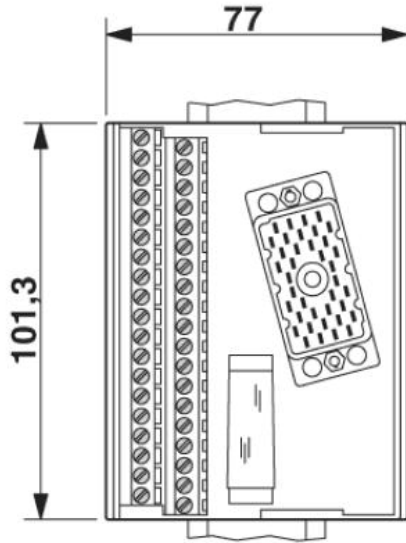
Certification

GOST

**Diagrams/Drawings**

Dimensioned drawing

---



**Address**

PHOENIX CONTACT Deutschland GmbH  
Flachsmarktstr. 8  
32825 Blomberg, Germany  
Phone +49 5235 3 12000  
Fax +49 5235 3 41200  
<http://www.phoenixcontact.de>



© 2011 Phoenix Contact  
Technical modifications reserved;