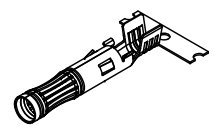
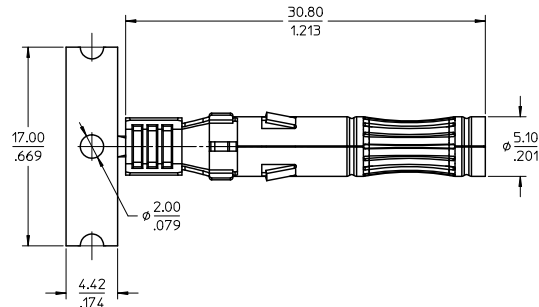
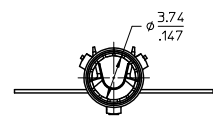
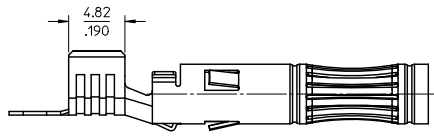
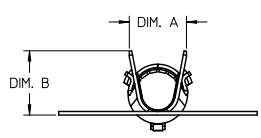


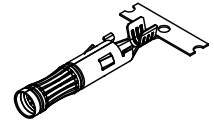
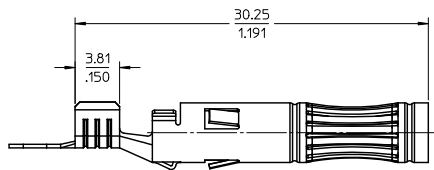
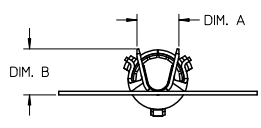
MATERIAL NO. ON STRIP	MATERIAL NO. LOOSE PIECE	CABLE SIZE	DIM. "A"	DIM. "B"	USE WITH HOUSING ASSY
1301970347	1301970336	2.5mm ² / 14AWG	3.58/.141	3.94/.155	1302440203
1301970346	1301970325	4.0-6.0mm ² / 12-10AWG	4.90/.193	5.51/.217	1302440201



12-10 AWG (4.0-6.0mm²)
SCALE 2:1

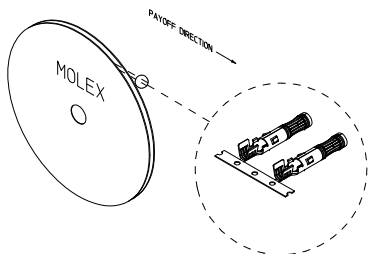


12-10 AWG (4.0-6.0mm²)



14 AWG (2.5mm²)
SCALE 2:1

14 AWG (2.5mm²)
SAME AS 12-10 AWG
EXCEPT AS NOTED



NOTES:

1. MATERIAL: COPPER ALLOY 0.30/.012 THK.
2. FINISH: 2.0METER/80MINCH MIN. SELECTIVE SILVER OVER 1.27METER/50MINCH MIN. NICKEL OVERALL.
3. TERMINAL FOR USE WITH 130244 SERIES SOCKET HOUSING ASSEMBLY. SEE CHART FOR APPLICABLE PART NUMBERS.
4. PRODUCT SPECIFICATION: PS-130244-001
5. STRIP TERMINALS ARE REELED AS SHOWN ABOVE ON XXX SIZE REELS. XXX PARTS PER REEL.
6. APPLICATION TOOLING AND CRIMP SPECIFICATIONS: CONSULT FACTORY.
7. PARTS ARE ROHS COMPLIANT.

PRELIMINARY EC NO: WVA2011-0195 2 DRAWN: CLYORK 2010/11/24 CHKD: DTITUS APPR: DTITUS 2011/01/14 REV:	QUALITY SYMBOLS ▽=0 ▽=0	GENERAL TOLERANCES (UNLESS SPECIFIED) <table border="1"> <thead> <tr> <th></th> <th>mm</th> <th>INCH</th> </tr> </thead> <tbody> <tr> <td>4 PLACES</td> <td>±.05</td> <td>±.001</td> </tr> <tr> <td>3 PLACES</td> <td>±.05</td> <td>±.010</td> </tr> <tr> <td>2 PLACES</td> <td>±0.25</td> <td>±.02</td> </tr> <tr> <td>1 PLACE</td> <td>±0.5</td> <td>±.05</td> </tr> <tr> <td colspan="3">ANGULAR ± 3°</td> </tr> </tbody> </table>		mm	INCH	4 PLACES	±.05	±.001	3 PLACES	±.05	±.010	2 PLACES	±0.25	±.02	1 PLACE	±0.5	±.05	ANGULAR ± 3°			DIMENSION STYLE MM/IN DRAWN BY: CLYORK DATE: 2010/04/15 CHECKED BY: DTITUS DATE: 2010/04/15 APPROVED BY: DTITUS DATE: 2010/05/07	SCALE: 4:1 DESIGN UNITS: METRIC THIRD ANGLE PROJECTION
		mm	INCH																			
	4 PLACES	±.05	±.001																			
	3 PLACES	±.05	±.010																			
2 PLACES	±0.25	±.02																				
1 PLACE	±0.5	±.05																				
ANGULAR ± 3°																						
DRAFT WHERE APPLICABLE MUST REMAIN WITHIN DIMENSIONS			MATERIAL NO.: SEE CHART SIZE: C	TITLE: SOCKET CONTACT, PV SOLAR 14 & 12-10 AWG MOLEX INCORPORATED DOCUMENT NO.: SD-130197-001 SHEET NO.: 1 OF 1																		
THIS DRAWING CONTAINS INFORMATION THAT IS PROPRIETARY TO MOLEX INCORPORATED AND SHOULD NOT BE USED WITHOUT WRITTEN PERMISSION																						