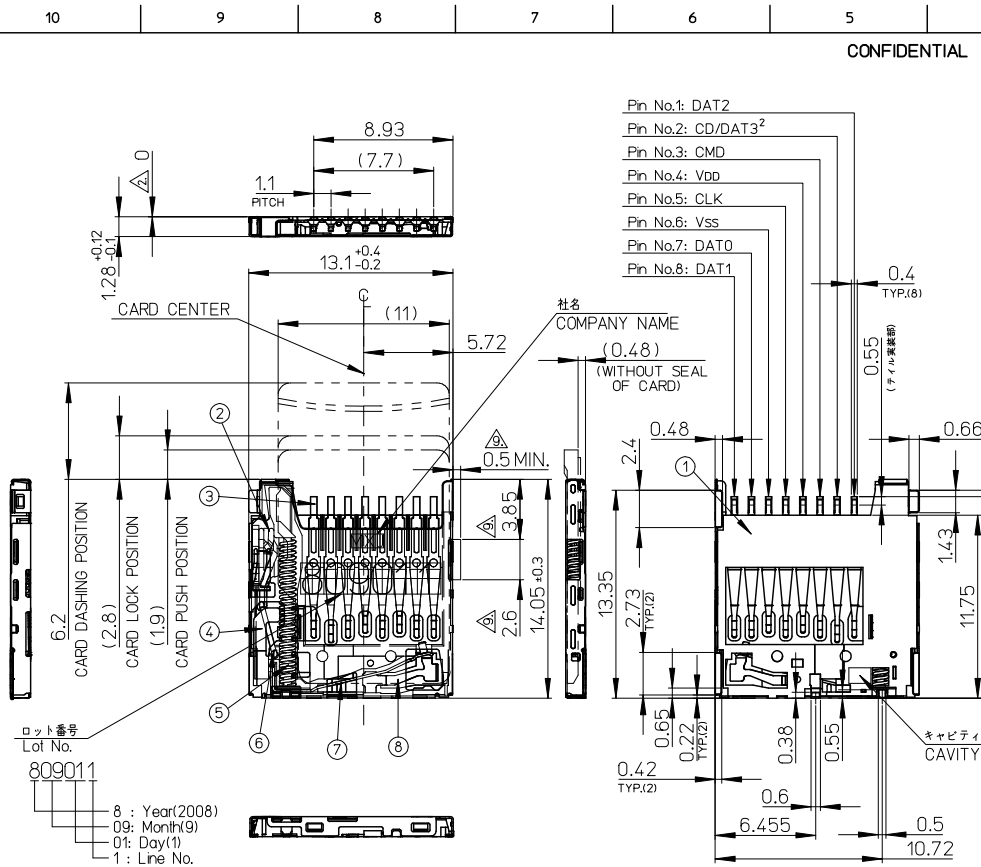


CONFIDENTIAL

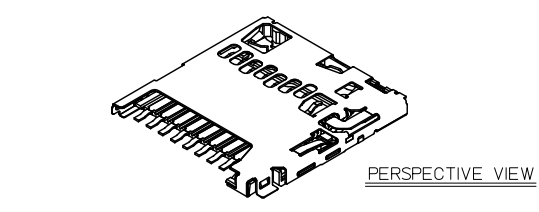


番号 NO.	名称 NAME	材料 MATERIAL	仕上げ(めっき) FINISHES (PLATING)
①	ハウジング HOUSING	液晶ポリマー(LCP)、ガラス充填、UL94 V-0、黒	
②	カムスライダー CAM SLIDER	液晶ポリマー(LCP)、ガラス充填、UL94 V-0、黒	
③	ターミナル TERMINAL	磷青銅 PHOSPHOR BRONZE	接触部: 金めっき (0.5µm MIN.) テール部: 錫めっき (2.0µm MIN.) 下地: ニッケルめっき (1.0µm MIN.) CONTACT AREA: GOLD PLATING (0.5 MICROMETER MINIMUM.) SOLDER TAIL AREA: TIN PLATING (2.0 MICROMETER MINIMUM.) UNDERPLATE: NICKEL OVERALL (1.0 MICROMETER MINIMUM.)
④	シェル SHELL	ステンレス鋼 STAINLESS STEEL	下地: ニッケルめっき NAIL AREA: GOLD PLATING UNDERPLATE: NICKEL OVERALL
⑤	スプリング SPRING	ピアノ線 SWP	全面: ニッケルめっき NICKEL OVERALL
⑥	ピン PIN	ステンレス鋼 STAINLESS STEEL	
⑦	ディテクト レバー DETECT LEVER	磷青銅 PHOSPHOR BRONZE	接触部: 金めっき (0.2µm MIN.) 基板実装部: 金めっき CONTACT AREA: GOLD PLATING (0.2 MICROMETER MINIMUM.) NAIL AREA: GOLD PLATING UNDERPLATE: NICKEL OVERALL
⑧	ディテクト スイッチ DETECT SWITCH	磷青銅 PHOSPHOR BRONZE	接触部: 金めっき (0.2µm MIN.) 基板実装部: 金めっき 下地: ニッケルめっき CONTACT AREA: GOLD PLATING (0.2 MICROMETER MINIMUM.) NAIL AREA: GOLD PLATING UNDERPLATE: NICKEL OVERALL

NOTES

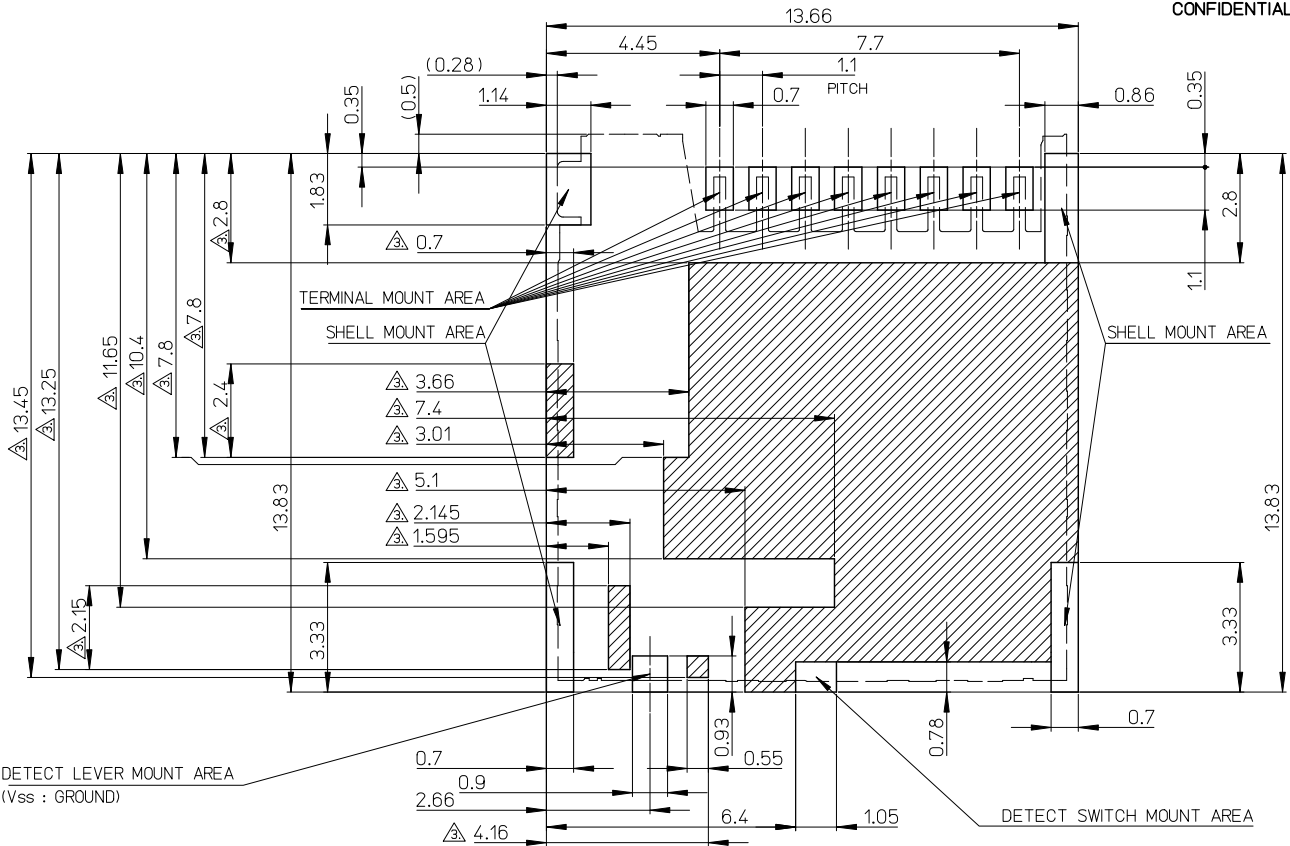
- ターミナル及びネイルの平坦度は 0.1 MAX. (測定用定板面を基準)  
TERMINAL AND NAIL COPLANARITY TO BE 0.1 MAX.(FROM GAUGE PLANE)
  - ロット印字は任意とする。LOT NUMBERING IS TO BE OPTIONAL.
  - △ スタンドオフ寸法 STAND OFF
  - △ パターン禁止エリア PATTERN PROHIBITION AREA
  - カード検知スイッチ DETECT SWITCH
- |                                |            |
|--------------------------------|------------|
| カード挿入時 CARD INSERTING POSITION | クローズ CLOSE |
| カード未挿入時 NO CARD                | オープン OPEN  |
- 肉抜き位置は任意とする。CAVITY IS TO BE OPTIONAL.
  - ロット印字は任意とする。LOT NUMBERING IS TO BE OPTIONAL.
  - △ GND 推奨パターン GND RECOMMENDED PATTERN.
  - ELV 及び RoHS 適合品 ELV AND RoHS COMPLIANT.
  - △ カード裏押し誤挿入時、カード突出エリア (他の部品の設置、非推奨範囲)  
WHEN A CARD IS MISS-MATED IN THE REVERSE ORIENTATION, PART OF THE CARD PROTRUDES FROM THE SHELL DUE TO THE CARD-MISS MATING PREVENTION FEATURE. THEREFORE, NO COMPONENTS ARE ALLOWED TO BE PLACED IN THIS AREA.

503398-0891	8
EMBOSSD PACKAGE	極数 CIRCUITS
オーダー番号 ORDER NO.	
CONNECTOR SERIES No. 503398-0811	



PROPOSED EC NO: JZ000-0891 DRAWN: YMATSUMOTO 2009/09/17 CHECKED BY: CHYKUMITANI 2009/09/17 APPROVED BY: NUKITA 2009/09/17	GENERAL TOLERANCES (UNLESS SPECIFIED)		DIMENSION STYLE MM ONLY		SCALE 4:1	DESIGN UNITS METRIC	THIRD ANGLE PROJECTION
	10 UNDER	±0.2	DRAWN BY YMATSUMOTO	DATE 2009/09/09	TITLE MICRO SD CONN. PUSH/PUSH & NORMAL SUPER-SMALL TYPE		
	10 OVER 30 UNDER	±0.25	CHECKED BY MTOMITA	DATE 2009/09/09	MOLEX INCORPORATED		
	30 OVER	±0.3	APPROVED BY NUKITA	DATE 2009/09/09	DOCUMENT NO. SD-503398-001		
ANGULAR ±1°		MATERIAL NO. SEE CHART		SHEET NO. 1 OF 2		THIS DRAWING CONTAINS INFORMATION THAT IS PROPRIETARY TO MOLEX INCORPORATED AND SHOULD NOT BE USED WITHOUT WRITTEN PERMISSION	

CONFIDENTIAL




 パターン禁止エリア  
 PATTERN PROHIBITION AREA


 DETECT LEVER MOUNT AREA  
 (V<sub>SS</sub> : GROUND)

DETECT SWITCH MOUNT AREA

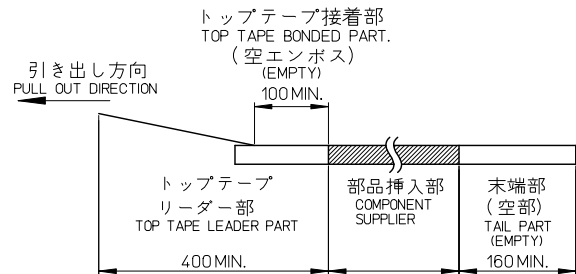
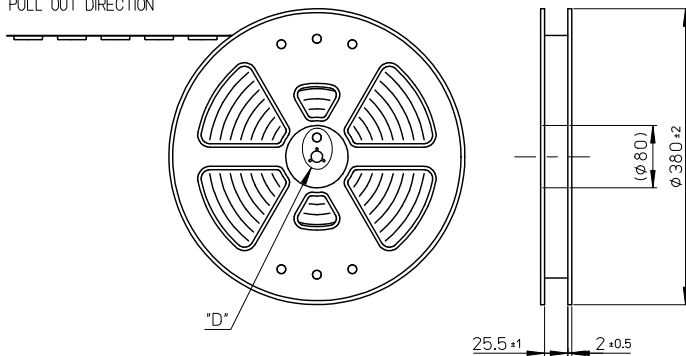
RECOMMENDED  
 PCB PATTERN LAYOUT  
 (GENERAL TOLERANCE : ±0.05)

PROPOSED E.C. NO: J2004-00539 DRAWN BY: YMATSUMOTO CHECKED BY: CHYKUMITOMITA APPROVED BY: NUKITA DATE: 2009/09/17 DATE: 2009/09/17 DATE: 2009/09/17	GENERAL TOLERANCES (UNLESS SPECIFIED)		DIMENSION STYLE	SCALE	DESIGN UNITS	THIRD ANGLE PROJECTION	
			MM ONLY	4:1	METRIC		
	10 UNDER	±0.2	DRAWN BY	DATE	TITLE		
	10 OVER 30 UNDER	±0.25	YMATSUMOTO	2009/09/09	MICRO SD CONN. PUSH/PUSH & NORMAL SUPER-SMALL TYPE		
30 OVER	±0.3	CHECKED BY	DATE	MOLEX INCORPORATED			
ANGULAR	±1 °	MTOMITA	2009/09/09	MATERIAL NO. SEE CHART			
DRAFT WHERE APPLICABLE MUST REMAIN WITHIN DIMENSIONS		APPROVED BY	DATE	DOCUMENT NO.		SHEET NO.	
		NUKITA	2009/09/09	SD-503398-001		2 OF 2	
		THIS DRAWING CONTAINS INFORMATION THAT IS PROPRIETARY TO MOLEX INCORPORATED AND SHOULD NOT BE USED WITHOUT WRITTEN PERMISSION					

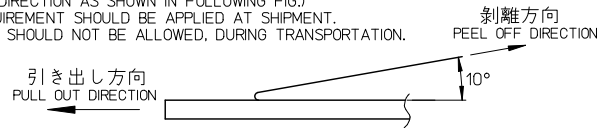
**NOTES**

1. 製品詳細寸法については、SD 図面を参照下さい。  
RE DETAILED DIMENSION, SEE SALES DRAWING.
2. 梱包数量：2400個／リール  
NUMBER OF CONNECTORS：2400 PCS/REEL.
3. リードテープ長さ LEAD TAPE LENGTH.

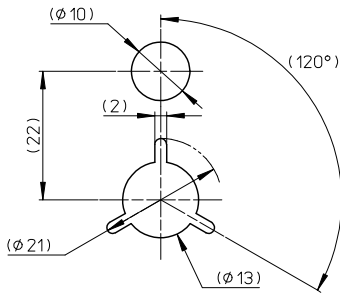
引き出し方向  
PULL OUT DIRECTION



4. トップテープの剥離強度：JIS C0806-3に準拠(剥離方向は下図参照)尚、本規格値は出荷時に適用。(但し、輸送時に剥離が発生しないこと.)  
PEELING OFF FORCE OF TOP TAPE : BASED UPON JIS C0806-3 (PEELING DIRECTION AS SHOWN IN FOLLOWING FIG.) THIS REQUIREMENT SHOULD BE APPLIED AT SHIPMENT. PEEL OFF SHOULD NOT BE ALLOWED, DURING TRANSPORTATION.



5. 材料 MATERIAL  
キャリアテープ (CARRIER TAPE) : ポリスチレン (POLYSTYRENE)  
トップテープ (TOP TAPE) : PET, PE, PEF  
リール (REEL) : ポリスチレン (PS) <リサイクル材含む>  
POLYSTYRENE (PS)<RECYCLE MATERIAL CONTAINED>

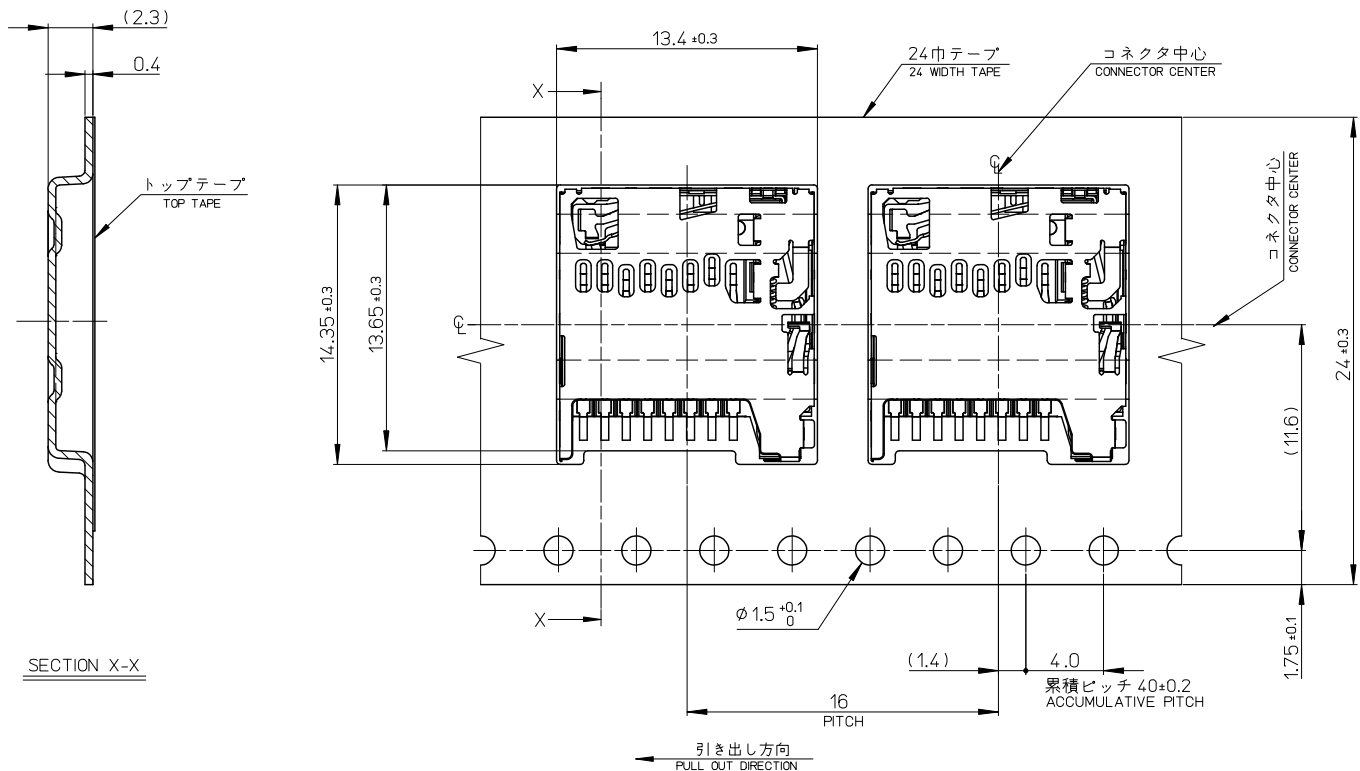


DETAIL "D"

503398-0891		8
EMBOSSED PACKAGE		極数
オーダー番号 ORDER NO.		CIRCUITS

CONNECTOR SERIES No. 503398-0811

PROPOSED E.C. NO: J2010-0539 DRW: YMATSUMOTO 2009/09/17 CHK: YMATSUMOTO 2009/09/17 APPR: NUKITA 2009/09/17	GENERAL TOLERANCES (UNLESS SPECIFIED)		DIMENSION STYLE MM ONLY		SCALE 4:1	DESIGN UNITS METRIC	THIRD ANGLE PROJECTION
	10 UNDER	±0.2	DRAWN BY YMATSUMOTO	DATE 2009/02/02	TITLE EMBOSSED TAPE PACKAGE FOR 503398-08**		
	10 OVER 30 UNDER	±0.25	CHECKED BY MTOMITA	DATE 2009/02/02	MATERIAL NO. SEE CHART		
	30 OVER	±0.3	APPROVED BY NUKITA	DATE 2009/02/02	DOCUMENT NO. SD-503398-002		
ANGULAR ±1°		DRAFT WHERE APPLICABLE MUST REMAIN WITHIN DIMENSIONS		SHEET NO. 1 OF 2		MOLEX INCORPORATED	
SIZE A3				THIS DRAWING CONTAINS INFORMATION THAT IS PROPRIETARY TO MOLEX INCORPORATED AND SHOULD NOT BE USED WITHOUT WRITTEN PERMISSION			



SECTION X-X

PROPOSED E.C. NO: J20010-05539 DRAWN: YMATSUMOTO 2009/09/17 CHECKED: YMATSUMOTO 2009/09/17 APPROVED: NUKITA 2009/09/17	GENERAL TOLERANCES (UNLESS SPECIFIED)		DIMENSION STYLE	SCALE	DESIGN UNITS	THIRD ANGLE PROJECTION
	10 UNDER	± 0.2	MM ONLY	5:1	METRIC	
	10 OVER 30 UNDER	± 0.25	DRAWN BY	TITLE		
	30 OVER	± 0.3	DATE	EMBOSSSED TAPE PACKAGE FOR 503398-08**		
	ANGULAR	± 1 °	CHECKED BY	MATERIAL NO.		
	DRAFT WHERE APPLICABLE MUST REMAIN WITHIN DIMENSIONS		DATE	DOCUMENT NO.		
			DATE	SHEET NO.		
			DATE	2 OF 2		
			DATE	THIS DRAWING CONTAINS INFORMATION THAT IS PROPRIETARY TO MOLEX INCORPORATED AND SHOULD NOT BE USED WITHOUT WRITTEN PERMISSION		