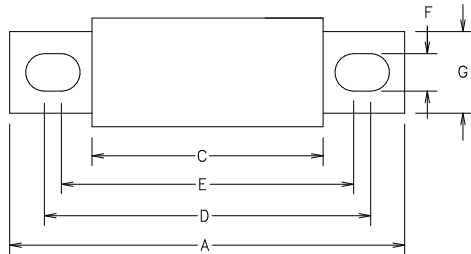


OUTLINE REF.	MOUNTING** TYPE	DIMENSIONS IN INCHES (mm in parentheses)							
		A	B	C	D	E	F	G	H
LA70Q35 TO 60	4	4.37 (111)	1.22 (31.0)	1.96 (49.8)	3.69 (93.7)	2.91 (73.9)	0.34 (8.6)	1.00 (25.4)	0.19 (4.8)
LA70Q70 TO 100	4	4.37 (111)	1.22 (31.0)	1.96 (49.8)	3.69 (93.7)	2.91 (73.9)	0.41 (10.4)	1.00 (25.4)	0.19 (4.8)
LA70Q125 TO 200	4	5.09 (129)	1.50 (38.1)	1.96 (49.8)	4.16 (106)	2.91 (73.9)	0.41 (10.4)	1.00 (25.4)	0.25 (6.4)
LA70Q250 TO 400	4	5.09 (129)	2.00 (50.8)	1.96 (49.8)	4.00 (102)	2.94 (74.7)	0.56 (14.2)	1.50 (38.1)	0.25 (6.4)
LA70Q450 TO 600	4	7.09 (180)	2.50 (63.5)	1.96 (49.8)	5.72 (145)	3.25 (82.6)	0.56 (14.2)	2.00 (50.8)	0.38 (9.7)

\*\* MOUNTING TYPE: 4 - BOLT-IN BLADES

PART NUMBER	AMPERE RATING	UPC CODE
LA70Q354	35	079458 15307
LA70Q404	40	079458 15308
LA70Q504	50	079458 15309
LA70Q604	60	079458 15310
LA70Q704	70	079458 15311
LA70Q804	80	079458 15312
LA70Q904	90	079458 15313
LA70Q1004	100	079458 15314
LA70Q1254	125	079458 15315
LA70Q1504	150	079458 15316
LA70Q1754	175	079458 15317
LA70Q2004	200	079458 15318
LA70Q2504	250	079458 15319
LA70Q3004	300	079458 15320
LA70Q3504	350	079458 15321
LA70Q4004	400	079458 15322
LA70Q4504	450	079458 15323
LA70Q5004	500	079458 15324
LA70Q6004	600	079458 15325



**RATINGS**

AC: 35-600A 700VAC, 100kA I.R.  
DC: 35-600A 650VDC, 100kA I.R.

MIN. FUSE LABEL INFORMATION:  
FUSES WILL BE LABELED WITH THE FOLLOWING INFORMATION:

- LITTELFUSE, INC.
- FUSE SERIES & AMP
- VOLTAGE RANGE
- INTERRUPT RATING
- UL RECOGNIZED SYMBOL
- MOUNTING TYPE

EACH BOX WILL BE LABELED WITH THE FOLLOWING INFORMATION:

- LITTELFUSE LOGO
- FUSE SERIES & AMP
- BAR CODE TO COMPLY WITH LITTELFUSE SPECIFICATION LS-000030.

BILL OF MATERIAL		U/M		
NO	COMPONENT NO	DESCRIPTION	QTY/M	U/M
FINISH				
MATERIAL SPEC				
1	9	DRW	SCALE	1:2
2	10	MRD	DATE	02/21/03
3	12	CHK	DATE	02/26/03
4	13	TN	DATE	02/27/03
5	14	APPD	DATE	02/27/03
6	15	ND	LBS/WT	
7	16	ND	TOLERANCE UNLESS OTHERWISE SPECIFIED	
8	17	ND	THREE PLACE DEC ±0.01	
8	17	ND	FRACTION ±	
8	17	ND	ANGULAR ±1°	
<b>TITLE</b>				
LA70Q 35 THRU 600A				
DRAWING NO. LA70Q000				
REVISION A				
FINAL				

REVISION				CHK	APD
A	60996-RELEASED	02/21/03	MRD	TN	ND

UNLESS OTHERWISE SPECIFIED, DIMENSIONS DO NOT INCLUDE PLATING.

IDENTIFIES CRITICAL CHARACTERISTICS.

IDENTIFIES CPK DIMENSIONS.-MINIMUM CPK VALUE

IDENTIFIES A CHARACTERISTIC THAT PROVIDES AN INDICATION OF PROCESS PERFORMANCE. PROCEDURE FOR MEASUREMENT (S) AND TRACKING TO BE DEFINED IN

IDENTIFIES THE FUSE INSPECTION INSTRUCTIONS.

IDENTIFIES CP DIMENSIONS.-MINIMUM CP VALUE

IDENTIFIES THE MINIMUM DIMENSIONS

IDENTIFIES THE MINIMUM DIMENSIONS AND INITIALLY LOCATED TO ALLOW FOR MAXIMUM TOOL LIFE.

CONTROLLED DOCUMENT