

TLN Series Telecommunications Power Fuse

170 VDC • Current-Limiting • 1 – 600 Amperes



Specifications

Voltage Rating:	170 VDC
Interrupting Rating:	100,000 amperes
Ampere Range:	1 – 600 amperes
Approvals:	UL Recognized under the components program (File No: E71611)

Ampere Ratings

1	15	40	80	150	300	600
3	20	45	90	175	350	
5	25	50	100	200	400	
6	30	60	110	225	450	
10	35	70	125	250	500	

Example part number (series & amperage): TLN450

Recommended Fuse Blocks

LR250 Series
Refer to the Blocks & Holders section of this catalog for additional information.

Features

- 170 VDC
- Fast acting and current-limiting
- 1 to 600 amperes
- Dimensionally similar to 250V Class R fuses

Replaces competitors' TPN and TGN Series.

The TLN Series fuses are specifically designed for the protection of telecommunications DC power distribution circuits.

Ampere Rating	Dimensions in Inches (mm in parentheses)									
	A	B	C	D	E	F	G	H	J	K
Figure 1										
1 – 30	2 (50.8)	½ (12.7)	½ (12.7)	9/16 (14.3)	5/64 (2.0)	5/32 (4.0)	3/8 (9.5)	—	—	—
35 – 60	3 (76.2)	¾ (19.1)	5/8 (15.9)	13/16 (20.6)	3/32 (2.4)	3/16 (4.8)	5/8 (15.9)	—	—	—
Figure 2										
70 – 100	5 7/8 (149.2)	1 (25.4)	1 1/16 (27.0)	1 1/16 (27.0)	1/8 (3.2)	3/4 (19.1)	1 1/4 (31.6)	1/4 (6.4)	9/32 (7.1)	1/2 (12.7)
110 – 200	7 1/8 (181.0)	1 1/2 (38.1)	1 15/32 (37.3)	1 19/32 (40.5)	3/16 (4.8)	1 1/8 (28.6)	1 27/32 (46.8)	7/16 (11.1)	9/32 (7.1)	1 1/16 (17.5)
225 – 400	8 5/8 (219.1)	2 (50.8)	1 15/16 (49.2)	2 3/32 (53.2)	1/4 (6.4)	1 5/8 (41.3)	2 11/32 (59.5)	5/8 (15.9)	13/32 (10.3)	1 5/16 (23.8)
450 – 600	10 3/8 (263.5)	2 1/2 (63.5)	2 3/8 (60.3)	2 19/32 (65.9)	1/4 (6.4)	2 (50.8)	2 27/32 (72.2)	3/4 (19.1)	17/32 (13.5)	1 1/8 (28.6)

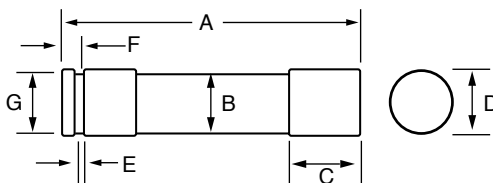


FIG. 1

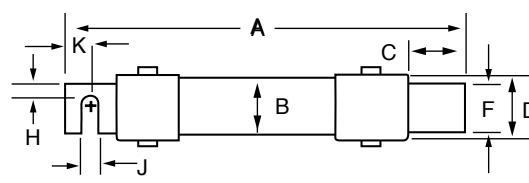


FIG. 2