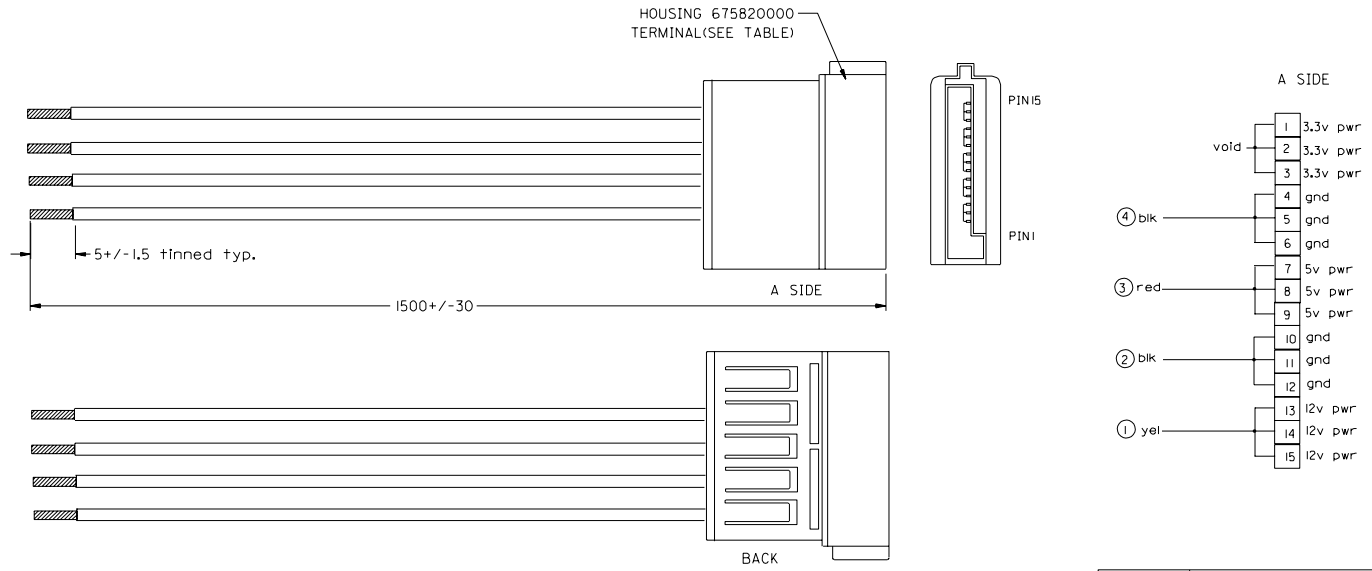


6 5 4 3 2 1



NOTE: 1. ELECTRIC PERFORMANCE:  
 ▽ DIELECTRIC STRENGTH: 500 V DC/0.01Sec.  
 INSULATION RESISTANCE: 100M OHMS Min.  
 CONDUCTIVE RESISTANCE: 2 OHMS Max.  
 2. HOUSING 675820000:  
 POLYESTER(PBT), UL94V-0(BLACK)

887511411	675810001 30u'
887511410	675810000 GOLD FLASH
MATERIAL NO.	TERMINAL

4	UL1007 #18 BLK 887711300
3	UL1007 #18 RED 887711301
2	UL1007 #18 BLK 887711300
1	UL1007 #18 YEL 887711303
Item	WIRE TYPE

CONNECTION DIAGRAM	
DIMENSIONS:	SHT REV
<input type="checkbox"/> mm <input type="checkbox"/> INCH	<input type="checkbox"/> mm <input type="checkbox"/> INCH
<input type="checkbox"/> mm ONLY	REVISE ON CAD ONLY

EC NO. DG2003-0009 DRWN: BENTZ 03/04/07 CHK: BENTZ 03/04/07 APPR: BOCHEN 03/04/07	EC NO. DG2003-0005 DRWN: BENTZ 02/08/08 CHK: BENTZ 02/08/08 APPR: TONY WONG 02/08/08	DESCRIPTION REV	QUALITY SYMBOLS MAJOR = ▽ CRITICAL = ▽-1	GENERAL TOLERANCES: (UNLESS SPECIFIED)			SCALE	DESIGN UNITS	THIRD ANGLE PROJECTION	TITLE: S-ATA POWER CABLE ASSEMBLY	MATERIAL NO. SEE TABLE	DRAWING NO. SD-88755-002	SHEET NO. 1 OF 1
				4 PLACES	±0.	±.	mm	INCH					
				3 PLACES	±0.	±.	DRAWN BY & DATE BENTZ 02/08/08		MOLEX INCORPORATED				
				2 PLACES	±0.	±.	CHECKED BY & DATE Tony Wong 02/08/08						
				1 PLACE	±0.	±.	APPROVED BY & DATE Tony Wong 02/08/08						
				ANGULAR: ± 0			CAD FILENAME S88755AB.S01						
THIS DRAWING CONTAINS INFORMATION THAT IS PROPRIETARY TO MOLEX INCORPORATED AND SHOULD NOT BE USED WITHOUT WRITTEN PERMISSION.												SIZE A4	

WBORD.A.BOR REV A  
97/05/14 LEVEL 3