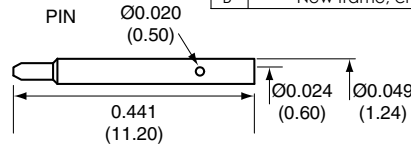
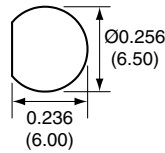


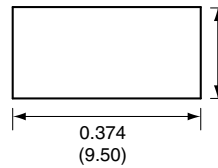
Description	Material	Finish
Body	Brass	Nickel
Pin	Brass	Gold
Insulation	Teflon	Teflon
O Ring	Si Rubber	Rubber
Crimp Ring	Brass	Nickel
Washer	Brass	Nickel
Nut	Brass	Nickel
Heat Shrink	Polyolefin	Black

RECOMMENDED MOUNTING HOLE

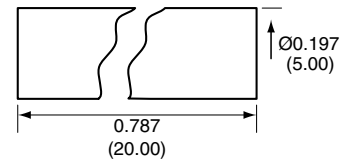


REVISIONS			
REV	DESCRIPTION	DATE	APPV
A	Initial release	6/1/06	CJ
B	New frame; change crimp size; add heat shrink	3/29/11	CJ

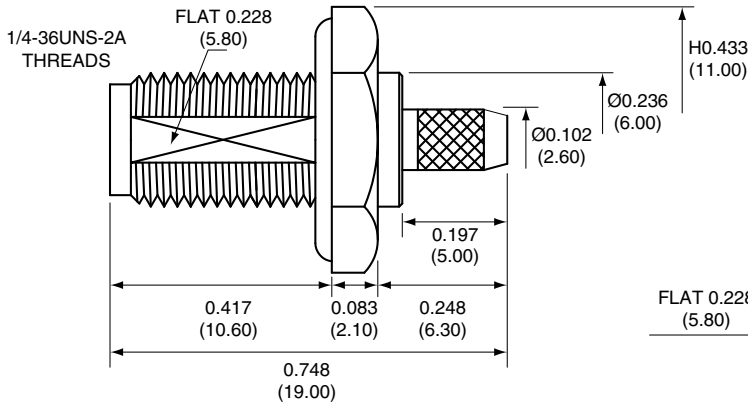
CRIMP RING



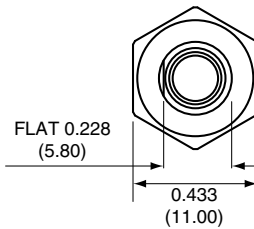
HEAT SHRINK



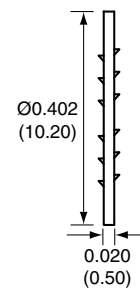
SIDE VIEW



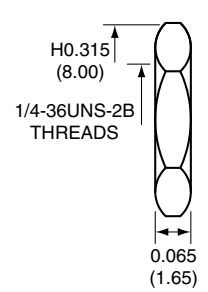
BACK VIEW



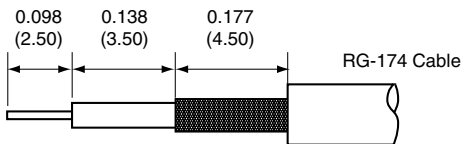
WASHER



NUT



RECOMMENDED CABLE STRIPPING DIMENSIONS



NOTES: (UNLESS OTHERWISE SPECIFIED)

- ALL DIMENSIONS ARE IN INCHES [mm].
- DIMENSIONS APPLY AFTER FINISHING.
- MANUFACTURE TO BE COMPLIANT WITH EU RoHS DIRECTIVE.
- SAFETY BREAK ALL SHARP CORNERS AND EDGES .02 MAXIMUM.

WARNING: THIS DRAWING CONTAINS PROPRIETARY INFORMATION THAT IS THE SOLE PROPERTY OF CONNECTOR CITY, AND SHALL BE TREATED AS SUCH. NO DISCLOSURE OR REPRODUCTION OF THIS DOCUMENT IS PERMITTED, IN WHOLE OR IN PART, WITHOUT THE EXPRESS WRITTEN PERMISSION OF CONNECTOR CITY OR ITS DESIGNATED AGENTS.

CONNECTOR CITY
THE VALUE OF CONNECTIONS
159 ORT LANE
MERLIN, OR 97532

TITLE:
RP-SMA FEMALE, BULKHEAD MOUNT, CABLE
END CRIMP WITH O-RING FOR RG174 CABLE

CONREVSMA014 ASSEMBLY INSTRUCTIONS

- Solder the pin to the center conductor.
- Insert the pin, center conductor, and insulation into the body.
- Wrap the braid around the tail of the body and crimp the ring with a 0.128" hex crimp tool (or one labeled for use with RG-174 cable).

MATERIAL:	TOLERANCES: .020 [0.50]-.200 [5.00]= ± .008 [0.20] .200 [5.00]-1.200 [30.00]= ± .016 [0.40] 1.20 [30.0]-4.75 [120.0]= ± .024 [0.60] 4.75 [120.0]-12.40 [315.0]= ± .040 [1.0]	PROJECTION:
FINISH:	DRAWN: CJ ENGR:	ANGLES: ± 1° DT: 6/1/06 DT:

SIZE A	DWG. NO. CONREVSMA014	REV B
SCALE:	DO NOT SCALE DRAWING	SHEET 1 OF 1

LDCFDCC_A