

**Universal Ferrule Crimper**

**Front Conductor Entry**

One die crimps a wide range of insulated and uninsulated ferrule sizes. Three Universal Ferrule Crimpers are offered to crimp different ferrule and wire size ranges up to 16mm<sup>2</sup> (6 AWG).

- Positive ratcheting with spring return
- Trapezoidal crimp geometry
- Comfort grip plastic handle
- Hardened steel frame, matte black

**Universal Ferrule Crimper**



Part No.	Wire/ AWG	Ferrule mm <sup>2</sup>	Std. Pk.
<b>E110.000</b>	26 - 10	0.14 - 6	1

Replacement Spring Set:

<b>185140008</b>	Handle Spring Set
<b>318001002</b>	Ratchet Spring

**Universal Ferrule Crimper**



Part No.	Wire/ AWG	Ferrule mm <sup>2</sup>	Std. Pk.
<b>E110.005</b>	20 - 8	0.5 - 10	1

Replacement Spring Set:

<b>185140008</b>	Handle Spring Set
<b>318001002</b>	Ratchet Spring

**Universal Ferrule Crimper**



Part No.	Wire/ AWG	Ferrule mm <sup>2</sup>	Std. Pk.
<b>E110.010</b>	8 - 6	10 - 16	1

Replacement Spring Set:

<b>185140008</b>	Handle Spring Set
<b>318001002</b>	Ratchet Spring

**Ferrule Crimper**

**Side Conductor Entry**

Individual crimp cavities conform to industry standard insulated and uninsulated ferrules from 25-50mm<sup>2</sup> (4-1 AWG).

- Positive ratcheting with spring return
- Emergency release
- Trapezoidal crimp geometry
- Comfort grip plastic handle
- Hardened steel frame, matte black

**Ferrule Crimper**



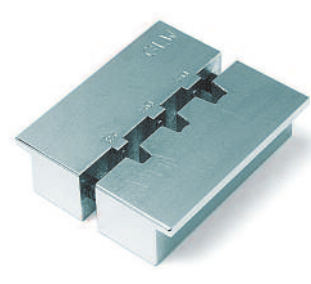
Part No.	Wire/ AWG	Ferrule mm <sup>2</sup>	Std. Pk.
<b>E110.015</b>	4 - 2	25 - 35	1

**Ferrule Crimper**



Part No.	Wire/ AWG	Ferrule mm <sup>2</sup>	Std. Pk.
<b>E110.020</b>	1	50	1

**Ferrule Crimper**



Part No.	Wire/ AWG	Ferrule mm <sup>2</sup>	Std. Pk.
<b>22.030</b>	2/0-250 MCM	70 - 150	1