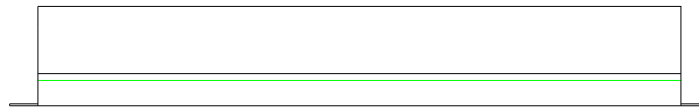
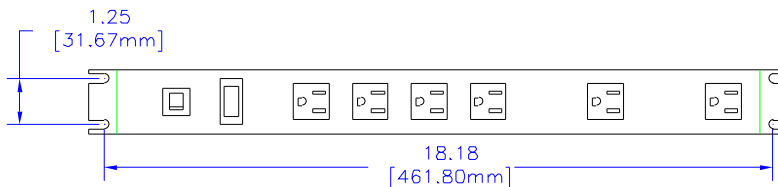


NOTES

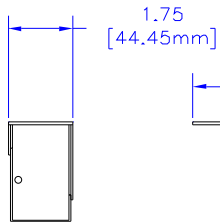
DESIGNED FOR POWER DISTRIBUTION FROM FRONT OF UNIT.
TOUGH STEEL CASE AVAILABLE IN ASA 61 GRAY OR BLACK POWDER PAINT.
HEAVY-DUTY POWER CORD - 14/3 SJTW FOR EXTREME TEMPERATURE RANGES. COMES IN 6' OR 15' LONG.
INTEGRAL MOLDED PLUG AVAILABLE IN STRAIGHT BLADE (NEMA 5-15P) OR TWIST-LOCK (NEMA L5-15P) CONFIGURATIONS.
COMES WITH RED PILOT LIGHT TO INDICATE POWER ON.
INCLUDES 15A, 125VAC CIRCUIT BREAKER TO PREVENT LINE OVERLOAD.
CSA CERTIFIED, UL RECONIZED-UNDER THE COMPONENT PROGRAM OF UL



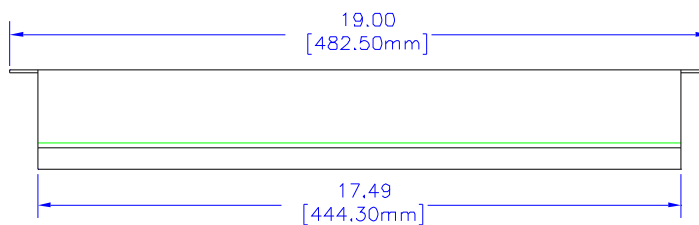
SIDE VIEW



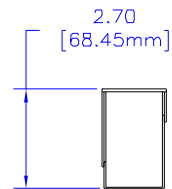
TOP VIEW



L. END VIEW



SIDE VIEW



R. END VIEW



BOTTOM VIEW

*SEE CATALOG FOR THE COMPLETE PART NUMBER BASED ON THE OPTIONS LISTED IN THE NOTE SECTION

UNLESS OTHERWISE SPECIFIED
DIMENSIONS ARE IN INCHES
X +/- .1
XX +/- .02
XXX +/- .015
CUTS +/- .005
ANGLES +/- .2 DEG.
SOLDERABLE SURFACES
HAMMOND MANUFACTURING RIGHTS TO THIS DRAWING OR THE DRAWING IS INTENDED TO BE USED AS A REFERENCE FOR ENGINEERING INFORMATION ONLY. NO INFORMATION MAY BE USED TO REPRODUCE, REPEAT, OR MIMIC WITHOUT PERMISSION FROM HAMMOND MANUFACTURING.



HAMMOND
MANUFACTURING

WEB: WWW.HAMMONDMFG.COM

TITLE	
HAMMOND RACK MOUNT POWER PANELS	
DRAWN BY	MJM
DATE	02/09/01
SCALE	PAGE 1 OF 1
PART NUMBER	1582T6****