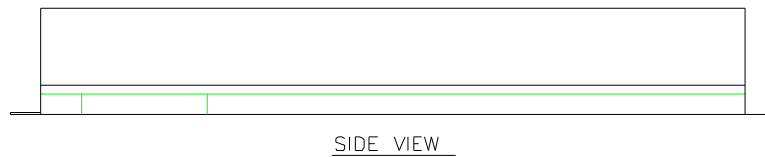
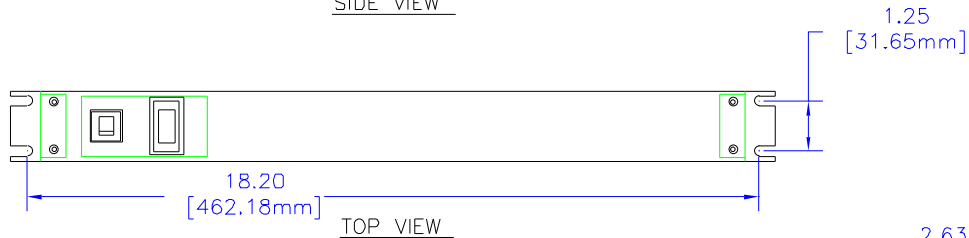


NOTES

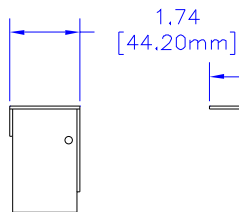
DESIGNED FOR POWER DISTRIBUTION FROM REAR OF UNIT.
TOUGH STEEL CASE AVAILABLE IN ASA 61 GRAY OR BLACK POWDER PAINT.
HEAVY-DUTY POWER CORD - 14/3 SJTW FOR EXTREME TEMPERATURE RANGES. COMES IN 6' OR 15' LONG.
INTEGRAL MOLDED PLUG AVAILABLE IN STRAIGHT BLADE (NEMA 5-15P) OR TWIST-LOCK (NEMA L5-15P) CONFIGURATIONS.
COMES WITH READ PILOT LIGHT TO INDICATE POWER ON.
INCLUDES 15A, 125VAC CIRCUIT BREAKER TO PREVENT LINE OVERLOAD.
CSA CERTIFIED, UL RECONIZED-UNDER THE COMPONENT PROGRAM OF UL



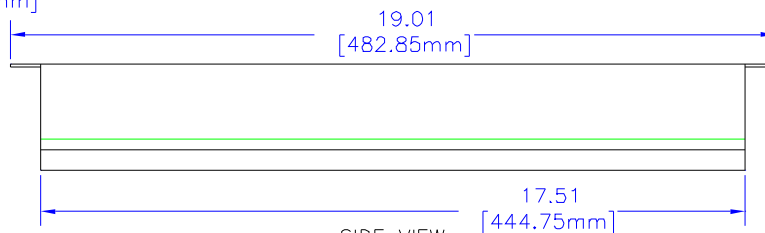
SIDE VIEW



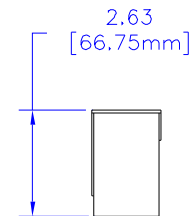
TOP VIEW



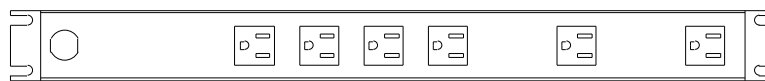
L. END VIEW



SIDE VIEW



R. END VIEW



BOTTOM VIEW

*SEE CATALOG FOR THE COMPLETE PART NUMBER BASED ON THE OPTIONS LISTED IN THE NOTE SECTION

UNLESS OTHERWISE SPECIFIED
DIMENSIONS ARE IN INCHES
FRACTIONS 1/16 - 1/8
DECIMALS .005 - .015
ANGLES 1/2 - 2 DEG.
DIMENSIONS SHOWN IN PARENTHESES REFER TO THE METRIC SYSTEM. THIS DRAWING IS INTENDED TO BE USED AS A REFERENCE FOR DIMENSIONS EXCEPTING THAT THE INFORMATION MAY NOT BE USED TO MANUFACTURE, REPAIR, OR MAINTAIN WITHOUT PERMISSION FROM HAMMOND MANUFACTURING.



HAMMOND
MANUFACTURING

WEB: WWW.HAMMONDMFG.COM

TITLE	
HAMMOND RACK MOUNT POWER PANELS	
DRAWN BY	MJM
DATE	02/09/01
SCALE	PAGE 1 OF 1
PART NUMBER	1583T6****