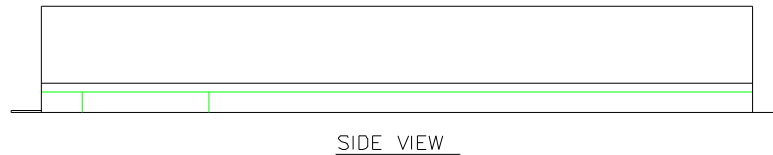
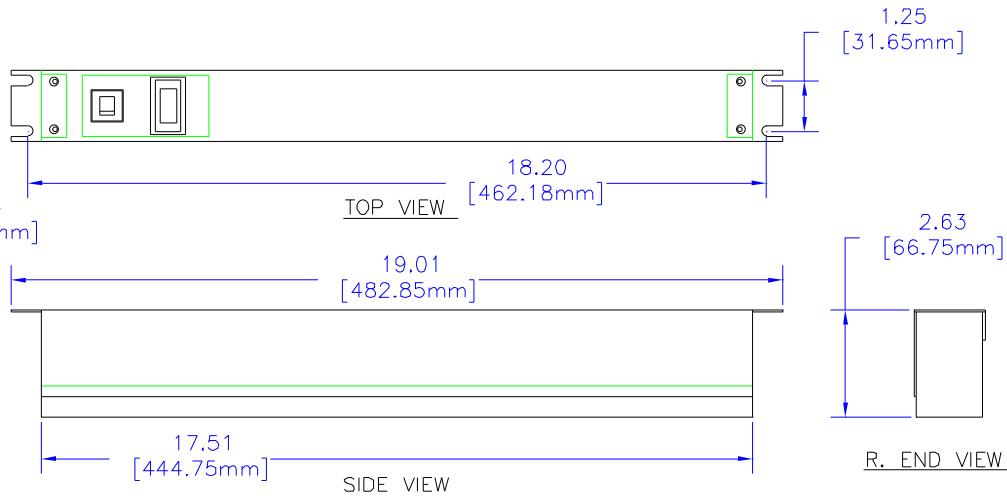


NOTES

DESIGNED FOR POWER DISTRIBUTION FROM REAR OF UNIT.
TOUGH STEEL CASE AVAILABLE IN ASA 61 GRAY OR BLACK POWDER PAINT.
HEAVY-DUTY POWER CORD - 14/3 SJTW FOR EXTREME TEMPERATURE RANGES. COMES IN 6' OR 15' LONG.
INTEGRAL MOLDED PLUG AVAILABLE IN STRAIGHT BLADE (NEMA 5-15P) OR TWIST-LOCK (NEMA L5-15P) CONFIGURATIONS.
COMES WITH READ PILOT LIGHT TO INDICATE POWER ON.
INCLUDES 15A, 125VAC CIRCUIT BREAKER TO PREVENT LINE OVERLOAD.
CSA CERTIFIED, UL RECONIZED-UNDER THE COMPONENT PROGRAM OF UL



SIDE VIEW

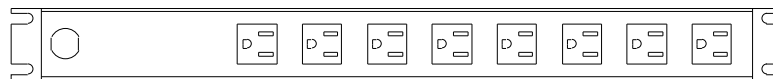


TOP VIEW

SIDE VIEW

L. END VIEW

R. END VIEW



BOTTOM VIEW

*SEE CATALOG FOR THE COMPLETE PART NUMBER BASED ON THE OPTIONS LISTED IN THE NOTE SECTION

UNLESS OTHERWISE SPECIFIED
DIMENSIONS ARE IN INCHES
X +/- .1
XX +/- .05
XXX +/- .015
CUTS +/- .005
ANGLES +/- .5 DEG
TOLERANCES UNLESS OTHERWISE SPECIFIED
TO THE NEAREST .010 INCHES, 0.50
INTENDED TO BE USED AS A REFERENCE FOR
ENGINEERING INFORMATION ONLY. THIS
INFORMATION MAY NOT BE USED TO
REPRODUCE, REPLICATE, REPRINT, REPRODUCE
PERMISSION FROM HAMMOND MANUFACTURING



HAMMOND
MANUFACTURING

WEB: WWW.HAMMONDMFG.COM

TITLE	
HAMMOND RACK MOUNT POWER PANELS	
DRAWN BY	MJM
DATE	02/09/01
SCALE	PAGE 1 OF 1
PART NUMBER	1583T8****