



# ETA-USA

## HIGH QUALITY SWITCHING POWER SUPPLIES

AC/DC SWITCHING DESKTOP ADAPTOR  
POWER SUPPLY WITH PFC  
SINGLE OUTPUT / UNIVERSAL RANGE INPUT  
150 WATTS

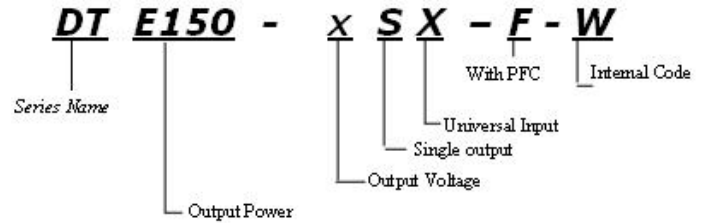
### DTE150-xSX-F-W Series



Dimension: L170×W85×H44mm



#### General Description



#### Features

1. High Reliability
2. 100% BURN-IN Tested
3. 100% Hi-Pot tested
4. Safety Approvals, EMC compliance
5. 40mm cooling fan
6. AC input: IEC 320-C14 Inlet
7. Two year warranty

Input	
Input Voltage Range:	90-264VAC
Frequency:	47-63Hz
Input Current (rms):	2.5A @ 90Vac; 1.25A @ 264Vac max.
Power Factor:	>0.9 (115VAC100%Load)
Efficiency :	>85% @ full load, 115VAC

Output Characteristic	Unit	DTE150-12SX-F-W	DTE150-16SX-F-W	DTE150-19SX-F-W	DTE150-24SX-F-W	DTE150-36SX-F-W	DTE150-48SX-F-W
		Output Voltage	Vdc	12	16	19	24
Output Current	A	12.5	9.38	7.9	6.25	4.17	3.13
Output Power	W	150					
O/P Regulation	%	±3%					
Ripple & Noise (Vp-p) *	mVp-p	+5% / -2%					
Hold-up time	mS	>16ms typical at full load @ 115VAC					

\* Peak-to-peak with 20MHz bandwidth with a tantalum 10uF in parallel with a 0.1uF ceramic capacitor.



ETA USA  
16170 Vineyard Blvd. Suite 180, Morgan Hill, CA 95037  
Phone: 1-800-ETA-POWR, (408) 778-2793 Fax: (408) 779-2753

Visit us at: [www.eta-usa.com](http://www.eta-usa.com)  
email at: [sales@eta-usa.com](mailto:sales@eta-usa.com)

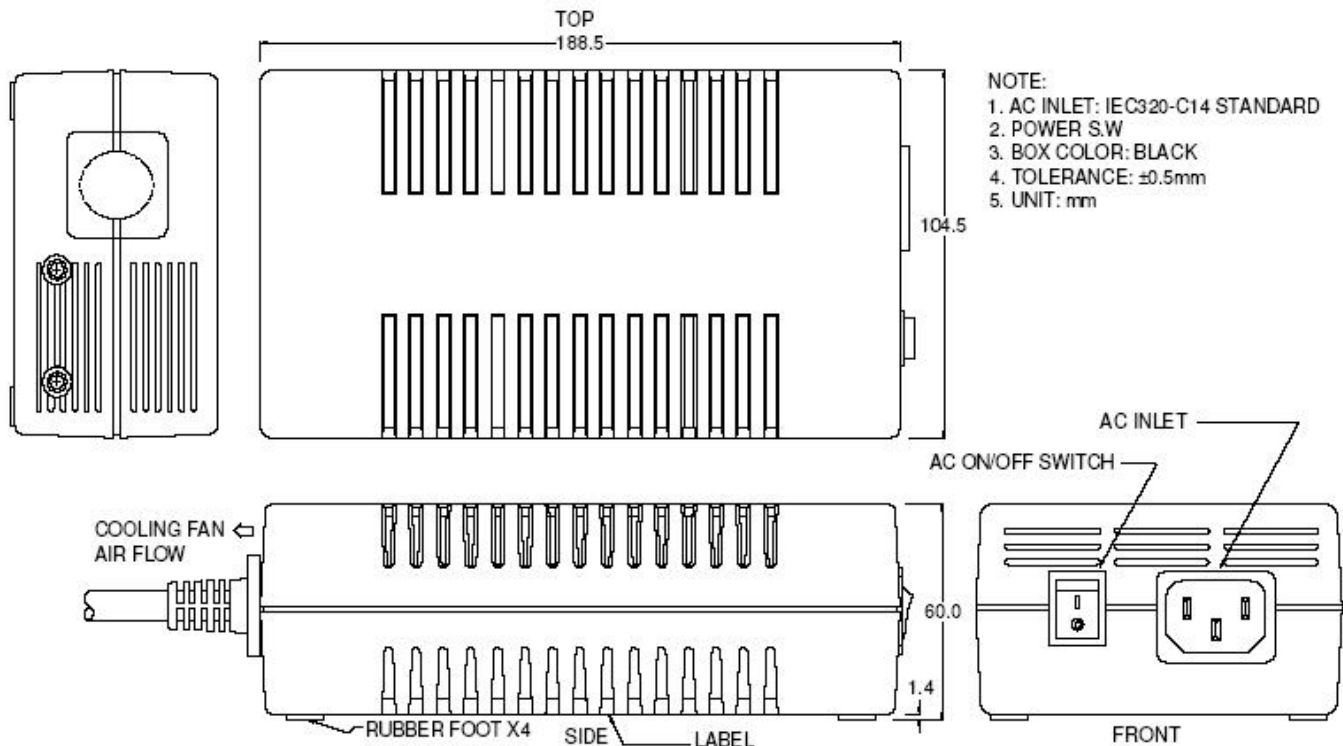


# ETA-USA

## HIGH QUALITY SWITCHING POWER SUPPLIES

Environmental Specification	
Operating Temperature	0 to +40°C
Storage Temperature	-10 to +85°C
MTBF demonstrated	>80'000 hours at full load and 25 °C ambient temperature
Environmental Agencies	
Safety Standards	UL 60950 -1 CSA 22.2-No.60950-1 TUV EN60950-1 CB IEC 60950-1
EMC Standards	CISPR 22 Class B, FCC Class B, EN55022 Class B, CE
Protection	
Short circuit protection	Auto Recover
Over Load Protection	Auto Recover
Over Voltage Protection	LATCH AC Recycle
Mechanical	
Dimension [mm]:	L188.5×W104.5×H60mm
AC Input :	IEC 320-C14

### DIMENSION DIAGRAM (mm)



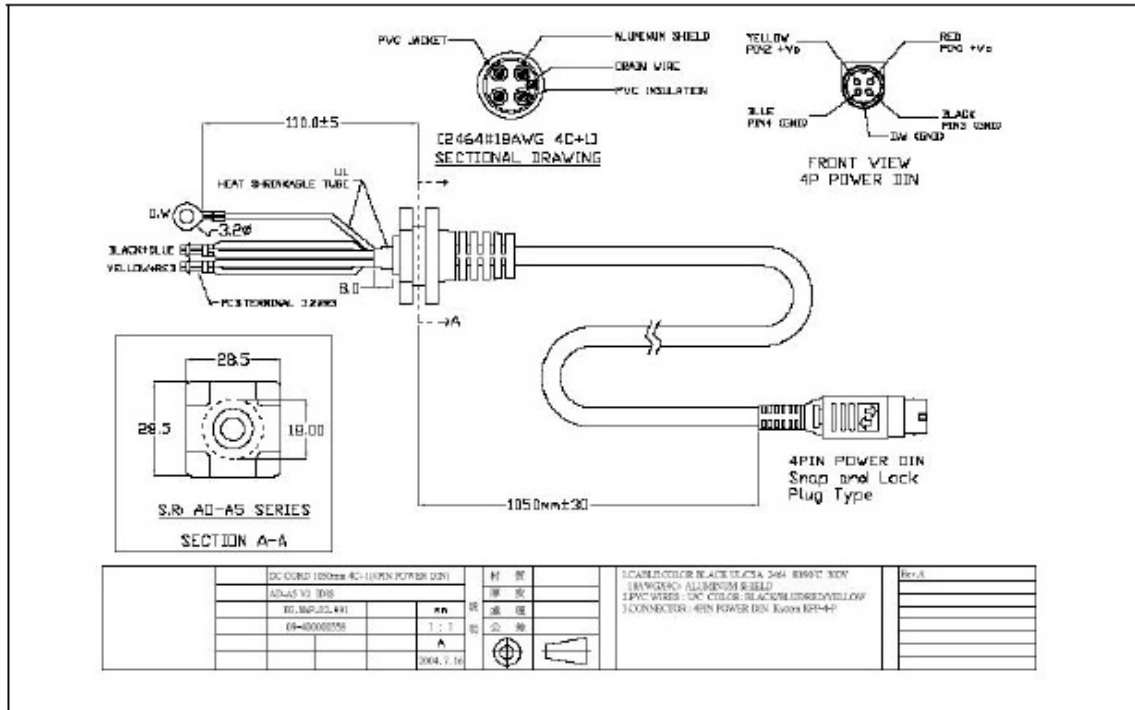
ETA USA  
16170 Vineyard Blvd. Suite 180, Morgan Hill, CA 95037  
Phone: 1-800-ETA-POWR, (408) 778-2793 Fax: (408) 779-2753

Visit us at: [www.eta-usa.com](http://www.eta-usa.com)  
email at: [sales@eta-usa.com](mailto:sales@eta-usa.com)



# ETA-USA

HIGH QUALITY SWITCHING POWER SUPPLIES



ETA USA  
16170 Vineyard Blvd, Suite 180, Morgan Hill, CA 95037  
Phone: 1-800-ETA-POWER, (408) 778-2793 Fax: (408) 779-2753

Visit us at: [www.eta-usa.com](http://www.eta-usa.com)  
email at: [sales@eta-usa.com](mailto:sales@eta-usa.com)



ETA USA  
16170 Vineyard Blvd, Suite 180, Morgan Hill, CA 95037  
Phone: 1-800-ETA-POWER, (408) 778-2793 Fax: (408) 779-2753

Visit us at: [www.eta-usa.com](http://www.eta-usa.com)  
email at: [sales@eta-usa.com](mailto:sales@eta-usa.com)