



ETA-USA

HIGH QUALITY SWITCHING POWER SUPPLIES

AC/DC SWITCHING DESKTOP ADAPTER
POWER SUPPLY WITH PFC
SINGLE OUTPUT / UNIVERSAL RANGE INPUT
150 WATTS
CEC IV

DTE150-xSX-F-W-C2 Series



Dimension: L170×W85×H44mm



General Description

Features

1. High Reliability
2. 100% BURN-IN Tested
3. 100% Hi-Pot tested
4. Safety Approvals, EMC compliance
5. AC input: IEC 320-C14 Inlet
6. Two year warranty
7. Meet CEC & Energy Star level IV requirements
8. Green functions+ No load power consumption <.5 W

Input

Input Voltage Range: 90-264VAC

Frequency: 47-63Hz

Input Current (rms): 2.5A @ 90Vac;
1.25A@ 264Vac max.

Power Factor: >0.9 (115VAC100%Load)

Efficiency : >85% @ full load,
115VAC

Output Characteristic	Unit	Models					
		DTE150-12SX-F-W-C2	DTE150-16SX-F-W-C2	DTE150-19SX-F-W-C2	DTE150-24SX-F-W-C2	DTE150-36SX-F-W-C2	DTE150-48SX-F-W-C2
Output Voltage	Vdc	12	16	19	24	36	48
Output Current	A	11.67	9.38	7.90	6.25	4.17	3.13
Power	W	150					
O/P Regulation		±5%/ -2%					
Ripple & Noise(max)*3	mVpp	240	320	380	480	480	480
Rise up time	mS	>20ms typical at full load @ 115VAC					

* Peak-to-peak with 20MHz bandwidth with a tantalum 10uF in parallel with a 0.1uF ceramic capacitor.



ETA USA
16170 Vineyard Blvd. Suite 180, Morgan Hill, CA 95037
Phone: 1-800-ETA-POWR, (408) 778-2793 Fax: (408) 779-2753

Visit us at: www.eta-usa.com
email at: sales@eta-usa.com



ETA-USA

HIGH QUALITY SWITCHING POWER SUPPLIES

Output Characteristic	Unit	Models					
		DTE150-13SX-F-W-C2	DTE150-14SX-F-W-C2	DTE150-15SX-F-W-C2	DTE150-17SX-F-W-C2	DTE150-18SX-F-W-C2	DTE150-20SX-F-W-C2
Output Voltage	Vdc	13	14	15	17	18	20
Power	W	150					
O/P Regulation		±5%/ -2%					
Rise up time	mS	>20ms typical at full load @ 115VAC					
* Peak-to-peak with 20MHz bandwidth with a tantalum 10uF in parallel with a 0.1uF ceramic capacitor.							

Output Characteristic	Unit	Models					
		DTE150-21SX-F-W-C2	DTE150-22SX-F-W-C2	DTE150-23SX-F-W-C2	DTE150-25SX-F-W-C2	DTE150-26SX-F-W-C2	DTE150-33SX-F-W-C2
Output Voltage	Vdc	21	22	23	25	26	33
Power	W	150					
O/P Regulation		±5%/ -2%					
Ripple & Noise(max)*3	mVpp	240	320	380	480	480	480
Rise up time	mS	>20ms typical at full load @ 115VAC					
* Peak-to-peak with 20MHz bandwidth with a tantalum 10uF in parallel with a 0.1uF ceramic capacitor.							

Output Characteristic	Unit	Models					
		DTE150-34SX-F-W-C2	DTE150-35SX-F-W-C2	DTE150-37SX-F-W-C2	DTE150-38SX-F-W-C2	DTE150-39SX-F-W-C2	DTE150-44SX-F-W-C2
Output Voltage	Vdc	34	35	37	38	39	44
Power	W	150					
O/P Regulation		±5%/ -2%					
Rise up time	mS	>20ms typical at full load @ 115VAC					
* Peak-to-peak with 20MHz bandwidth with a tantalum 10uF in parallel with a 0.1uF ceramic capacitor.							

Output Characteristic	Unit	Models			
		DTE150-45SX-F-W-C2	DTE150-46SX-F-W-C2	DTE150-47SX-F-W-C2	DTE150-49SX-F-W-C2
Output Voltage	Vdc	45	46	47	49
Power	W	150			
O/P Regulation		±5%/ -2%			
Rise up time	mS	>20ms typical at full load @ 115VAC			
* Peak-to-peak with 20MHz bandwidth with a tantalum 10uF in parallel with a 0.1uF ceramic capacitor.					



ETA USA
 16170 Vineyard Blvd. Suite 180, Morgan Hill, CA 95037
 Phone: 1-800-ETA-POWR, (408) 778-2793 Fax: (408) 779-2753

Visit us at: www.eta-usa.com
 email at: sales@eta-usa.com



ETA-USA

HIGH QUALITY SWITCHING POWER SUPPLIES

Environmental Specification	
Operating Temperature	0 to +40°C
Storage Temperature	-10 to +85°C
MTBF demonstrated	>80,000 hours at full load and 25 °C ambient temperature
Humidity	20%~90%
Environmental Agencies	
Safety Standards	CSA 22.2-No.60950-1 TUV EN60950-1 CB IEC 60950-1
EMC Standards	CISPR 22 Class B, FCC Class B, EN55022 Class B, CE
Protection	
Short circuit protection	Auto Recover
Over Load Protection	Auto Recover
Over Voltage Protection	LATCH AC Recycle
Mechanical	
Dimension [mm]: L170×W85×H44mm	
AC Input : IEC 320-C14	



ETA USA

16170 Vineyard Blvd. Suite 180, Morgan Hill, CA 95037
Phone: 1-800-ETA-POWR, (408) 778-2793 Fax: (408) 779-2753

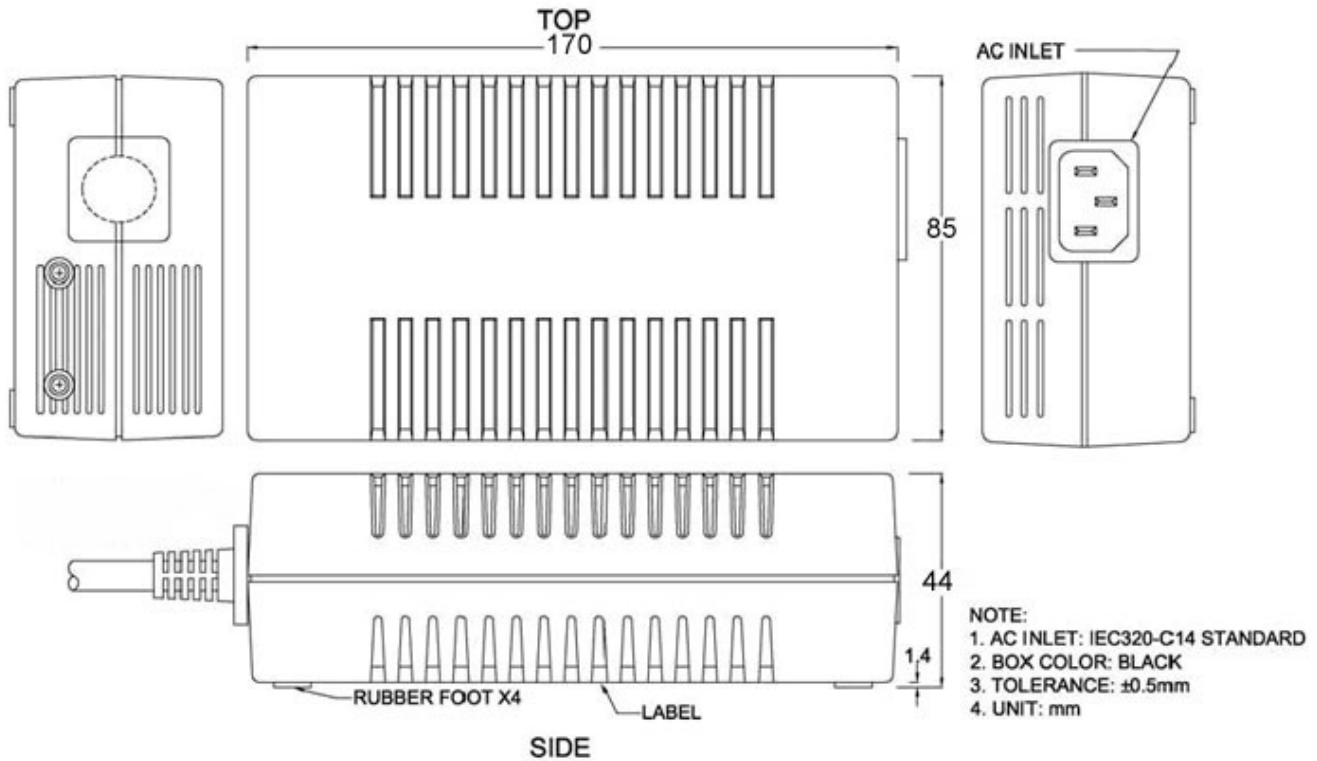
Visit us at: www.eta-usa.com
email at: sales@eta-usa.com



ETA-USA

HIGH QUALITY SWITCHING POWER SUPPLIES

DIMENSION DIAGRAM (mm)



ETA USA

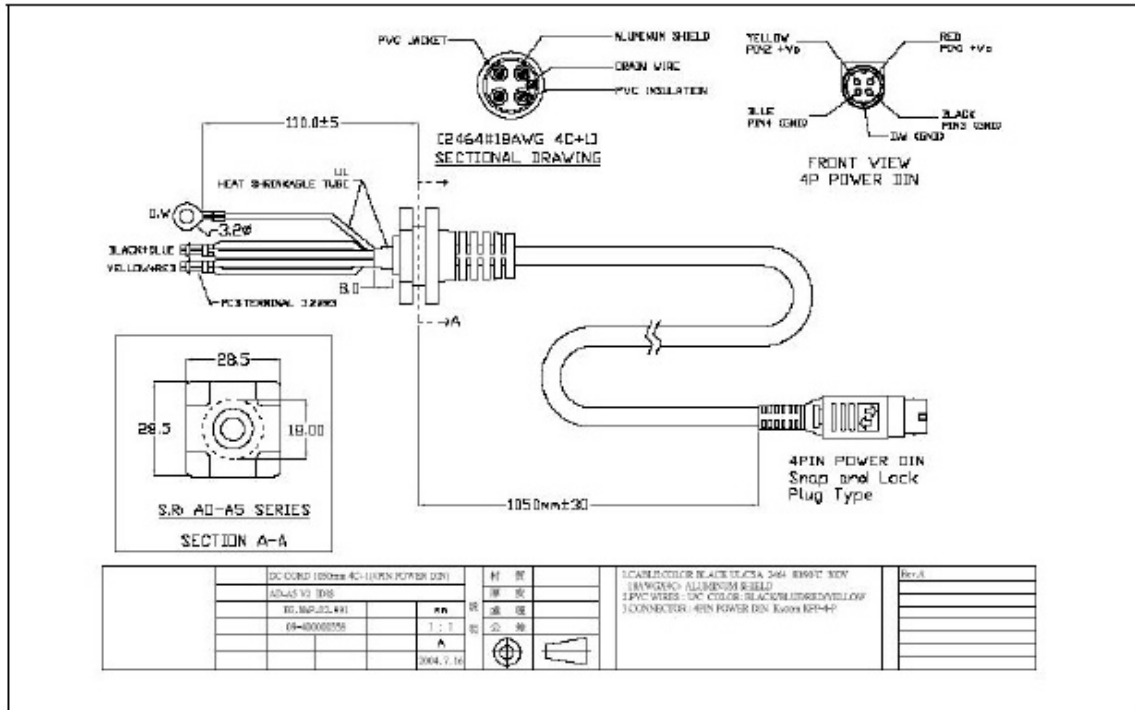
16170 Vineyard Blvd. Suite 180, Morgan Hill, CA 95037
Phone: 1-800-ETA-POWR, (408) 778-2793 Fax: (408) 779-2753

Visit us at: www.eta-usa.com
email at: sales@eta-usa.com



ETA-USA

HIGH QUALITY SWITCHING POWER SUPPLIES



DC COND 1000vac AC (OPEN POWER DIN)	材料	1 CABLE/COLOR BLACK ULCSA 364 8000V 300V	Rev.:
ULCSA V3 3DB	規格	18 AWG/20 ALUMINUM SHIELD	
UL 3P/2L 4W	用途	1 PVC WIRE: DC COLOR BLACK/RED/YELLOW	
05-0000276	公差	1 CONNECTOR: 4PIN POWER DIN Eaton EP4-4P	
	単位		
	図面		
	承認		
	2004.7.16		

ETA USA
 16170 Vineyard Blvd, Suite 180, Morgan Hill, CA 95037
 Phone: 1-800-ETA-POWER, (408) 778-2793 Fax: (408) 779-2753

Visit us at: www.eta-usa.com
 email at: sales@eta-usa.com



ETA USA
 16170 Vineyard Blvd, Suite 180, Morgan Hill, CA 95037
 Phone: 1-800-ETA-POWER, (408) 778-2793 Fax: (408) 779-2753

Visit us at: www.eta-usa.com
 email at: sales@eta-usa.com