



TR10R SERIES

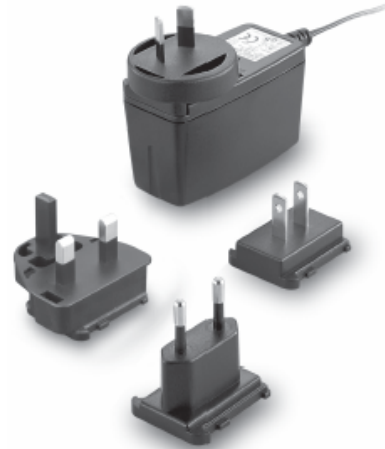
10W SWITCHING ADAPTER



* Not CE certified for the EU"

Features

- * Universal Input: 90-264Vac
- * Interchangeable AC Plugs
- * EMI Meets EN55022 Class "B" and CISPR/FCC Class B, Conducted
- * Continuous Short Circuit Protection



Ordering information

TR10RXXX - XX X XX
 Model No. DC Plug Type A: Without OVP DC Cable Length and Type
 * Please see Page 213 for Option
 more detailed descriptions
 01: 720mm
 02: 1200mm
 03: 1800mm
 11: 7200mm with Ferrite Core
 12: 1200mm with Ferrite Core
 13: 1800mm with Ferrite Core

MODEL	OUTPUT VOLTAGE	MAX. LOAD	MIN. LOAD	RIPPLE & NOISE	VOLTAGE ACCURACY	LINE REGULATION	LOAD REGULATION	(%) EFF. (Typ.)
TR10R033	3.3V	1600mA	0A	50mV	±3%	±1%	±4%	60%
TR10R050	5V	1600mA	0A	50mV	±2%	±1%	±4%	65%
TR10R060	6V	1500mA	0A	1%	±2%	±1%	±3%	68%
TR10R075	7.5V	1200mA	0A	1%	±2%	±1%	±3%	68%
TR10R090	9V	1100mA	0A	1%	±2%	±1%	±2%	73%
TR10R120	12V	850mA	0A	1%	±2%	±1%	±2%	73%
TR10R136	13.6V	750mA	0A	1%	±2%	±1%	±2%	76%
TR10R150	15V	700mA	0A	1%	±2%	±1%	±2%	75%
TR10R180	18V	550mA	0A	1%	±2%	±1%	±2%	76%
TR10R240	24V	400mA	0A	1%	±2%	±1%	±2%	76%

Specifications

INPUT SPECIFICATIONS:

Voltage	90~264Vac
Frequency	47 to 63Hz
Input Current	0.4A max.
Inrush Current	40A max. @240Vac
Conducted EMI	CISPR/FCC Class B
Leakage Current	0.25mA max.

OUTPUT SPECIFICATIONS:

Holdup Time	10ms typ. @115Vac
Short Circuit Protection	Continuous(Auto Recovery)
Over Current Protection	Constant Current type
Temperature Coefficient	±0.05%/°C

GENERAL SPECIFICATIONS:

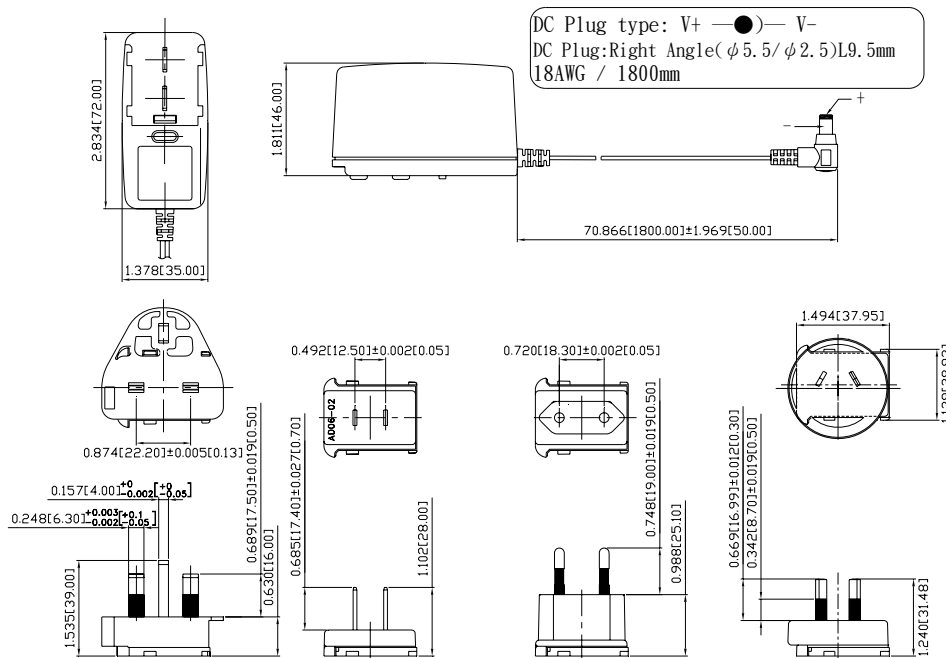
Isolation	Input to output = 4,242VDC
Operating Temperature	0 ~ 60°C (see derating curve)
Storage Temperature	-20~85°C
Humidity	93% RH max. Non condensing
Cooling	Natural Convection
Switching Frequency	40KHz Typical
MTBF	MIL-HDBK-217F, GB, 25°C/115VAC 200K hrs min.
Altitude	2000m
Dimensions	2.835x1.811x1.378Inches (72.00x46.00x35.00mm)
Weight	155g(0.34 Pounds)

SAFETY AND EMC:

Emission and Immunity	EN55022 Class B, FCC Part 15 Class B EN61000-6-3, EN61000-3-2, EN61000-3-3 EN55024, EN61204-3, EN61000-6-1
Safety	IEC60950-1, EN60950-1, UL60950-1

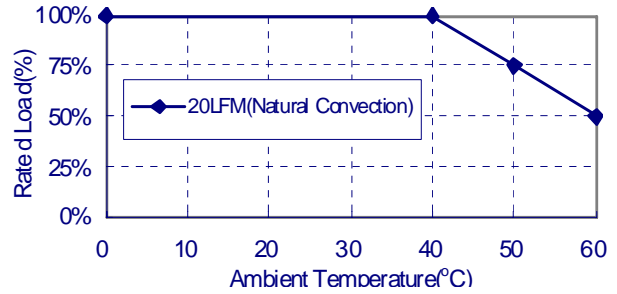
Mechanical Specification

All Dimensions are in inches(mm)
Tolerance: Inches: X.XXX±0.02
Millimeters: X.XX±0.5



Typical at 25°C, nominal line and 75% load, unless otherwise Specified

TR10R Series Derating Curve



NOTE:

1. Voltage setpoint at 60% full load
2. Add a 0.1uF ceramic capacitor and a 10uF E.L. capacitor to output for Ripple & Noise measuring @20MHz BW.
3. Line regulation is measured from 100Vac to 240Vac with full load.
4. Load regulation is measured from 60% to full load and from 60% to 20% load (60% +/- 40% load)