



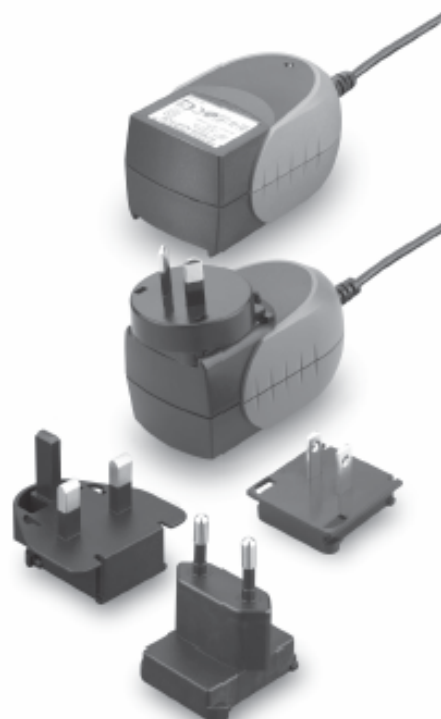
TR15RAM SERIES

15W SWITCHING ADAPTER



Features

- * Universal Input Range 90-264VAC
 - * Meets EN60601-1 and EN55011 Class "B"
 - * Continuous Short Circuit Protection
 - * Interchangeable AC Plugs
 - * Over Voltage Protection
 - * Energy Star 2.0, Level V
- (Output Cable Length \leq 1800mm)
 (TR15RAM050: Output Cable Length \leq 1500mm)



Ordering information

TR15RAMXXX - XX	E XX	-	XX	-BK
Model No.	DC Plug Type	DC Cable Length and Type	Color of Overmold Case	
	* Please see Page 213 for more detailed descriptions	01: 720mm	BE: Blue	
		02: 1200mm	GY: Gray	
		03: 1800mm	RD: Red	
		11: 720mm with Ferrite Core	PE: Purple	
		12: 1200mm with Ferrite Core	OR: Orange	
		13: 1800mm with Ferrite Core		
		* 20AWG / UL2468		

MODEL	OUTPUT VOLTAGE	MAX. LOAD	MIN. LOAD	RIPPLE & NOISE	VOLTAGE ACCURACY	LINE REGULATION	LOAD REGULATION	SWITCHING FREQUENCY	%EFF.
TR15RAM050	5V	2.0A	0A	1%	\pm 3%	\pm 1%	\pm 4%	95KHz Typ.	73% Typ.
TR15RAM120	12V	1.1A	0A	1%	\pm 2%	\pm 1%	\pm 2%	95KHz Typ.	83% Typ.
TR15RAM150	15V	1.0A	0A	1%	\pm 2%	\pm 1%	\pm 2%	95KHz Typ.	82% Typ.
TR15RAM240	24V	625mA	0A	1%	\pm 2%	\pm 1%	\pm 2%	95KHz Typ.	82% Typ.

Specifications

INPUT SPECIFICATIONS:

Voltage	90~264Vac
Frequency	47 to 63Hz
Input Current	0.4A max.
Inrush Current	50A max. @ 240Vac
Leakage Current	0.1mA max.

OUTPUT SPECIFICATIONS:

Hold-up Time	10ms typ. @115Vac
Temperature Coefficient	$\pm 0.05\%/^{\circ}\text{C}$
Short Circuit Protection	Continuous(Auto Recovery)
Over Voltage Protection	TVS Clamp
Over Current Protection	Auto Recovery

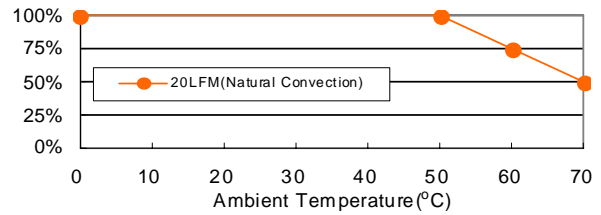
GENERAL CHARACTERISTICS:

Operating Temperature	-20 - 50°C
Storage Temperature	-20 - 85°C
Cooling	Natural Convection
Isolation	Input to output = 5,656VDC
Humidity.....	93% RH max. Non condensing
Dimensions	3.173x1.885x1.704Inches (80.60x47.90x43.30mm)
Weight	130g(0.29 Pounds)

SAFETY & EMISSION:

UL60601-1, IEC/EN60601-1, EN60601-1-2, EN55011 Class B

TR15RAM Series Derating Curve



NOTE:

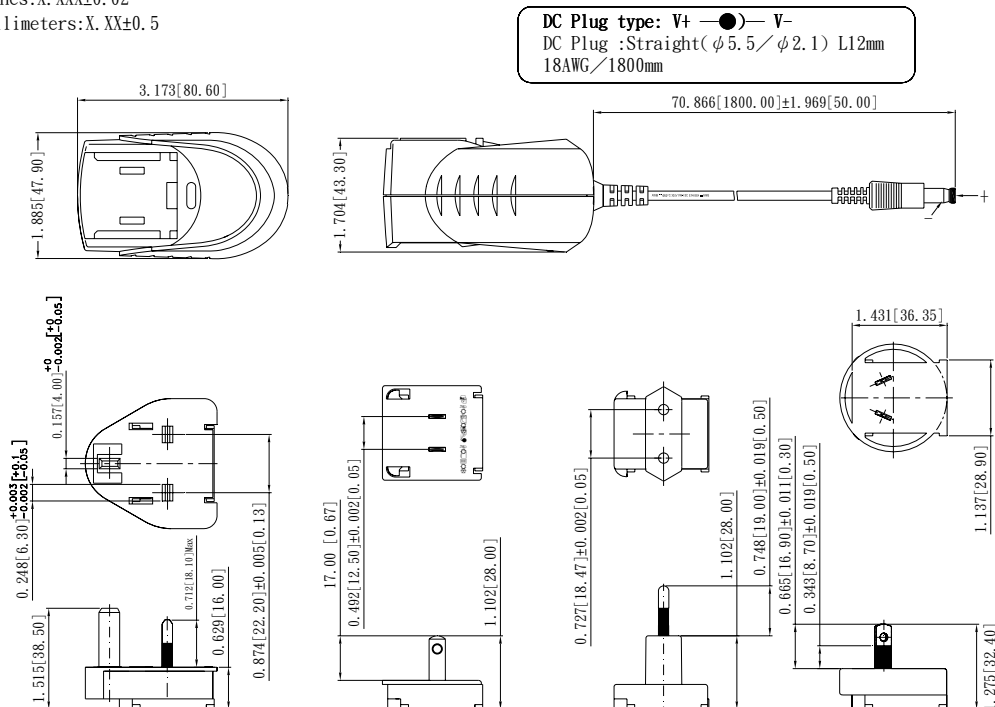
1. Voltage setpoint at 60% full load
2. Add a 0.1uF ceramic capacitor and a 10uF E.L. capacitor to output for Ripple & Noise measuring @20MHz BW.
3. Line regulation measured from 100Vac to 240Vac, full load.
4. Load regulation measured from 60% to full load and from 60% to 20% load (60% +/- 40% load)

Mechanical Specification

All Dimensions are in inches(mm)

Tolerance:Inches:X.XXX±0.02

Millimeters:X.XX±0.5



Typical at 25°C, nominal line and 75% load, unless otherwise Specified