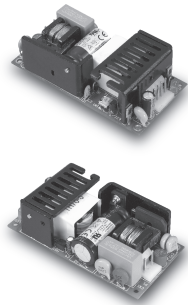


# CFM40/60

S E R I E S

## 40/60 WATT OPEN FRAME AC-DC MODULES



### Features

- Universal Input Range 90-264VAC
- Efficiency to 87%
- 2" x 4" Size
- Meets EN55022 Class B and CISPR/FCC Class B, Conducted
- Industry Standard Pin Out
- Continuous Short Circuit Protection

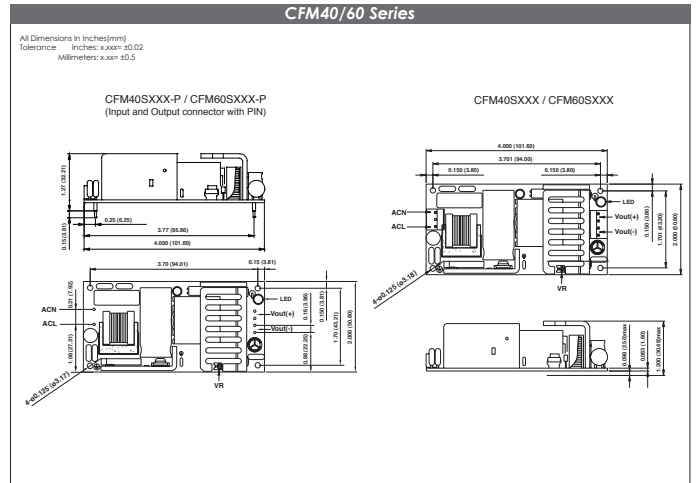
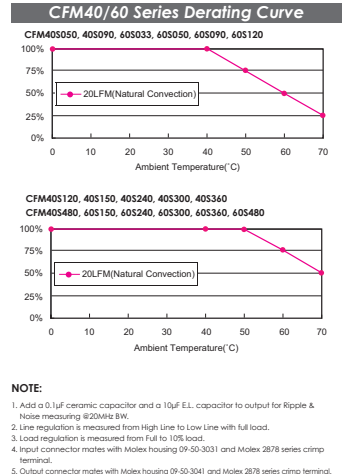
### CFM40 Series

MODEL	OUTPUT VOLTAGE	MAX. LOAD	MIN. LOAD	RIPPLE & NOISE	VOLTAGE ACCURACY	LINE REGULATION	LOAD REGULATION	%EFF
CFM40S033	3.3 V	6A	0A	50mV	± 1%	± 0.5%	± 1%	70% Typ.
CFM40S050	5 V	6A	0A	1%	± 1%	± 0.5%	± 1%	74% Typ.
CFM40S090	9 V	4.45A	0A	1%	± 1%	± 0.5%	± 1%	84% Typ.
CFM40S120	12 V	3.34A	0A	1%	± 1%	± 0.5%	± 1%	85% Typ.
CFM40S150	15 V	2.67A	0A	1%	± 1%	± 0.5%	± 1%	85% Typ.
CFM40S240	24 V	1.67A	0A	1%	± 1%	± 0.5%	± 1%	85% Typ.
CFM40S300	30 V	1.33A	0A	1%	± 1%	± 0.5%	± 1%	86% Typ.
CFM40S360	36 V	1.11A	0A	1%	± 1%	± 0.5%	± 1%	87% Typ.
CFM40S480	48 V	0.834A	0A	1%	± 1%	± 0.5%	± 1%	87% Typ.

### CFM60 Series

MODEL	OUTPUT VOLTAGE	MAX. LOAD	MIN. LOAD	RIPPLE & NOISE	VOLTAGE ACCURACY	LINE REGULATION	LOAD REGULATION	%EFF
CFM60S033	3.3 V	8A	0A	50mV	± 1%	± 0.5%	± 1%	72% Typ.
CFM60S050	5 V	8A	0A	1%	± 1%	± 0.5%	± 1%	77% Typ.
CFM60S090	9 V	6.67A	0A	1%	± 1%	± 0.5%	± 1%	84% Typ.
CFM60S120	12 V	5A	0A	1%	± 1%	± 0.5%	± 1%	85% Typ.
CFM60S150	15 V	4A	0A	1%	± 1%	± 0.5%	± 1%	86% Typ.
CFM60S240	24 V	2.5A	0A	1%	± 1%	± 0.5%	± 1%	86% Typ.
CFM60S300	30 V	2A	0A	1%	± 1%	± 0.5%	± 1%	86% Typ.
CFM60S360	36 V	1.67A	0A	1%	± 1%	± 0.5%	± 1%	88% Typ.
CFM60S480	48 V	1.25A	0A	1%	± 1%	± 0.5%	± 1%	88% Typ.

Specifications	
<b>INPUT SPECIFICATIONS:</b>	
Voltage	90 - 264Vac
Frequency	47 to 63Hz
Inrush Current	50A max. @ 240Vac
Conducted EMI	CISPR/FCC Class B
Isolation	Input to output ~4,242VDC
Leakage Current	~3.5mA max
<b>OUTPUT SPECIFICATIONS:</b>	
Holdup Time	8ms typ. @ 115Vac
Short Circuit Protection	Continuous
Temperature Coefficient	±0.05% / °C
<b>ENVIRONMENTAL CHARACTERISTICS:</b>	
Operating Temperature	0°C - 50°C
Storage Temperature	-20°C - 85°C
Cooling	Natural Convection
<b>MECHANICAL CHARACTERISTICS:</b>	
Dimensions	101.60 x 50.80 x 30.48mm (4.000 x 2.000 x 1.200inches)
Weight	CFM40: 170g (0.38 Pounds) CFM60: 175g (0.39 Pounds)



Typical at 25°C, nominal line and 75% load, unless otherwise specified