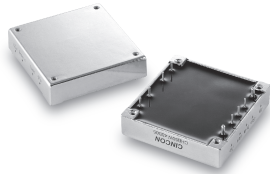


CHB50W

S E R I E S

25-50 WATT 4:1 INPUT RANGE DC-DC CONVERTERS



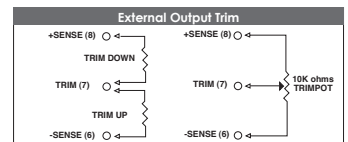
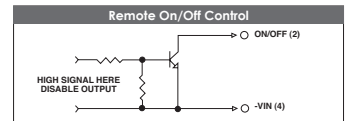
Features

- 25-50W Isolated Output
- Efficiency to 84%
- Half Brick Package
- 300KHz Switching Frequency
- 4 : 1 Input Range
- Five-Sided Shield Metal Case
- Regulated Outputs
- Continuous Short Circuit Protection

MODEL NUMBER	INPUT VOLTAGE	OUTPUT VOLTAGE	OUTPUT CURRENT	INPUT CURRENT		% EFF.	SIZE
				NO LOAD	FULL LOAD		
CHB50W-24533	9-36 VDC	3.3 VDC	10 A	50 mA	1785 mA	77	Half-Brick
CHB50W-24505		5 VDC	10 A		2570 mA	81	
CHB50W-24512		12 VDC	4.16 A		2510 mA	83	
CHB50W-24515		15 VDC	3.33 A		2510 mA	83	
CHB50W-24524	24 VDC	2.08 A		2510 mA	83		
CHB50W-48533	18-75 VDC	3.3 VDC	10 A	50 mA	880 mA	78	Half-Brick
CHB50W-48505		5 VDC	10 A		1270 mA	82	
CHB50W-48512		12 VDC	4.16 A		1240 mA	84	
CHB50W-48515		15 VDC	3.33 A		1240 mA	84	
CHB50W-48524	24 VDC	2.08 A		1240 mA	84		

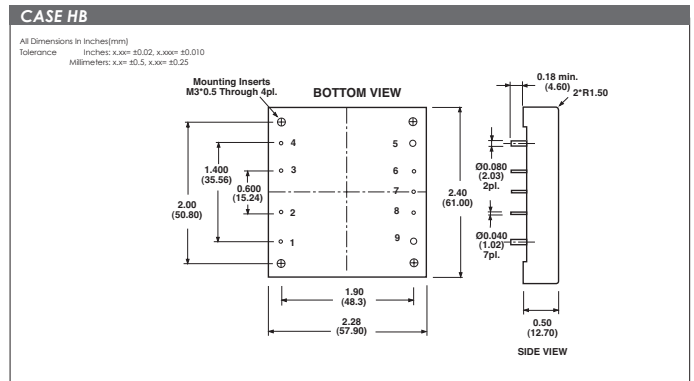
NOTE: 1. Nominal Input Voltage 24 or 48 VDC

Specifications	
INPUT SPECIFICATIONS:	
Input Voltage Range	24V.....9-36V 48V.....18-75V
Undervoltage lockout	24Vin power up.....8.8V power down.....8V 48Vin power up.....17V power down.....16V
Positive Logic Remote ON/OFF ¹PI Type
Input FilterPI Type
OUTPUT SPECIFICATIONS:	
Voltage Accuracy±1% max.
Transient Response :25% Step Load Change<500µ sec.
External Trim Adj. Range±10%
Ripple & Noise, 20MHz BW, 3.3V & 5V40mV RMS, max.100mV pk-pk, max.
12V & 15V60mV RMS, max.150mV pk-pk, max.
24V100mV RMS, max.240mV pk-pk, max.
Temperature Coefficient±0.03%/°C
Short Circuit ProtectionContinuous
Line Regulation±0.2% max.
Load Regulation ²±0.2% max.
Over Voltage Protection Trip Range, % Vo nom.115-140%
Current Limit110% -160% Nominal Output
GENERAL SPECIFICATIONS:	
EfficiencySee Table
Isolation VoltageInput/Output.....1500VDC min.Input/Case.....1500VDC min.Output/Case.....1500VDC min.
Isolation Resistance10 ohm min.
Switching Frequency300kHz Typ.
Operating Case Temperature-40°C to +100°C
Storage Temperature-55°C to +105°C
Thermal Shutdown, Case Temp.100°C Typ.
Dimensions2.28x2.40x0.50 inches[57.9x61.0x12.7 mm]
Case MaterialAluminum
Weight94g



PIN CONNECTION	
Pin	Function
1	+V Input
2	ON/OFF
3	CASE
4	-V Input
5	-V Output
6	-Sense
7	Trim
8	+Sense
9	+Vout

- NOTE:**
1. Measured From High Line to Low Line.
 2. Measured From Full Load to Zero Load.
 3. Logic Compatibility Open Collector ref. to Input.
Module ON Open Circuit
Module OFF -0.8Vdc
 4. Suffix "N" to the Model Number with Negative Logic Remote ON/OFF.



All Specifications Typical At Nominal Line, Full Load and 25°C Unless Otherwise Noted.