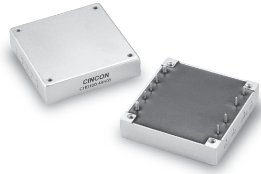


CHB100

S E R I E S

50-100 WATT 1/2 BRICK DC-DC CONVERTERS



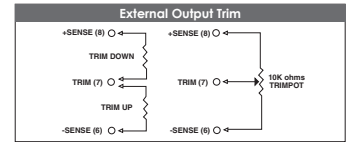
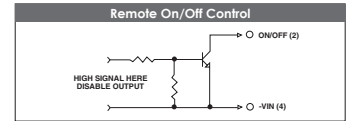
Features

- 50-100W Isolated Output
- Half Brick Package
- Regulated Outputs
- Efficiency to 85%
- 500KHz Switching Frequency
- Five-Sided Shield Metal Case
- Continuous Short Circuit Protection

MODEL NUMBER	INPUT VOLTAGE	OUTPUT VOLTAGE	OUTPUT CURRENT	INPUT CURRENT		% EFF.	SIZE
				NO LOAD	FULL LOAD		
CHB100-24S25	18-36 VDC	2.5 VDC	20A	50 mA	2705 mA	77	Half-Brick
CHB100-24S33		3.3 VDC	20A		3480 mA	79	
CHB100-24S05		5 VDC	20A		5020 mA	83	
CHB100-24S12		12 VDC	8.3A		4880 mA	85	
CHB100-24S15		15 VDC	6.7A		4925 mA	85	
CHB100-24S24	24 VDC	4.17A	4905 mA	85			
CHB100-48S25	36-75 VDC	2.5 VDC	20A	50 mA	1335 mA	78	Half-Brick
CHB100-48S33		3.3 VDC	20A		1720 mA	80	
CHB100-48S05		5 VDC	20A		2480 mA	84	
CHB100-48S12		12 VDC	8.3A		2442 mA	85	
CHB100-48S15		15 VDC	6.7A		2463 mA	85	
CHB100-48S24	24 VDC	4.17A	2463 mA	85			

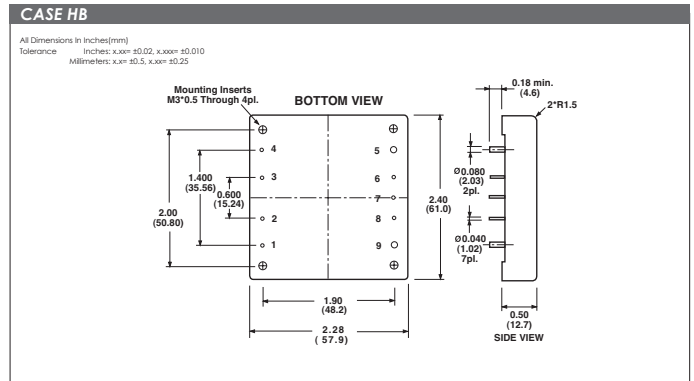
NOTE: 1. Nominal Input Voltage 24 or 48 VDC

Specifications	
INPUT SPECIFICATIONS:	
Input Voltage Range	24V.....18-36V 48V.....36-75V
Undervoltage lockout	24Vin power up.....17V power down.....16V 48Vin power up.....34V power down.....32.5V
Positive Logic Remote ON/OFF ¹	PI Type
Input Filter	PI Type
OUTPUT SPECIFICATIONS:	
Voltage Accuracy	±1% max.
Transient Response (25% Step Load Change)	<500µ sec.
External Trim Adj. Range	±1.0%
Ripple & Noise, 20MHz BW, 2.5V & 3.3V & 5V	40mV RMS, max. 100mV pk-pk, max.
12V & 15V	60mV RMS, max. 150mV pk-pk, max.
24V	100mV RMS, max. 240mV pk-pk, max.
Temperature Coefficient	±0.03%/°C
Short Circuit Protection	Continuous
Line Regulation	±0.2% max.
Load Regulation ²	±0.2% max.
Over Voltage Protection Trip Range, % Vo nom.	115-140%
Current Limit	110% -140% Nominal Output
GENERAL SPECIFICATIONS:	
Efficiency	See Table
Isolation Voltage	Input/Output.....1500VDC min. Input/Case.....1500VDC min. Output/Case.....1500VDC min.
Isolation Resistance	10 ⁹ ohm min.
Switching Frequency	500KHz, Typ.
Operating Case Temperature	-40°C to 100°C
Storage Temperature	-40°C to +105°C
Thermal Shutdown, Case Temp.	100°C Typ.
Dimensions	2.28x2.40x0.50 inches (57.9x61.0x12.7 mm)
Case Material	Aluminum
Weight	95g



PIN CONNECTION	
Pin	Function
1	+V Input
2	ON/OFF
3	CASE
4	-V Input
5	-V Output
6	-Sense
7	Trim
8	+Sense
9	+Vout

- NOTE:**
1. Measured From High Line to Low Line.
 2. Measured From Full Load to Zero Load.
 3. Logic Compatibility: Open Collector ref. to input.
Module ON: Open Circuit
Module OFF: <0.8Vdc
 4. Suffix "N" to the Model Number with Negative Logic Remote ON/OFF.



All Specifications Typical At Nominal Line, Full Load and 25°C Unless Otherwise Noted.