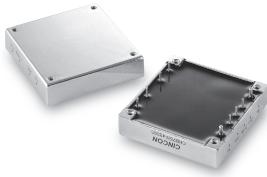


CHB75W

S E R I E S

37.5-75 WATT 4:1 INPUT RANGE DC-DC CONVERTERS



Features

- 37.5-75W Isolated Output
- Half Brick Package
- 4 : 1 Input Range
- Regulated Outputs
- Efficiency to 85%
- 300KHz Switching Frequency
- Five-Sided Shield Metal Case
- Continuous Short Circuit Protection

MODEL NUMBER	INPUT VOLTAGE	OUTPUT VOLTAGE	OUTPUT CURRENT		INPUT CURRENT		% EFF.	SIZE
			MIN.	MAX.	NO LOAD	FULL LOAD		
CHB75W-24S33	9-36 VDC	3.3 VDC	0mA	15 A	50 mA	2611 mA	79	Half-Brick
CHB75W-24S05		5 VDC		15 A		3811 mA	82	
CHB75W-24S12		12 VDC		6.25A		3765 mA	83	
CHB75W-24S15		15 VDC		5 A		3720 mA	84	
CHB75W-24S24	24 VDC	3.12 A		3720 mA	84			
CHB75W-48S33	18-75 VDC	3.3 VDC	0mA	15 A	50 mA	1289 mA	80	Half-Brick
CHB75W-48S05		5 VDC		15 A		1883 mA	83	
CHB75W-48S12		12 VDC		6.25 A		1860 mA	84	
CHB75W-48S15		15 VDC		5 A		1838 mA	85	
CHB75W-48S24	24 VDC	3.12 A		1835 mA	85			

NOTE: 1. Nominal Input Voltage 24 or 48 VDC

Specifications

INPUT SPECIFICATIONS:

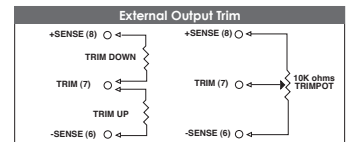
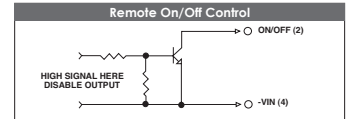
Input Voltage Range: 24V.....9.34V
48V.....18.75V
Undervoltage lockout: 24Vin power up.....8.8V
power down.....8V
48Vin power up.....17V
power down.....14V
Positive Logic Remote ON/OFF*
Input Filter.....PI Type

OUTPUT SPECIFICATIONS:

Voltage Accuracy:.....±1% max.
Transient Response (25% Step Load Change):.....<500µ sec.
External Trim Adj. Range:.....±1.0%
Ripple & Noise, 20MHz BW, 3.3V & 5V:.....40mV RMS, max.
100mV pk-pk, max.
12V & 15V:.....60mV RMS, max.
150mV pk-pk, max.
24V:.....100mV RMS, max.
240mV pk-pk, max.
Temperature Coefficient:.....±0.03%/°C
Short Circuit Protection:.....Continuous
Line Regulation:.....±0.2% max.
Load Regulation:.....±0.2% max.
Over Voltage Protection trip Range, % Vo nom:.....115-140%
Current Limit:.....110% - 160% Nominal Output

GENERAL SPECIFICATIONS:

Efficiency:.....See Table
Isolation Voltage:.....Input/Output:.....1500VDC min.
Input/Case:.....1500VDC min.
Output/Case:.....1500VDC min.
Isolation Resistance:.....10⁹ ohm min.
Switching Frequency:.....300KHz Typ.
Operating Case Temperature:.....-40°C to 100°C
Storage Temperature:.....-55°C to +105°C
Thermal Shutdown, Case Temp.:.....100°C Typ.
Dimensions:.....2.28x2.40x0.50 inches
(57.9x61.0x12.7 mm)
Case Material:.....Aluminum
Weight:......94g

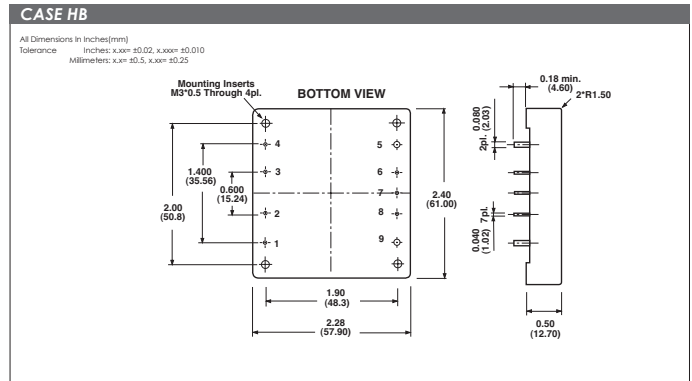


PIN CONNECTION

Pin	Function
1	+Vin
2	ON/OFF
3	CASE
4	-Vin
5	-Vout
6	-Sense
7	Trim
8	+Sense
9	+Vout

NOTE:

1. Measured From High Line to Low Line.
2. Measured From Full Load to Zero Load.
3. Logic Compatibility: Open Collector ref. to input.
Module ON: Open Circuit
Module OFF: Open Circuit
4. Suffix 'Y' to the Model Number with Negative Logic Remote ON/OFF.
Module ON: -0.8Vdc
Module OFF: Open Circuit



All Specifications Typical At Nominal Line, Full Load and 25°C Unless Otherwise Noted.