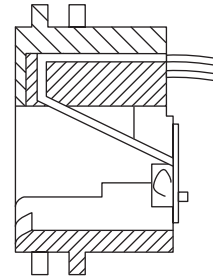
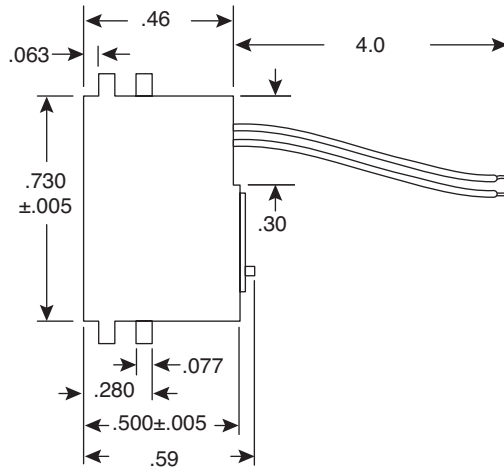
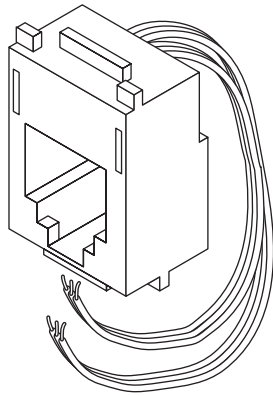


Modular Jacks

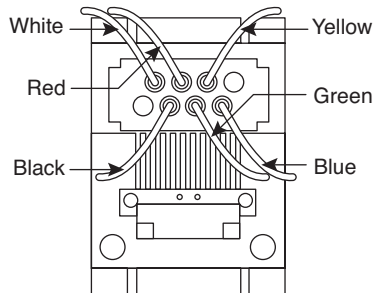
154-7652A4, 154-7652A6



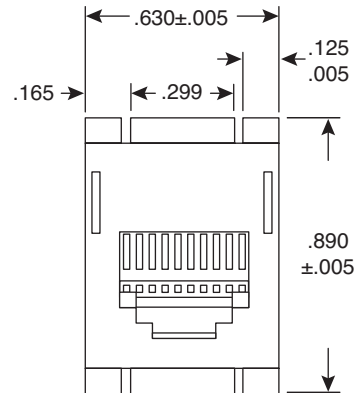
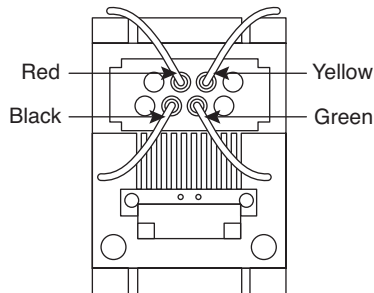
Modular Jacks



154-7652A6



154-7652A4



Dimensions: In.

SPECIFICATIONS	
Wire Leads:	Phosphor Bronze Alloy, 1.77"
Housing:	ABS Molding Compound
Color:	Gray
Contacts:	6 Micron Gold Plated

MOUSER STOCK NO.	Positions/ Contacts	USOC Type	Western Electric Type
154-7652A4	6P/4C	RJ11	652A4
154-7652A6	6P/6C	RJ11	652A6

Date Last Revised: 10-15-05

Available from Mouser Electronics
1-800-346-6873
www.mouser.com

KC-300615

154-7652A4, 154-7652A6