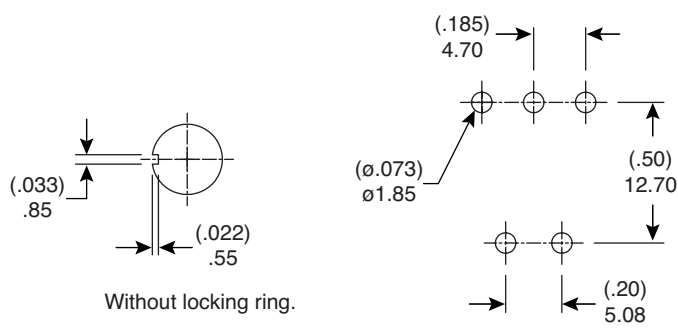
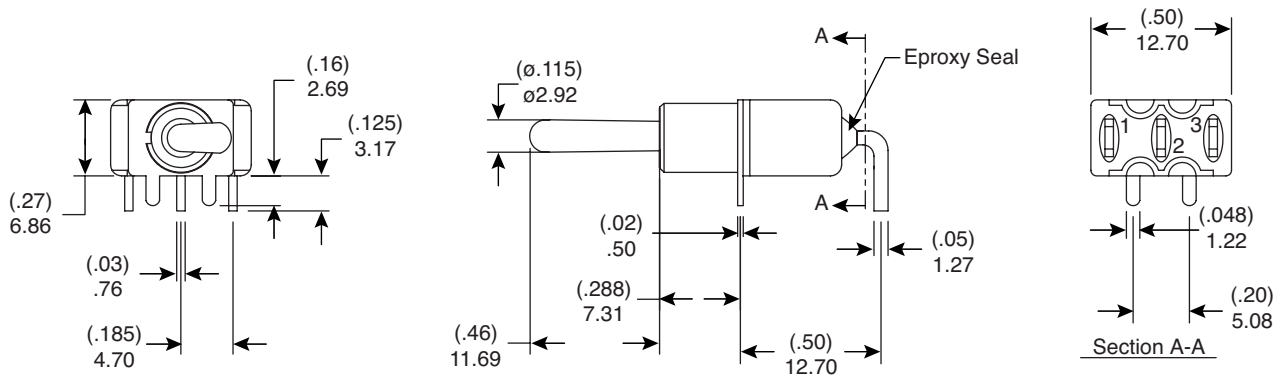
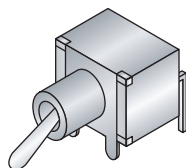


Dimensions: mm (In.)



Panel Mounting

P.C. Mounting

**Mechanical Specifications:**

- Mechanical Life: 40,000 make-and-break cycles
- Operating Temperature: -30°C to 85°C

**Materials:**

- Case: Diallyl phthalate (DAP)(UL94V-0)
- Actuator: Brass, chrome plated
- Bushing: Brass, nickel plated
- Housing: Stainless Steel
- Terminal/Contact: Silver or gold plated

**Electrical Specifications:**

- Rating: 2A / 250VAC, 5A / 120 VAC or 28 VDC
- Contact Resistance: 10mΩ max. initial @ 2-4VDC 100mA
- Insulation Resistance: 1,000MΩ min.
- Dielectric Strength: 1,000 V RMS@sea level

**Note:**

- RoHS Compliant by Exemption

Mouser Stock No.	Type	Circuit
108-0011-EVX	SPDT	On-On
108-0012-EVX	SPDT	On-Off-On
108-0014-EVX	SPDT	On-(On)
108-0015-EVX	SPDT	On-Off-(On)
108-0016-EVX	SPDT	(On)-Off-(On)

Miniature Toggle Switches  
 108-0011-EVX, 108-0012-EVX, 108-0014-EVX,  
 108-0015-EVX, 108-0016-EVX



Available from Mouser Electronics

www.mouser.com

1-800-346-6873

Specifications are subject to change without notice. No liability or warranty implied by this information. Environmental compliance based on producer documentation.