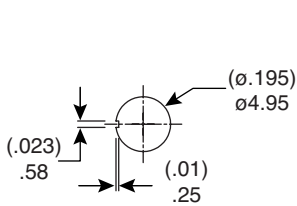
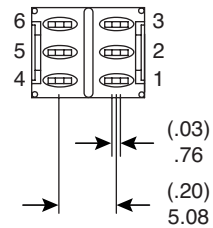
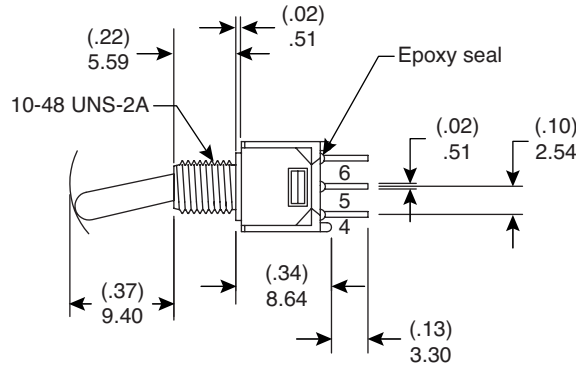
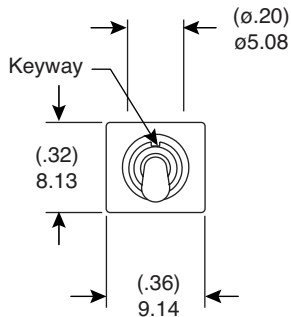
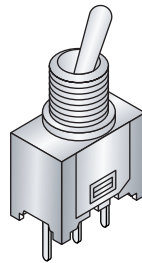
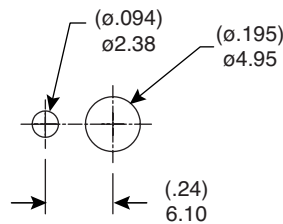


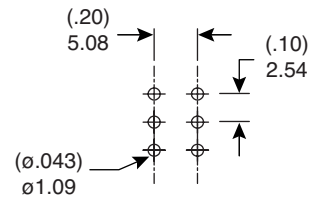
Dimensions: mm (In.)



Without locking ring



With standard locking ring



P.C. Mounting

Panel Mounting

**Mechanical Specifications:**

- Mechanical Life: 30,000 make-and-break cycles
- Operating Temperature: -30°C to 85°C

**Electrical Specifications:**

- Rating: 1A / 250VAC, 3A / 120 VAC or 28 VDC
- Contact Resistance: 20mΩ max. initial @ 2-4VDC 100mA
- Insulation Resistance: 1,000MΩ min.
- Dielectric Strength: 1,000 V RMS@sea level

**Materials:**

- Case: Diallyl phthalate (DAP)(UL94V-0)
- Actuator: Brass, chrome plated
- Bushing: Brass, nickel plated
- Housing: Stainless Steel
- Switch Support: Brass, tin plated
- Terminals/Contact: Brass, with silver or gold plated

**Note:**

- RoHS compliant by exemption

Mouser Stock No.	Type	Circuit
108-0043-EVX	DPDT	On-On
108-0046-EVX	DPDT	On-Off-On

Sub-Miniature Toggle Switches  
108-0043-EVX, 108-0046-EVX



Available from Mouser Electronics

www.mouser.com

1-800-346-6873