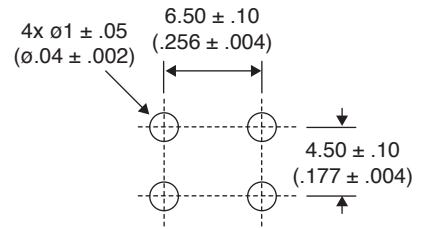
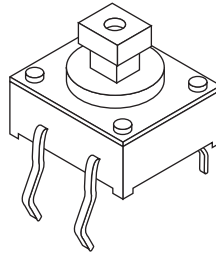
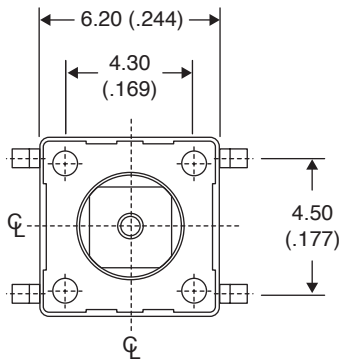
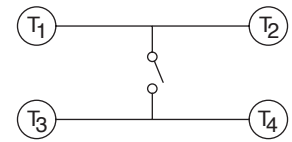
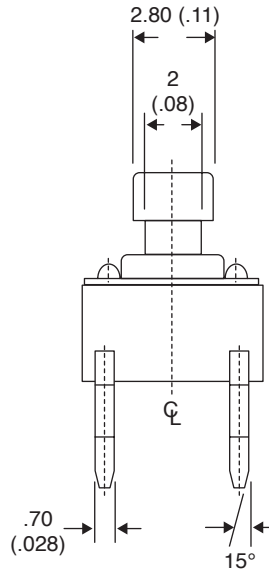
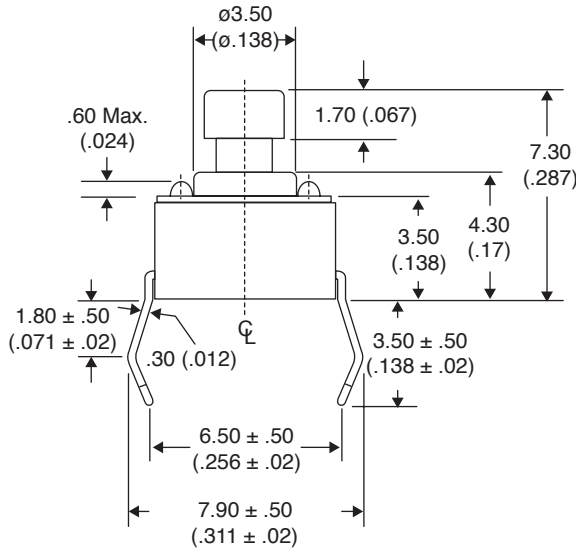


Dimensions: mm (In.)



P.C.B. LAYOUT



CIRCUIT DIAGRAM

**Mechanical Specifications:**

- Operating Life: 300,000 cycles min.
- Operating Temperature: -25°C to +70°C

**Electrical Specifications:**

- Rating: 50mA / 12VDC
- Contact Resistance: 100mΩ max.
- Insulation Resistance: 100MΩ min.
- Dielectric Strength: 250VAC for 1 minute

**Note:**

- RoHS Compliant and process compatible with 260° solder

**Tactile Switch**  
101-TS6111T1605BC-EV



Available from Mouser Electronics

www.mouser.com

1-800-346-6873