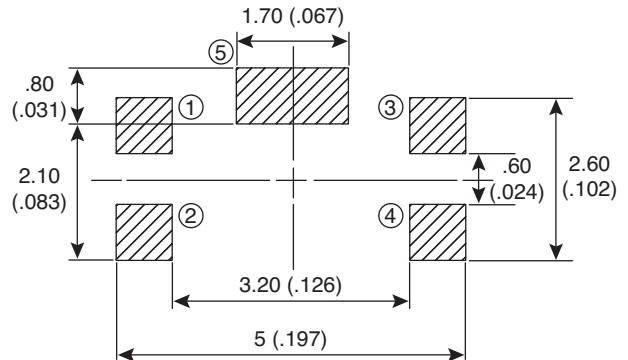
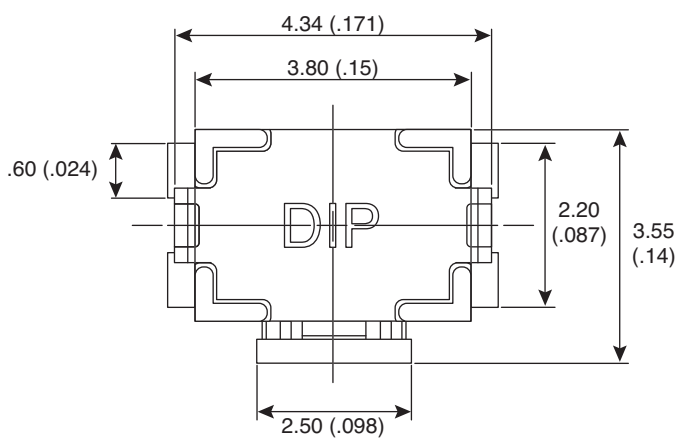
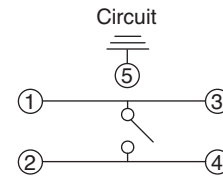
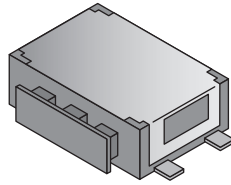
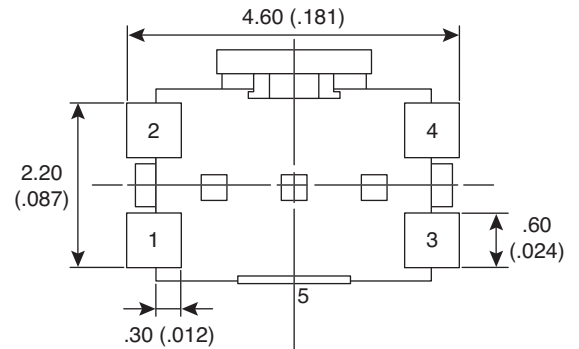
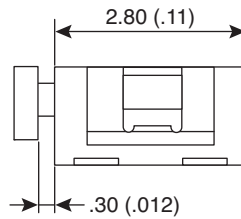
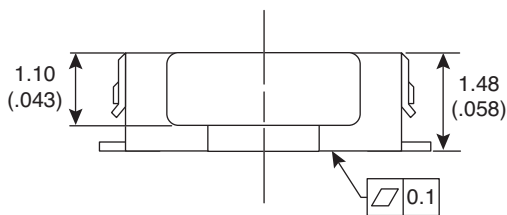


Dimensions: mm (in.)



P.C.B. Layout



Electrical Specifications:

- Rating: 50mA/12VDC
- Dielectric Strength: 100 V AC(50Hz or 60Hz) for 1 minute
- Contact Resistance: 100mΩ max.
- Insulation Resistance: 100VDC 100MΩ min.
- Life: 100,000 cycles min.

Note:

- RoHS Compliant

Mechanical Specifications:

- Operating Temperature: -20° C to +70° C
- Storage Temperature: -30° C to +80° C
- Operating Force: 200 ± 65gf
- Stroke: .20 ± .10mm

Tactile Switch
101-IG14K-EV



Available from Mouser Electronics

www.mouser.com

1-800-346-6873

Specifications are subject to change without notice. No liability or warranty implied by this information. Environmental compliance based on producer documentation.