

Dimensions: mm (In.)

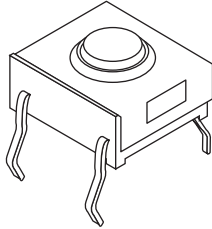


Fig. 1

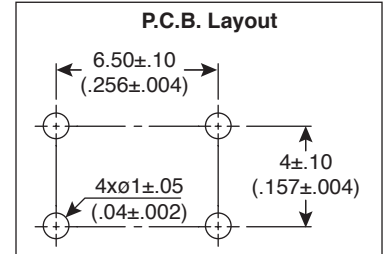
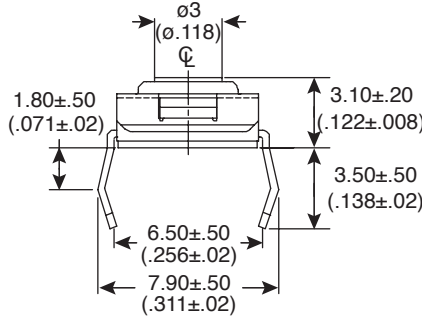
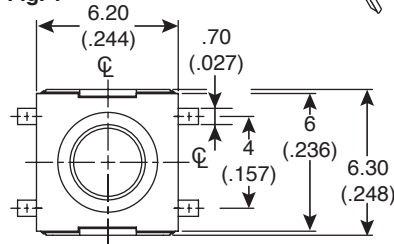
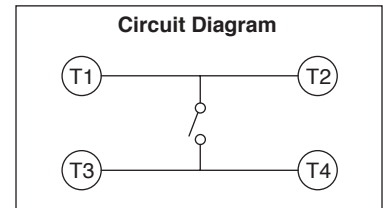
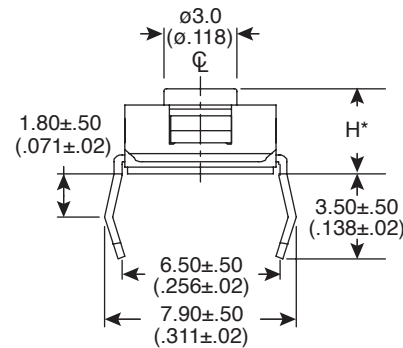
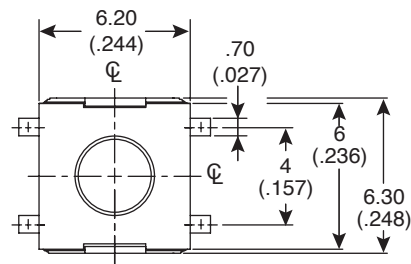


Fig. 2



Mechanical Specifications:

- Type: SPST
- Operation Force:
 - 360 ± 90gf, Transparent TS6711T2604, TS6711T2605, TS6711T3605
 - 260 ± 70gf Red TS6711T2603
 - 180 ± 50gf Brown TS6711T1803
 - 160 ± 50gf Brown TS6711T1602
- Stop Strength: Max 3kgf vertical static load continuously for 15 seconds
- Stroke: 0.25 +0.20 / -0.1mm
 - 0.6 ±0.2mm
 - 0.45 ±0.2mm
- Operating Temperature: -25°C to +70°C
- Storage Temperature: -30°C to +80°C

Electrical Specifications:

- Rating: 50mA/12VDC
- Contact Resistance: 100m max.
- Insulation Resistance: 100M min. at 500VDC
- Dielectric Strength: 250VAC/ minute

Materials:

- Cover: Stainless steel
- Contact Disc: Phosphor bronze with silver cladding
- Terminal: Brass with silver cladding
- Base: UL94V-0 Nylon high-temp. thermoplastic, black
- Stem: High-temp thermoplastic nylon UL 94V-0
- Adhesive Tape: Resin-based
- Metal Stem: Silicone Rubber

Note:

- RoHS Compatible and process compatible with 260° solder.

Mouser Stock No.	Fig.	*Height (mm)	Electrical Life (Cycles min)
101-TS6711T1602-EV	1	--	100K
101-TS6711T1803-EV	2	3.5	500K
101-TS6711T2603-EV	2	3.5	500K
101-TS6711T2604-EV	2	3.8	500K
101-TS6711T2605-EV	2	5.2	500K
101-TS6711T3605-EV	2	5.2	500K

Tactile Switches

101-TS6711T1602-EV, 101-TS6711T1803-EV
 101-TS6711T2603-EV, 101-TS6711T2604-EV
 101-TS6711T2605-EV, 101-TS6711T3605-EV

