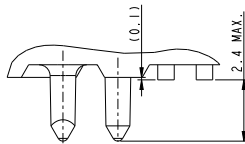
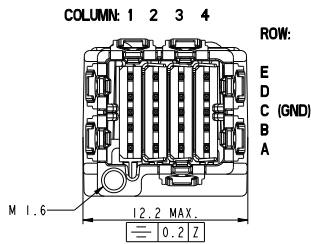
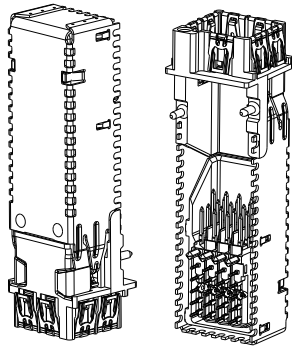
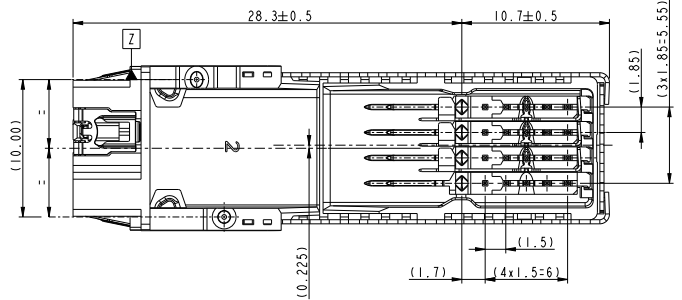
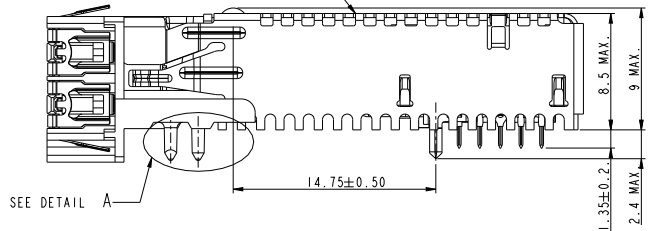
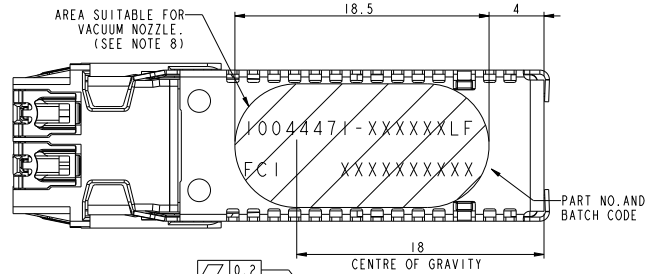


PART NUMBERING	LOADING PATTERN				PACKAGING (SEE NOTE 6)
	COLUMN 1 (NOTE 4)	COLUMN 2	COLUMN 3	COLUMN 4	
10044471-120200LF	UNSHIELDED IMLA	EMPTY	UNSHIELDED IMLA	EMPTY	TAPE ON REEL
10044471-122220LF	UNSHIELDED IMLA	UNSHIELDED IMLA	UNSHIELDED IMLA	UNSHIELDED IMLA	TAPE ON REEL
10044471-121110LF	UNSHIELDED IMLA	SHIELDED IMLA	SHIELDED IMLA	SHIELDED IMLA	TAPE ON REEL



DETAIL A
SCALE 10:1

- NOTES:
- MATES WITH CABLE CONNECTOR 10044473-SERIES
 - MATERIALS:
DIECAST-ENTRY: ZINC ALLOY, PLATING/FINISH: Sn PLATED WITH Ni OVER Cu UNDERLAYER,
TOPCOVER - COPPER ALLOY, PLATING/FINISH: Sn PLATED WITH Ni UNDERLAYER,
SPRINGS - STAINLESS STEEL,
RETAINER - HIGH TEMPERATURE FLAME RETARDANT THERMOPLAST, COLOUR NATURAL,
VERTICAL SHIELDS - COPPER ALLOY, PLATING/FINISH: Sn WITH Ni UNDERLAYER,
HEADER IMLA'S - COPPER ALLOY OVERMOLDED WITH HIGH TEMPERATURE FLAME
RETARDANT THERMOPLAST, COLOUR BLACK,
LEADFRAME PLATING/FINISH: NICKEL UNDERPLATING, Au IN CONTACT ZONE, Sn IN SOLDER TAIL AREA.
 - CONNECTOR CAN BE PICKED UP WITH A MECHANICAL GRIPPER OR A VACUUM NOZZLE,
NOZZLE DIAMETER UP TO 9 MM. ESTIMATED MAXIMUM MASS OF THE PRODUCT 6.00 G.
 - COLUMN 1 IS ALWAYS FILLED WITH AN UNSHIELDED IMLA.
 - FCI PRODUCT SPECIFICATION GS-12-314.
 - PACKAGING: TAPE AND REEL ACCORDING TO EIA-481-B, SEE LAST SHEET.
 - THIS PRODUCT MEETS EUROPEAN UNION DIRECTIVES AND OTHER COUNTRY REGULATIONS
AS DESCRIBED IN GS-22-008.
 - THE CONNECTOR WILL WITHSTAND EXPOSURE TO 260°C PEAK TEMPERATURE
IN A CONVECTION, INFRA-RED OR VAPOR PHASE REFLOW OVEN. FOR MORE DETAILS AND
MOUNTING RECOMMENDATIONS, SEE FCI APPLICATION GUIDE GS-20-048.

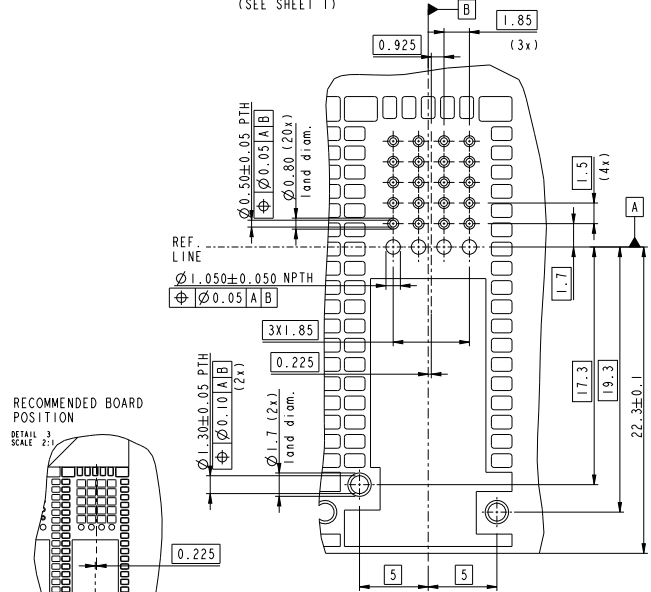


www.fciconnect.com				surface	tolerance std	projection	mm			
				150 1302	150 406	150 1101				
				TOLERANCES UNLESS OTHERWISE SPECIFIED						
tr	tech no	dr	date	Dr P. Poorter	040924	ANGULAR	0.x	±0.3	size	Scale
H	DG11-2099	TER	2011-03-30	Eng GDr/RWe	040805	LINEAR	0.xx	±0.2	ECN	DG09-0134
				Chr R. Weber	040929	0° ±2°	0.xxx	±0.1	Product family	Spec ref
				Appr G. Droesbeke	040929					
C	H05-0009	PEP	2005-08-31							
D	H06-0003	PEP	2006-01-11							
E	H06-0139	PEP	2006-11-13							
F	D009-0010	TER	2009-02-03							
G	D009-0134	TER	2009-04-27							

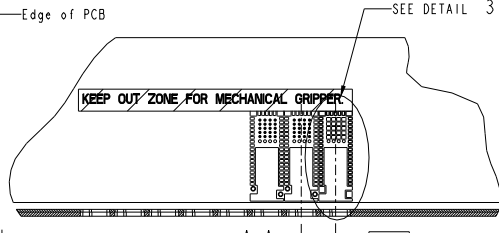
FCI	HEADER 8 PAIR	10044471	Rev.
DENSI-SHIELD 1/0			H
customer copy	sheet 1 of 4		

PDM: Rev:H STATUS Released 8 Revised: Apr 08, 2011

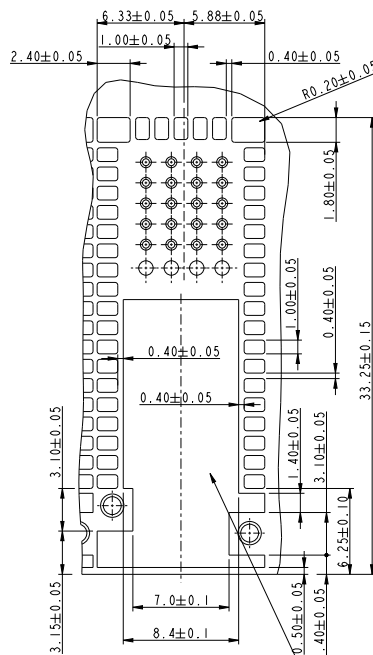
RECOMMENDED HOLE PATTERN AND TRACE DIMENSIONS FOR FULLY EQUIPPED BOARD CONNECTORS. (SEE SHEET 1)



SCALE 5:1

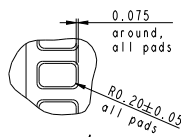
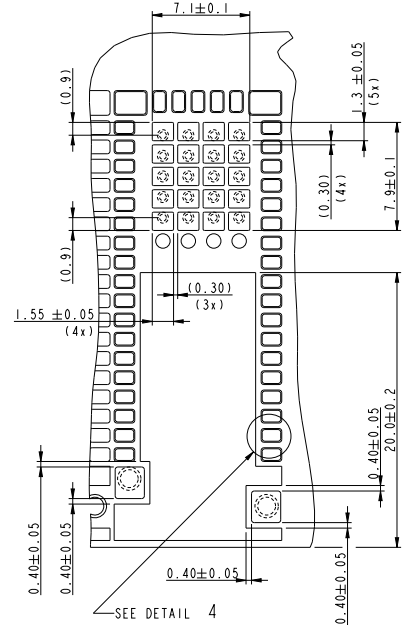


RECOMMENDED ISLAND PATTERN



SOLDER MASK NOT ALLOWED ON THIS REFERENCE PLANE AND LANDS. PLATING THICKNESS MUST BE CONSTANT OVER CONTACT AREA.

RECOMMENDED STENCIL LAYOUT MIN. REQUIRED APERTURES FOR STENCIL THICKNESS 0.125 MM

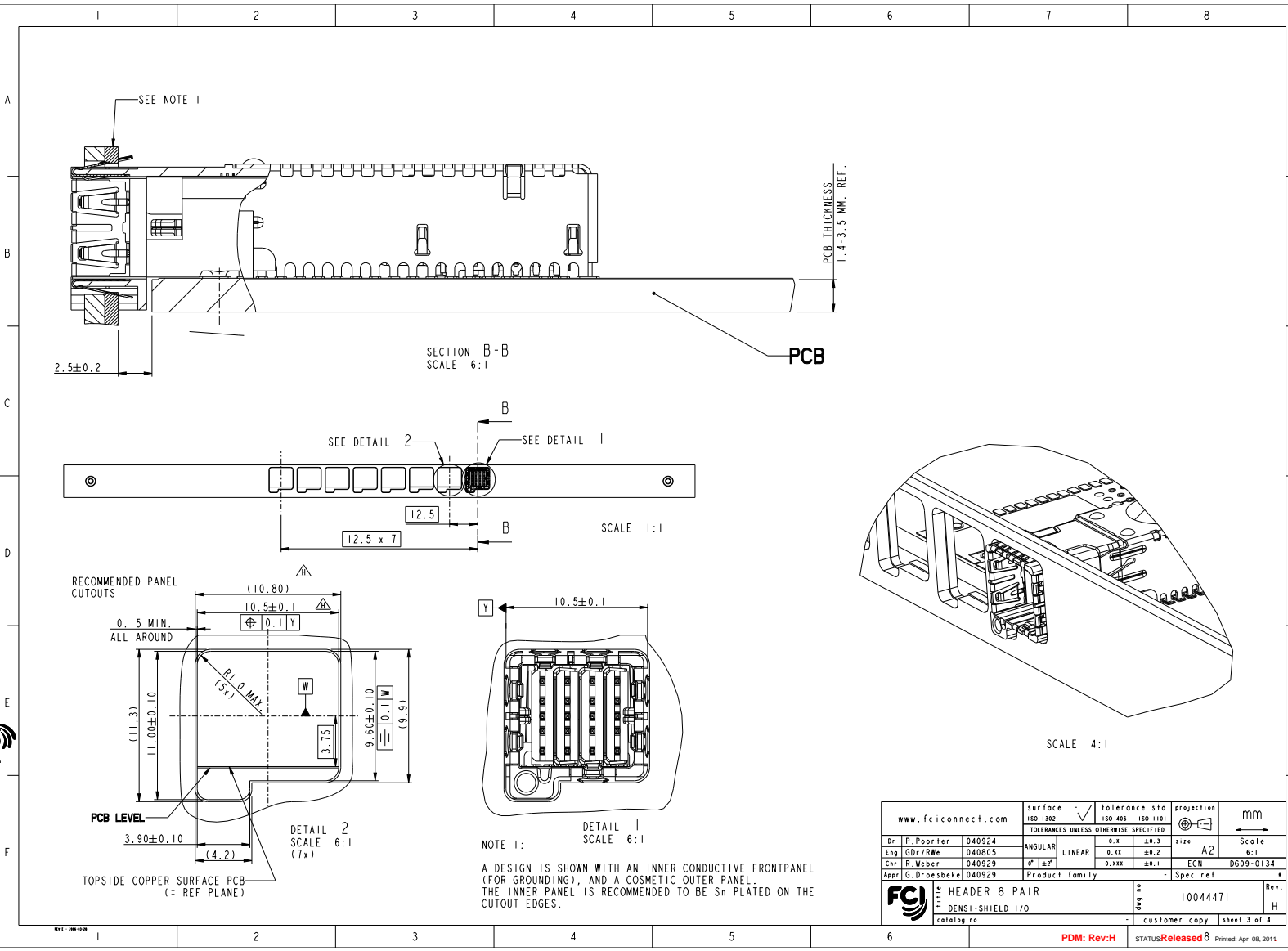


DETAIL 4 SCALE 10:1

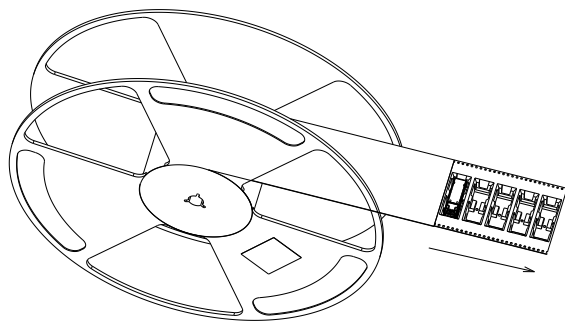
THE SOLDER CONTENT IN THE PASTE SHOULD BE SUFFICIENT, TYPICALLY 50% VOLUME PERCENTAGE. THE SCREEN PRINTING PROCESS (ANGLE, SPEED, PRESSURE ETC.) MUST BE OPTIMISED SO THAT ENOUGH SOLDER IS AVAILABLE.

www.fciconnect.com		surface 150 1302	tolerance std 150 406	projection 150 1101	mm
		TOLERANCES UNLESS OTHERWISE SPECIFIED			
Dr P. Poorter	040924	ANGULAR	0.x	±0.3	Scale
Eng GDr/RWe	040805	LINEAR	0.xx	±0.2	A2
Chr R. Weber	040929	°' ±2"	0.xxx	±0.1	ECN DG09-0134
Appr G. Dreesbeke	040929	Product family		Spec ref	*
FCI HEADERS 8 PAIR		DENSIS-SHIELD 1/0		10044471	Rev.
catalog no		customer copy		sheet 2 of 4	H

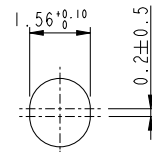
Copyright FCI



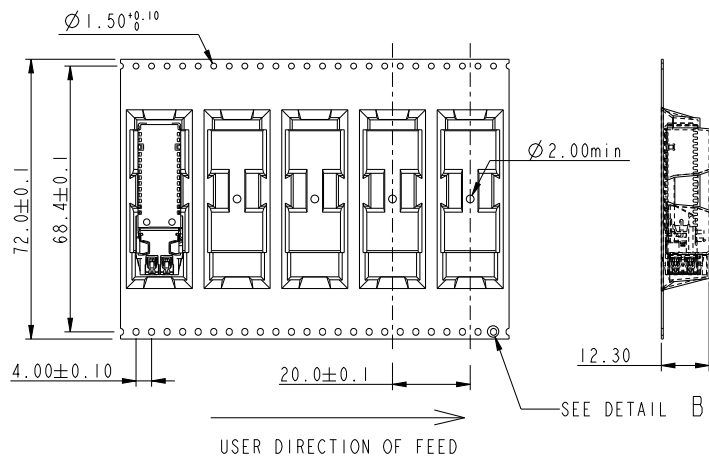
www.fciconnect.com		surface	tolerance std	projection	mm
		150 1302	150 406	150 1101	
TOLERANCES UNLESS OTHERWISE SPECIFIED					
Dr P. Poorter	040924	ANGULAR	0.x	±0.3	size
Eng GDr/RWe	040805	LINEAR	0.xxx	±0.1	A2
Chr R. Weber	040929	°' ±2"	0.xxx	±0.1	ECN
Appr G. Dreesbeke	040929	Product family			Spec ref
FCI		HEADER 8 PAIR		10044471	Rev.
DENSEI-SHIELD 1/0		customer copy		sheet 3 of 4	H
catalog no		PDM: Rev:H		STATUS Released	Revised: Apr 08, 2011



SCALE 3:10



DETAIL B
SCALE 10:1



NOTE:
1: MATERIAL CARRIER TAPE: Polystyrene;
2: MATERIAL COVER TAPE : Polyester;
3: THE PACKAGING IS ANTISTATIC TREATED.

www.fciconnect.com			surface	tolerance std	projection	mm
			ISO 1302	ISO 406 ISO 1101		mm
			TOLERANCES UNLESS OTHERWISE SPECIFIED			
Dr	P. Poorter	040924	ANGULAR	0.X	±0.3	size A3
Eng	GDr/RWe	040805	LINEAR	0.XX	±0.2	Scale 1:1
Chr	R. Weber	040929	0° ±2°	0.XXX	±0.1	ECN DG09-0134
Appr	G. Dreesbeke	040929	Product family		- Spec ref	
			TITLE		dwg no	Rev.
			HEADER & PAIR		10044471	H
			DENSI-SHIELD I/O		customer copy	sheet 4 of 4
			catalog no			

REV E - 2008-03-28

FDM: Rev:H STATUS Released Printed: Apr 08, 2011