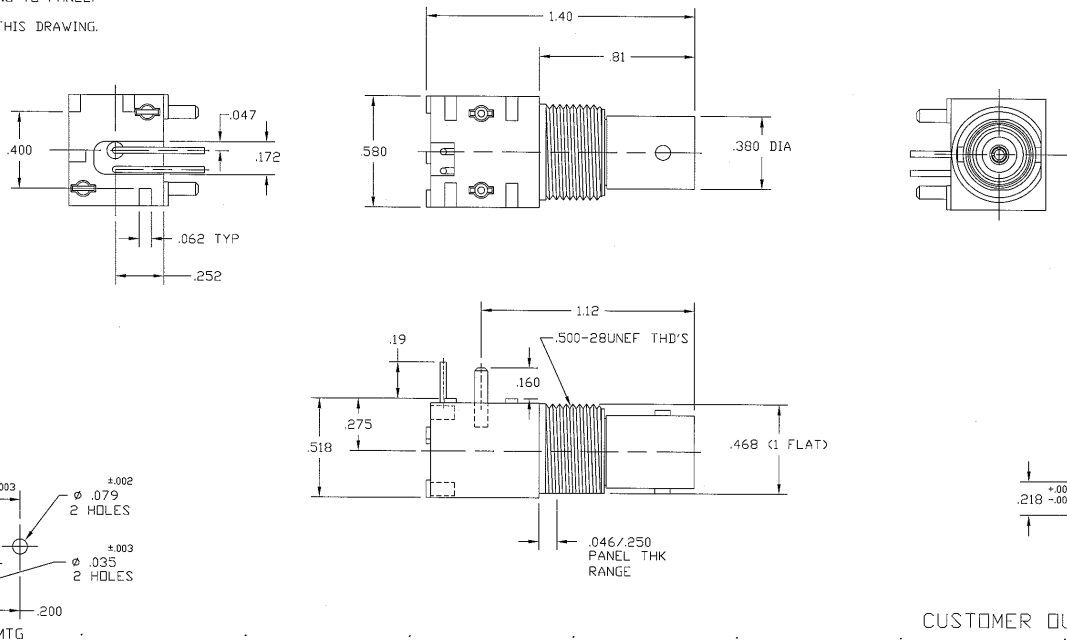


NOTES:

1. MATERIAL: OUTER INSULATOR CASING - BLACK VALOX
INSULATOR - WHITE NDXYL
CENTER CONTACT - GOLD PLATED, PHOSPHOR BRONZE
BODY - NICKEL PLATED ZINC CASTING
MOUNTING LEGS - TIN PLATED
TERMINALS - TIN PLATED COPPER WIRE
2. SEPARATELY SUPPLIED MOUNTING HARDWARE TO BE TIGHTENED DOWN TO 10 INCLBS. MIN./15 INCLBS. MAX. WHEN ASSEMBLING TO PANEL.
3. DO NOT SCALE THIS DRAWING.

31-5540

DRAWING NO.		REVISIONS			
REV	DESCRIPTION	DATE	ECO	APPR	
A	OFFICIAL ENG. RELEASE TO MFG.	4/12/91	38057	DR	
E	SEE SHEET 1 FOR REVISIONS	10/11/96	41588	CPM/	
F	SEE SHEET 1 FOR REVISIONS	2/3/05	45257	CPM/	



CUSTOMER OUTLINE DRAWING

UNLESS OTHERWISE SPECIFIED, DIMENSIONS ARE IN INCHES AND TOLERANCES ARE:
 2 PLACE DECIMAL ±.015 (0,381 mm)
 3 PLACE DECIMAL ±.005 (0,127 mm)
 ANGLES ± 1°

NOTICE - These drawings, specifications, or other data (1) are, and remain the property of Amphenol Corp. (2) must be returned upon request; and (3) are confidential and not to be disclosed to any person other than those to whom they are given by Amphenol Corp. The furnishing of these drawings, specifications, or other data by Amphenol Corp., or to any other person to anyone for any purpose is not to be regarded by implication or otherwise in any manner licensing, granting rights or permitting such holder or any other person to manufacture, use or sell any product, process or design, patented or otherwise, that may in any way be related to or disclosed by said drawings, specifications, or other data.

MATERIAL	DRAWN T. ALBERA	DATE 4/5/91	TITLE BNC JACK R/ANGLE MOUNT PCB RECEPTACLE LOW PROFILE (BLACK)	Amphenol Amphenol Corporation RF/Microwave Operations Danbury, Conn. U.S.A. 06810 SCALE: 2:1 SHEET 2 OF 2
REFERENCE EAR 71004-5	ENGINEER D. ROYCE	DATE 4/8/91		
	APPROVED D. ROYCE	DATE 4/8/91		
	CAD FILE H:\DEPT611\BNC\031\ASSY\5540SHT2	CODE ID 74868	DWG SIZE B	
		DRAWING NO. 31-5540	REV F	