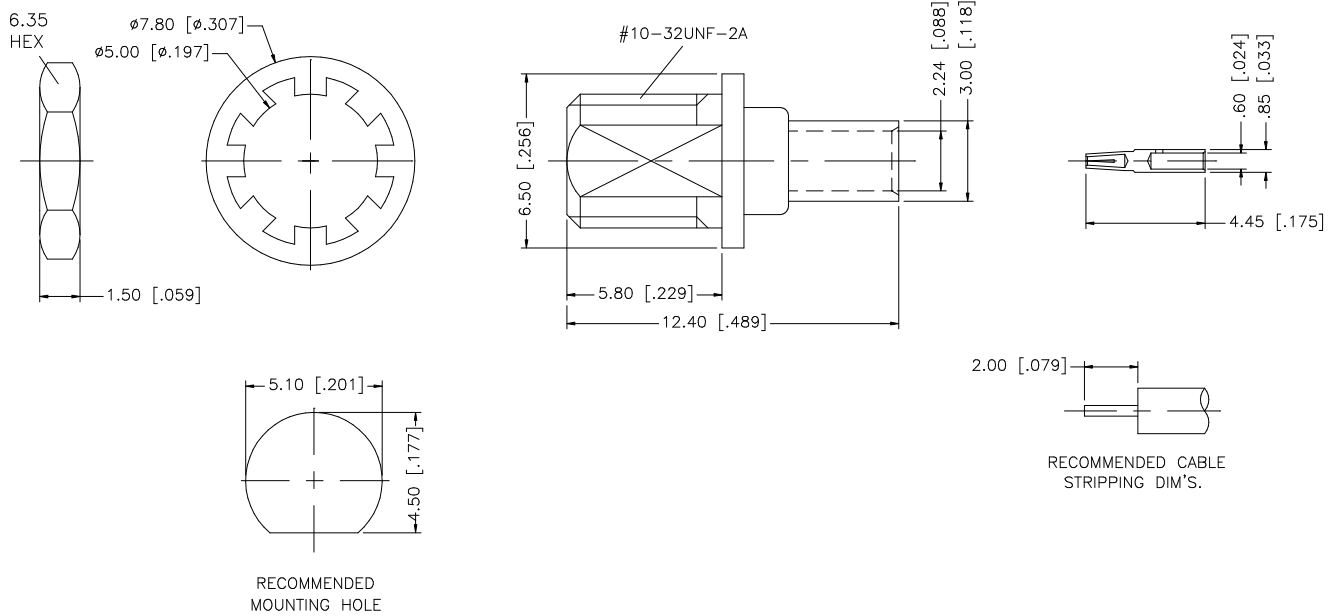


REV.	DATE	DESCRIPTION
NC	05/16/99	INITIAL RELEASE
A	02/19/07	UPDATE DRAWING FORMAT



DESCRIPTION	MATERIAL	FINISH	QTY	UNLESS OTHERWISE SPECIFIED DIMENSIONS ARE IN MILLIMETERS. DIMENSIONS IN [ ] ARE IN INCHES AND FOR CUSTOMER REFERENCE ONLY.	APPROVALS	DATE	<h2 style="color: blue; margin: 0;">Amphenol Connex</h2> <p style="margin: 0;">PART DESCRIPTION</p> <p style="margin: 0; text-align: center;">MMCX BULKHEAD JACK (FOR .085", .086" SEMI RIGID CABLE)</p> <p style="margin: 0;">PART NO.</p> <p style="margin: 0; text-align: center;">262124</p> <p style="margin: 0;">DWG. NO. 262124.DWG    REV. A    SIZE A    SCALE NA</p>	
8				<p style="margin: 0; font-size: small;">UNLESS OTHERWISE SPECIFIED TOLERANCES FOR MILLIMETERS ARE:</p> <p style="margin: 0; font-size: x-small;">0.5 - 8mm ± 0.20mm</p> <p style="margin: 0; font-size: x-small;">8 - 30mm ± 0.40mm</p> <p style="margin: 0; font-size: x-small;">30 - 120mm ± 0.50mm</p> <p style="margin: 0; font-size: small;">UNLESS OTHERWISE SPECIFIED TOLERANCES FOR INCHES ARE:</p> <p style="margin: 0; font-size: x-small;">.020 - .315 = ± 0.007"</p> <p style="margin: 0; font-size: x-small;">.315 - 1.180 = ± 0.015"</p> <p style="margin: 0; font-size: x-small;">1.180 - 4.724 = ± 0.020"</p> <p style="margin: 0; font-size: small;">DO NOT SCALE DRAWING</p>	DRAWN	G.R.S.		02/19/07
7					CHECKED			
6					ISSUED			
5	HEX NUT	BRASS	GOLD		1	SHEET	1 OF 1	
4	LOCK WASHER	BRASS	GOLD	1	CAD FILE	C:/262/262124.DWG		
3	CONTACT PIN	BER. COPPER	GOLD	1				
2	INSULATOR	TEFLON	NATURAL	1				
1	BODY	BRASS	GOLD	1				