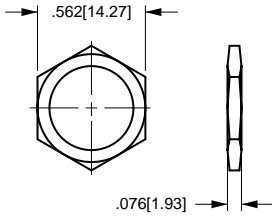


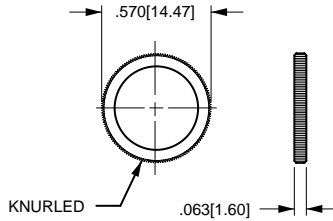
Bushing Accessories

The hardware options and accessories listed below were specifically designed to be used with Carlingswitch toggle and pushbutton switches. To make it easier for you to select the required hardware, we have identified the finish material. The drawings are representative of the actual products. When other hardware options are required, please consult factory.



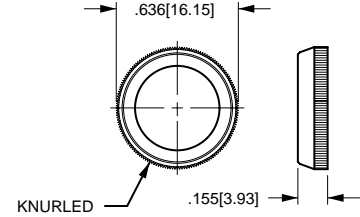
STANDARD HEXAGON BACKUP

.562" X .076"
[14.27] X [1.93]
NICKEL - 380-08602
BLACK - 380-08606



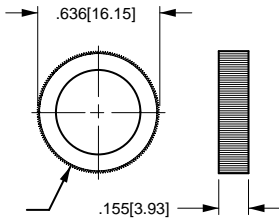
STANDARD FACENUT

.570" X .063"
[14.47] X [1.60]
NICKEL - 380-08693
BLACK - 380-08694



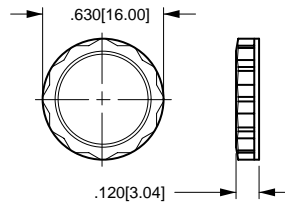
"DRESS" FACENUT

.636" X .155"
[16.15] X [3.93]
NICKEL - 380-08810
BLACK - 380-08811



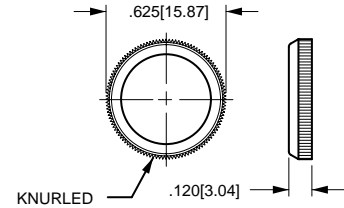
SHOULDER "DRESS" FACENUT

.636" X .155"
[16.15] X [3.93]
BLACK - 380-08819



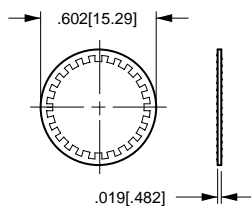
PLASTIC FACENUT

(Fits 9/16" and 14mm wrenches)
.630" X .120"
[16.00] X [3.04]
BLACK - 384-17131



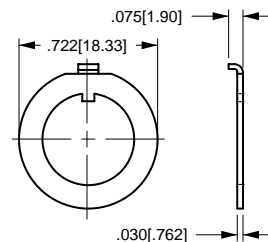
PLASTIC FACENUT

(Wrench supplied N/C)
.625" X .120"
[15.87] X [3.04]
BLACK - 384-17126-001
RED 384-17126-002
WHITE - 384-17126-003



LOCKWASHER

NICKEL-PLATED - 728-15907



LOCKING RING

ZINC - 728-15946
BLACK - 728-15947

Bushing Accessories

BRASS LOCKNUTS

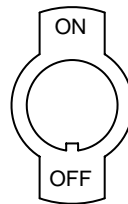
PART NO.	DIMENSIONS, IN.		PLATING
	O.D.	WIDTH	
380-08603	.562	.076	DULL NICKEL
380-08657	.625	.076	NICKEL
380-08666	.562	.094	NICKEL
380-08668	.562	.094	BLACK
380-08675	.500	.060	NICKEL
380-08755	.625	.180	NICKEL

BRASS FACENUTS

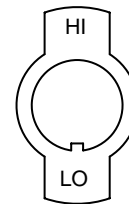
PART NO.	DIMENSIONS, IN.		PLATING
	O.D.	WIDTH	
380-08717	.562	.094	NICKEL
380-08719	.562	.094	BLACK
380-08784	.500	.060	NICKEL
380-08792	.625	.167	NICKEL

All indicator plates are nickel-plated steel. Odd keyway locations, alternate imprints and plating available on special order. Contact factory for minimum quantities and specifications.

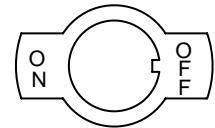
ALL PLATES SHOWN FIT 15/32" (.465[11.81]) BUSHINGS



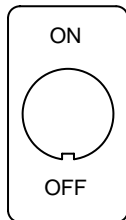
Y01
272-06747



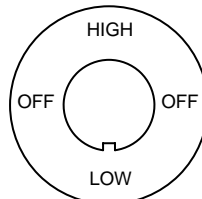
Y02
272-06764



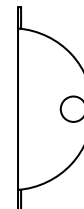
Y51
272-06842



Y101
272-06935



Y311
272-07258



Y500
272-07293

