

Slide Switch 0.7(H)mm, 1.4mm-travel, Surface Mount Type

SSAJ Series



Compact type with 0.7mm body height.



Typical Specifications

Items	Specifications
Rating (max.) / (min.) (Resistive load)	10mA 5V DC/50 μ A 3V DC
Contact resistance (Initial performance/After lifetime)	300m Ω max./500m Ω max.
Operating force	1.5N
Operating life	10,000cycles

Detector

Push

Slide

Rotary

Encoders

Power

Dual-in-line
Package Type

TACT Switch™

Custom-
Products

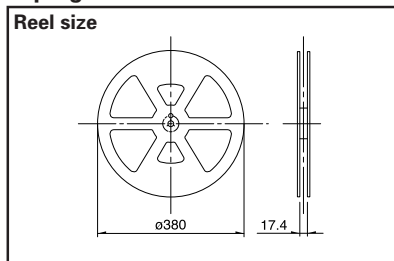
Product Line

Travel (mm)	Operating section directions	Poles	Positions	Changeover timing	Soldering	Location lug	Minimum order unit (pcs.)	Products No.	Drawing No.
1.4	Horizontal	1	2	Not specified	Reflow	With	20,000	SSAJ110100	1
						Without		SSAJ120100	2

Packing specifications

Taping

Unit:mm



Number of packages (pcs.)			Tape width (mm)	Export package measurements (mm)
1 reel	1 case /Japan	1 case /export packing		
5,000	10,000	20,000	16	417 × 409 × 139

Small size
General Use type

Big size
General Use type

Other Use type

Note

Please place purchase orders per minimum order unit N (integer).

Refer to P.175 for soldering conditions.

Dimensions

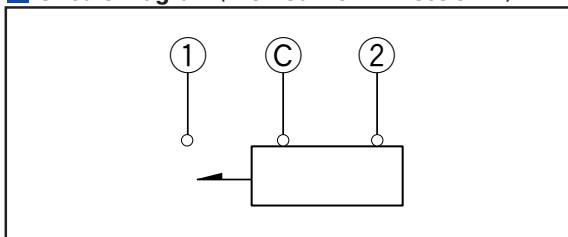
Unit:mm

- Detector
- Push
- Slide
- Rotary
- Encoders
- Power
- Dual-in-line
Package Type
- TACT Switch™
- Custom-
Products








- Small size
General Use type
- Big size
General Use type
- Other Use type

No.	Style	PC board mounting hole and land dimensions (Viewed from the direction A)
1		
2		

Circuit Diagram (Viewed from Direction A)



List of Varieties

Series		SSAL	SSAJ	SSAG	SSAH	SSSS8	SSSS7 ※1	SSSS2	
Photo									
Outline specifications	Travel (mm)	2	1.4	1.5		1.5 2		2	
	Actuator direction	Horizontal				Vertical Horizontal	Horizontal	Vertical Horizontal	
	Number of poles	1				1 2			
Dimensions (mm)	W	7.6	5.5	9.05	9.5	11.2	8.8	13	
	D	2.6	2.5	3		2.6	3	3.5	
	H	1.2	0.7	1.15	0.9	1.4	2		
Operating temperature range		-10°C to +60°C			-30°C to +60°C	-40°C to +85°C			
Automotive use		—	—	—	—	○	—	—	
Rating (max.)/(min.) (Resistive load)		10mA 5V DC			1mA 5V DC	0.3A 5V DC	0.3A 4V DC	0.3A 6V DC	
		50μA 3V DC							
Electrical performance	Initial contact resistance	10Ω max.	300mΩ max.	200mΩ max.		70mΩ max.			
	Insulation resistance	100MΩ min. 100V DC					100MΩ min. 500V DC		
	Voltage proof	100V AC for 1minute					500V AC for 1minute		
Mechanical performance	Terminal strength	3N for 1minute							
	Actuator strength	10N				10N	20N		
Durability	Operating life without load	100,000cycles 10Ω max.	10,000cycles 500mΩ max.	30,000cycles (Lockside) 100,000cycles 500mΩ max. (Recoilside)	10,000cycles 300mΩ max.	10,000cycles 100mΩ max. ※2			
	Operating life without load Load:as rating	10,000cycles 130mΩ max. ※2							
Environmental performance	Cold	-40±2°C for 96h		-20±2°C for 96h		-40°C±2°C for 96h	-20°C±2°C for 96h		
	Dry heat	85±2°C for 96h							
	Damp heat	40±2°C, 90 to 95%RH for 96h							
Soldering	Manual soldering	350±5°C 3s max.				300±5°C 5s max.	300±5°C 3s max.	350±10°C 4s max.	
	Dip soldering	260±5°C 3±1s							
	Reflow soldering	Please see P.175							
Poles-positions	1-2	●	●	—	—	●	●	●	
	1-3	—	—	●	●	●	●	●	
	1-4	—	—	—	—	●	—	●	
	2-2	—	—	—	—	●	—	●	
	2-3	—	—	—	—	●	—	●	
	2-4	—	—	—	—	—	—	●	
	4-2	—	—	—	—	—	—	—	
Page		132	134	136	139	141	144	147	

Detector

Push

Slide

Rotary

Encoders

Power

Dual-in-line
Package Type

TACT Switch™

Custom-
Products

Small size
General Use type

Big size
General Use type

Other Use type

- Slide Switches Soldering Conditions175
- Slide Switches Cautions176

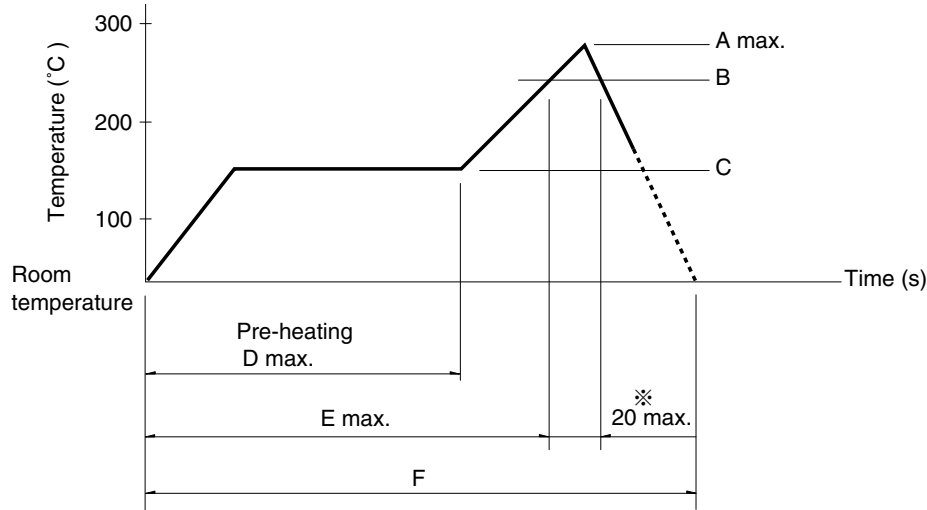
Notes

- ※1. The operating temperature range for automotive applications can be raised upon request. Please contact us for details.
- ※2. Operating life for SSSS213202 is 100 cycles
3. ○marks in "Available for automotive use" indicate that some of the series products can work at the operating temperature range from -40°C to +85°C.

Soldering Conditions

Example of Reflow Soldering Condition

1. Heating method: Double heating method with infrared heater.
2. Temperature measurement: Thermocouple 0.1 to 0.2 ϕ CA (K) or CC (T) at soldering portion (copper foil surface). A heat resisting tape should be used for fixed measurement.
3. Temperature profile



Series (Reflow type)			A (°C) 3s max.	B (°C)	C (°C)	D (s)	E (s)	F (s)
SSSS2	Vertical	1-pole, 3-positions	250	200	150	120	—	—
	Horizontal	1-pole, 2-positions						
	Vertical	1-pole, 2-positions	240					
	Horizontal	1-pole, 3-positions 2-poles, 3-positions						
SSSS7			250					
SSAH, SSAG, SSAJ			260	230				
SSSS8	Horizontal	1-pole, 2-positions 1-pole, 3-positions (1.5mm)	255	200				
	Vertical		240	220				

Notes

1. The condition mentioned above is the temperature on the mounting surface of a PC board. There are cases where the PC board's temperature greatly differs from that of the switch, depending on the PC board's material, size, thickness, etc. The above-stated conditions shall also apply to switch surface temperatures.
2. Soldering conditions differ depending on reflow soldering machines. Prior verification of soldering condition is highly recommended.
3. ※SSAH and SSAG only 40's.

Detector

Push

Slide

Rotary

Encoders

Power

Dual-in-line
Package Type

TACT Switch™

Custom-
Products

Small size
General Use type

Big size
General Use type

Other Use type