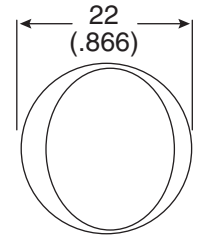
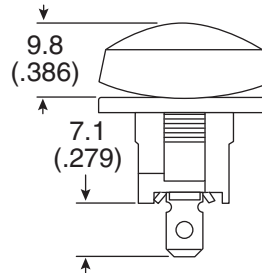
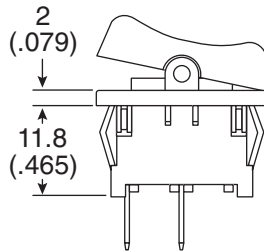
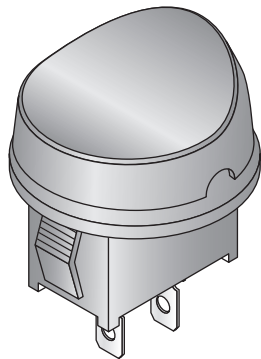
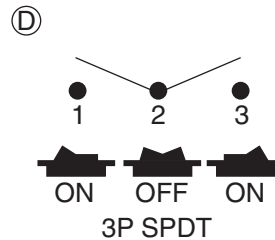
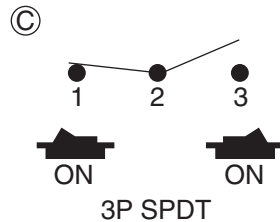
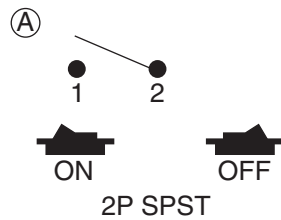


Dimensions: mm (in.)



Function

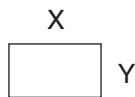


Terminal



.187" Sq.

Cut-out



| | | |
|-----------|----------|----------|
| | X | Y |
| 0.75~1.25 | 19.2-0.1 | 13.0+0.1 |
| 1.25~2 | 19.4-0.1 | 13.0+0.1 |
| 2~3 | 19.8-0.1 | 13.0+0.1 |

Mechanical Specifications:

- Rating: 10A / 125VAC; 6A / 250VAC;
- Contact resistance: 50mΩ max.
- Insulation resistance: 500VDC 100MΩ min.
- Dielectric strength: 1500VAC for 1 min.

Note:

- RoHS Compliant

| Mouser Stock No. | Button | Function |
|--------------------|--------|----------|
| 103-R13-211A-02-EV | Black | A |
| 103-R13-211C-02-EV | Black | C |
| 103-R13-211D-02-EV | Black | D |

Rocker Switches

103-R13-211A-02-EV, 103-R13-211C-02-EV, 103-R13-211D-02-EV



Available from Mouser Electronics

www.mouser.com

1-800-346-6873

Specifications are subject to change without notice. No liability or warranty implied by this information. Environmental compliance based on producer documentation.