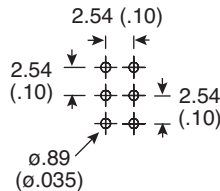
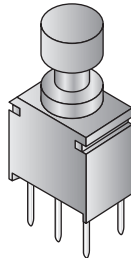
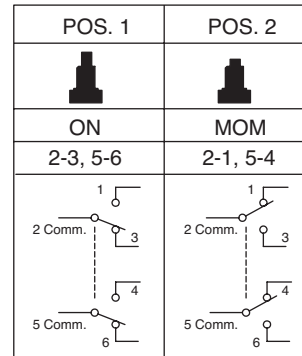


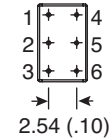
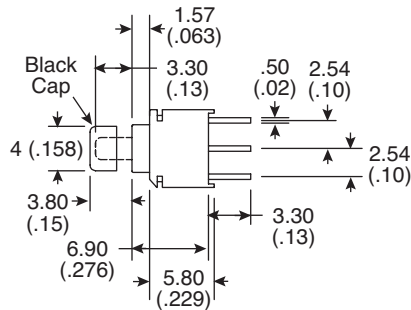
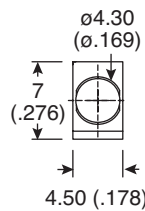
Dimensions: mm (in.)



P.C. MOUNTING



SWITCH FUNCTION



Electrical Specifications:

- Rating: 0.4 Volt-Amps (VA) max. @20V max. (AC or DC)
- Contact Resistance: below 100mΩ typ. initial @ 2-4VDC 100mA
- Insulation Resistance: 500MΩ min.
- Dielectric Strength: 500 V RMS @ sea level

Materials:

- Housing and Base: Glass filled Nylon 6/6 or 4/6, flame retardant, heat stabilized (UL94v-0)
- Actuator: Glass filled nylon 6/6, flame retardant, heat stabilized (UL94V-0), with standard internal o-ring seal
- Stationary Contact: Copper alloy, with gold plate over nickel plate
- Terminals: Copper alloy with tin-lead alloy over nickel plate
- Terminal Seal: Epoxy. All Terminals insert molded

Mechanical Specifications:

- Mechanical Life: 40,000 make-and-break cycles
- Operating Temperature: -30°C to 85°C

Note:

- RoHS Compliant

Sealed Ultra-Miniature Pushbutton Switch
107-8214-EV



Available from Mouser Electronics

www.mouser.com

1-800-346-6873

Specifications are subject to change without notice. No liability or warranty implied by this information. Environmental compliance based on producer documentation.