

# PN Series Alternate & Momentary Action Pushbutton Switches



A

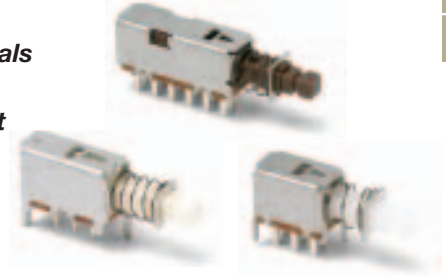
Pushbutton

## Features/Benefits

- Momentary or locking action
- 3 actuation forces for customized feel
- Low cost, reliable contact design
- 1-4 poles available
- RoHS compliant

## Typical Applications

- Computers and peripherals
- Instrumentation and measurement equipment
- Non-power, on-off switch applications



## Specifications

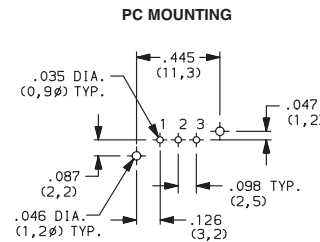
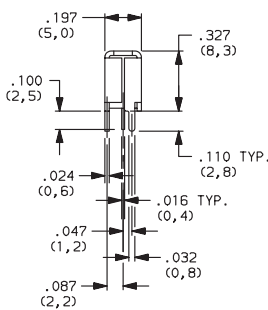
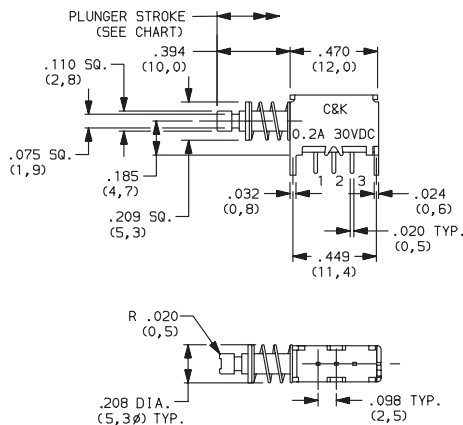
CONTACT RATING: 0.2 AMP @ 30 V DC max.  
 ELECTRICAL LIFE: 10,000 make-and-break cycles at full load.  
 MECHANICAL LIFE: 10,000 on/off cycles.  
 CONTACT RESISTANCE: 50 mΩ max. initial,  
 100 milliohms max. at end of life.  
 INSULATION RESISTANCE: 100 MΩ min. at 500 V DC.  
 DIELECTRIC STRENGTH: 500 V AC min.  
 OPERATING/STORAGE TEMPERATURES: -10°C to 60°C.  
 PACKAGING: Switches are supplied in anti-static bags  
 or anti-static trays.

## Materials

FRAME: Tin plated steel.  
 ACTUATOR: Polyacetal. Color: Manufacturing option.  
 BASE: Laminated phenolic.  
 TERMINALS: Silver plated brass.  
 MOVABLE CONTACTS: Silver plated (or clad) phosphor bronze.  
 RETURN SPRING: Music wire.  
 DETENT SPRING: Phosphor bronze.  
 DETENT SPRING PLATE: Phosphor bronze.  
 RETURN SPRING RETAINER RING: Nickel (or tin) plated steel.  
 TERMINAL SEAL: Epoxy.

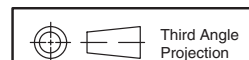
## How To Order

Complete part numbers for PN Series Alternate & Momentary Action Pushbutton Switches are shown on pages A-82 thru A-83.



PN11SBSA03QE  
SPDT

| PART NUMBER  | SWITCH FUNCTION | OPERATING FORCE (typ.) | STROKE      |             | SHORTING/<br>NON-SHORTING | SCHEMATIC |
|--------------|-----------------|------------------------|-------------|-------------|---------------------------|-----------|
|              |                 |                        | LOCK STROKE | FULL STROKE |                           |           |
| PN11SBNA03QE | SPDT Momentary  | 120g max.              | —           | .140 (3,5)  | Non-Shorting              |           |
| PN11SCNA03QE | SPDT Momentary  | 150g                   | —           |             |                           |           |
| PN11SHNA03QE | SPDT Momentary  | 230g                   | —           |             |                           |           |
| PN11SJNA03QE | SPDT Momentary  | 330g                   | —           |             |                           |           |
| PN12SHNA03QE | SPDT Locking    | 230g                   | .100g (2,5) | .140 (3,5)  | Shorting                  |           |
| PN12SJNA03QE | SPDT Locking    | 330g                   | .100g (2,5) |             |                           |           |
| PN11SBSA03QE | SPDT Momentary  | 120g max.              | —           |             |                           |           |
| PN11SCSA03QE | SPDT Momentary  | 150g                   | —           |             |                           |           |
| PN11SHSA03QE | SPDT Momentary  | 230g                   | —           | .140 (3,5)  | Shorting                  |           |
| PN11SJSA03QE | SPDT Momentary  | 330g                   | —           |             |                           |           |
| PN12SHSA03QE | SPDT Locking    | 230g                   | .100g (2,5) |             |                           |           |
| PN12SJSA03QE | SPDT Locking    | 330g                   | .100 (2,5)  |             |                           |           |



Dimensions are shown: Inches (mm)  
 Specifications and dimensions subject to change





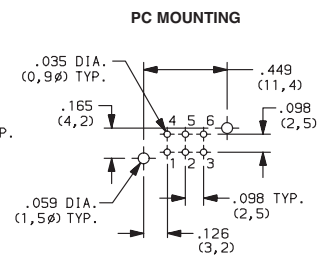
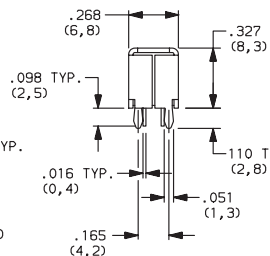
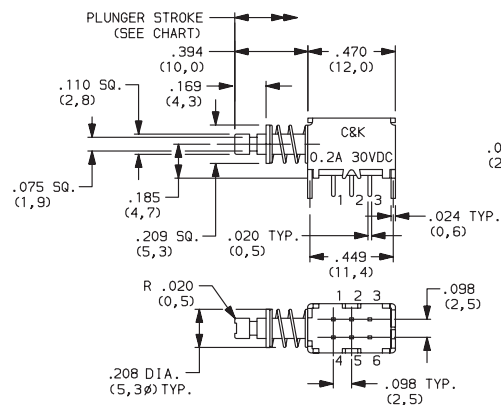
A

Pushbutton

# PN Series Alternate & Momentary Action Pushbutton Switches



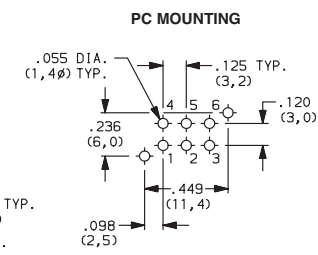
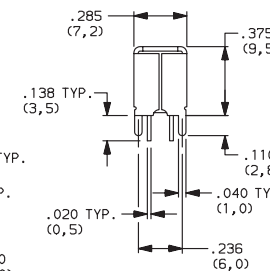
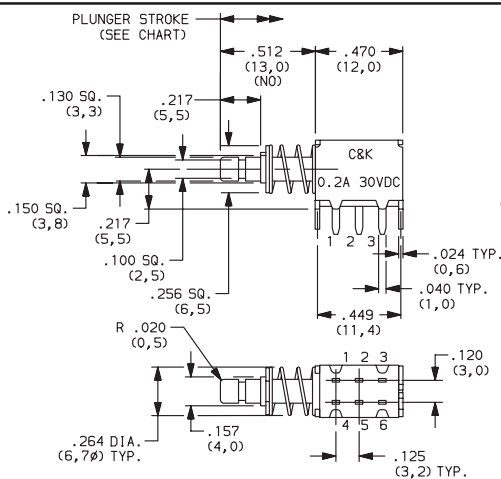
PN21SBSA03QE  
DPDT



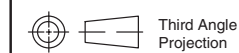
| PART NUMBER  | SWITCH FUNCTION | OPERATING FORCE (typ.) | STROKE      |             | SHORTING/<br>NON-SHORTING | SCHEMATIC |
|--------------|-----------------|------------------------|-------------|-------------|---------------------------|-----------|
|              |                 |                        | LOCK STROKE | FULL STROKE |                           |           |
| PN21SBSA03QE | DPDT Momentary  | 120g max.              | —           | .140 (3,5)  | Non-Shorting              |           |
| PN21SDNA03QE | DPDT Momentary  | 175g                   | —           |             |                           |           |
| PN21SJNA03QE | DPDT Momentary  | 330g                   | —           |             |                           |           |
| PN22SJNA03QE | DPDT Locking    | 330g                   | .100 (2,5)  | .140 (3,5)  | Shorting                  |           |
| PN21SBSA03QE | DPDT Momentary  | 120g max.              | —           |             |                           |           |
| PN21SDSA03QE | DPDT Momentary  | 175g                   | —           |             |                           |           |
| PN21SJSA03QE | DPDT Momentary  | 330g                   | —           | .140 (3,5)  | Shorting                  |           |
| PN22SJSA03QE | DPDT Locking    | 330g                   | .100 (2,5)  |             |                           |           |



PN21LASA03QE  
DPDT



| PART NUMBER  | SWITCH FUNCTION | OPERATING FORCE (typ.) | STROKE      |             | SHORTING/<br>NON-SHORTING | SCHEMATIC |
|--------------|-----------------|------------------------|-------------|-------------|---------------------------|-----------|
|              |                 |                        | LOCK STROKE | FULL STROKE |                           |           |
| PN21LANA03QE | DPDT Momentary  | 100g max.              | —           | .140 (3,5)  | Non-Shorting              |           |
| PN21LFNA03QE | DPDT Momentary  | 120g                   | —           |             |                           |           |
| PN21LDNA03QE | DPDT Momentary  | 175g                   | —           |             |                           |           |
| PN21LENA03QE | DPDT Momentary  | 300g                   | —           | .140 (3,5)  | Shorting                  |           |
| PN22LENA03QE | DPDT Locking    | 300g                   | .100 (2,5)  |             |                           |           |
| PN21LASA03QE | DPDT Momentary  | 100g max.              | —           |             |                           |           |
| PN21LFSA03QE | DPDT Momentary  | 120g                   | —           | .140 (3,5)  | Shorting                  |           |
| PN21LDSA03QE | DPDT Momentary  | 175g                   | —           |             |                           |           |
| PN21LESA03QE | DPDT Momentary  | 300g                   | —           | .140 (3,5)  | Shorting                  |           |
| PN22LESA03QE | DPDT Locking    | 300g                   | .100 (2,5)  |             |                           |           |



Third Angle  
Projection



Dimensions are shown: Inches (mm)  
Specifications and dimensions subject to change

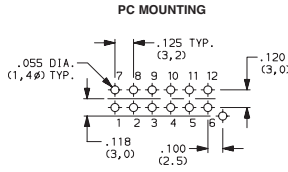
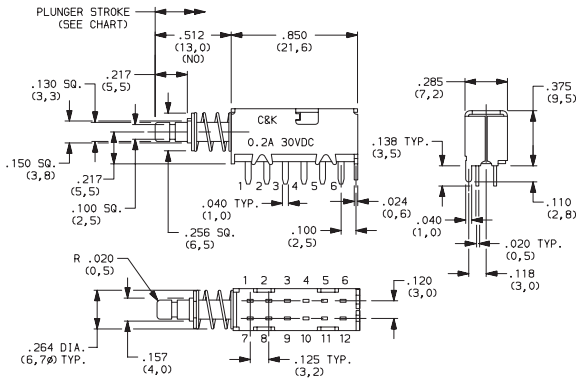
www.ck-components.com

# PN Series Alternate & Momentary Action Pushbutton Switches



A

Pushbutton

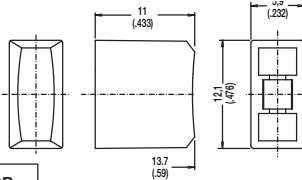


PN41LGSA02QE  
4PDT

| PART NUMBER  | SWITCH FUNCTION | OPERATING FORCE (typ.) | STROKE      |             | SHORTING/<br>NON-SHORTING | SCHEMATIC |
|--------------|-----------------|------------------------|-------------|-------------|---------------------------|-----------|
|              |                 |                        | LOCK STROKE | FULL STROKE |                           |           |
| PN41LGNA02QE | 4PDT Momentary  | 175g                   | -           | .140 (3,5)  | Non-Shorting              |           |
| PN41LENA02QE | 4PDT Momentary  | 300g                   |             |             |                           |           |
| PN42LENA02QE | 4PDT Locking    | 300g                   | .100 (2,5)  |             |                           |           |
| PN41LGSA02QE | 4PDT Momentary  | 175g                   | -           | .140 (3,5)  | Shorting                  |           |
| PN41LESA02QE | 4PDT Momentary  | 300g                   |             |             |                           |           |
| PN42LESA02QE | 4PDT Locking    | 300g                   | .100 (2,5)  |             |                           |           |

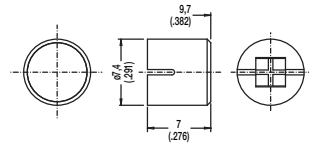
BUTTONS MUST BE ORDERED SEPARATELY. SHIPPED IN BULK.

## PE



| OPTION CODE | COLOR |
|-------------|-------|
| RD          | Red   |
| GY          | Gray  |
| BK          | Black |
| WH          | White |

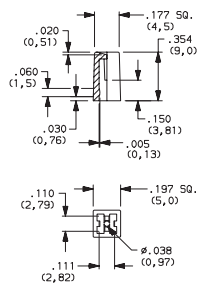
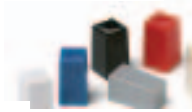
## PV



PE and PV buttons fit .130" square plungers

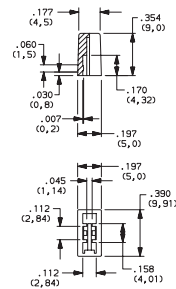
## Indexed

- G001A Black
- G001G Gray
- G001I Ivory
- G001R Red



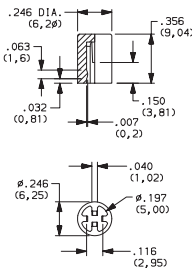
## Rectangular

- G002A Black
- G002G Gray
- G002I Ivory
- G002R Red



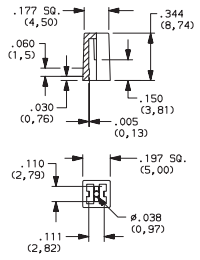
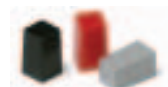
## Round

- G003A Black
- G003G Gray
- G003I Ivory
- G003R Red



## Square

- G004A Black
- G004G Gray
- G004I Ivory
- G004R Red



G001, G002, G003 and G004 buttons fit .110" square plungers.



Dimensions are shown: Inches (mm)  
Specifications and dimensions subject to change



www.ck-components.com