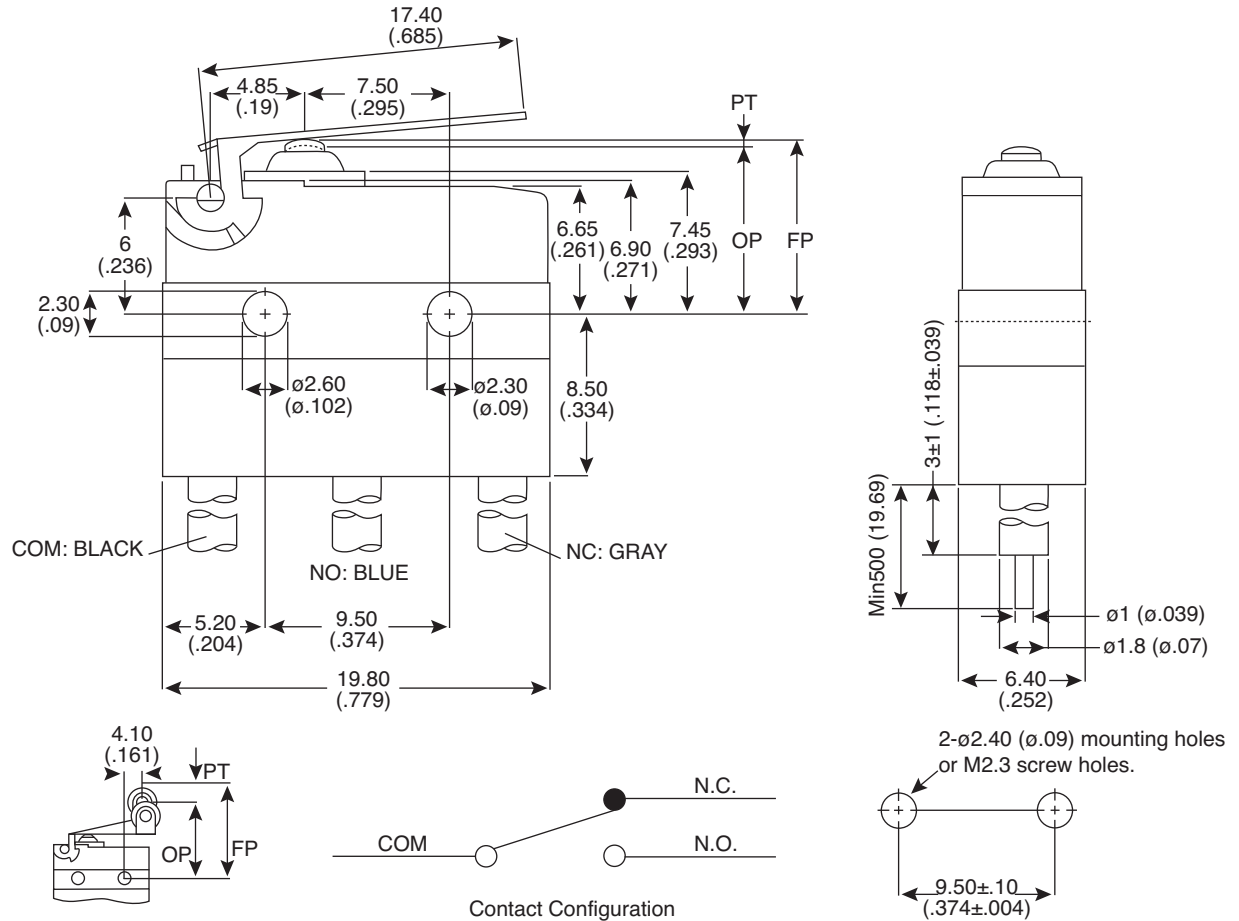


Dimensions: mm (in.)



**Mechanical Specifications:**

- Operating Frequency: 120 operations/min
- Mechanical Life: 2,000,000 operation Min.

**Note:**

- RoHS Compliant and Process Compatible with 260° solder.

**Electrical Specifications:**

- Operating Frequency: 10~30 operations/min
- Electrical Life: 6,000~50,000 operations
- Rating: 6A/125VAC/250VAC
- Contact Resistance: 100m $\Omega$  max.
- Insulation Resistance: 100m $\Omega$  min. at 500VDC
- Dielectric Strength: 1,000VAC RMS (50-60HZ)

**Operating Characteristics:**

- OF Max. (g): 100
- OP (mm): 14.5 ± 1.1
- PT Max. (mm): 4.3
- OT Min. (mm): 0.9
- MD Max. (mm): 0.6
- FP Max. (mm): 17.7
- RF Max. (g): 20

**Sealed Snap Switch**  
101-71-06-100RR-EV



Available from Mouser Electronics

www.mouser.com

1-800-346-6873

Specifications are subject to change without notice. No liability or warranty implied by this information. Environmental compliance based on producer documentation.