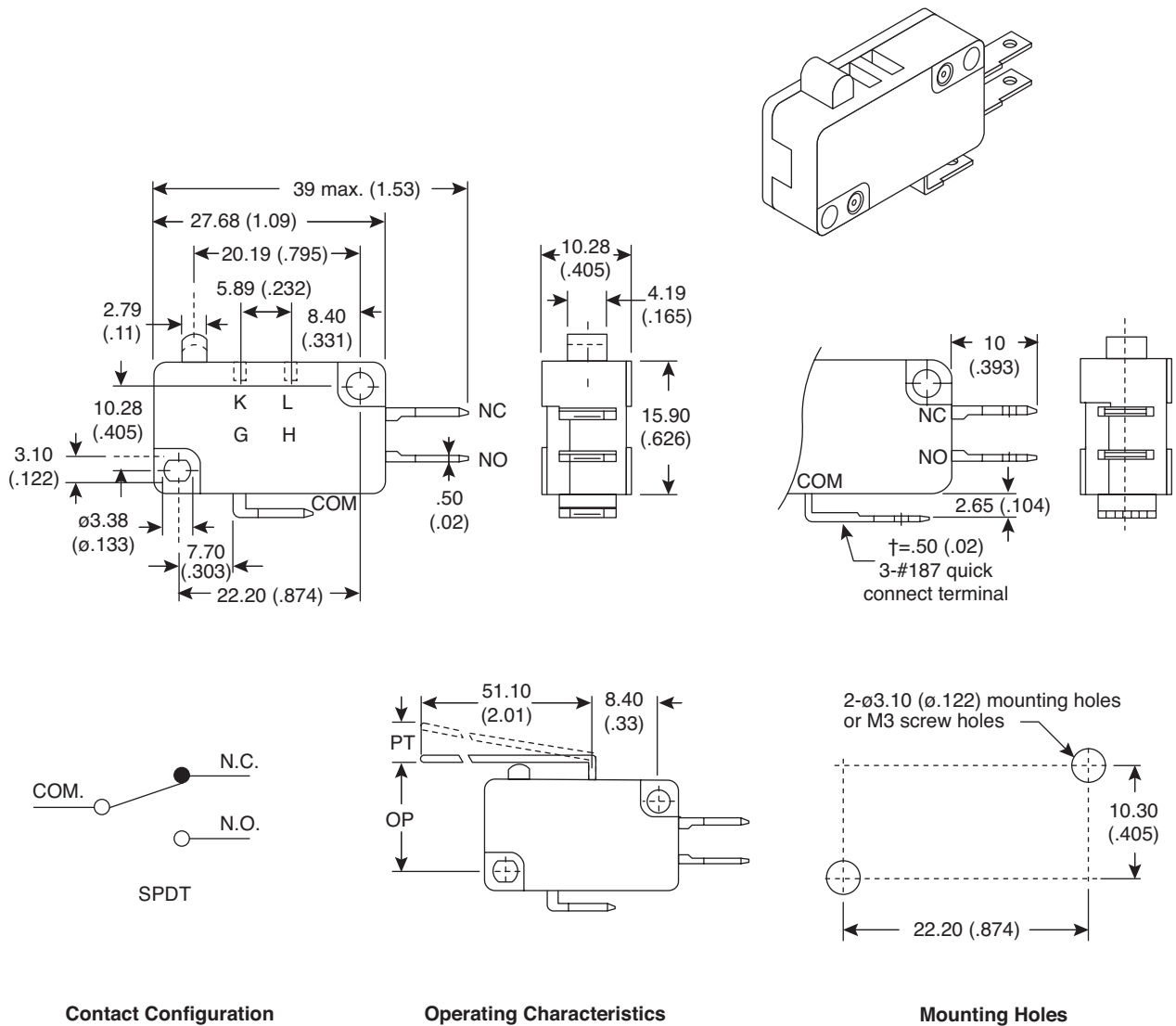


Dimensions: mm (In.)



Contact Configuration

Operating Characteristics

Mounting Holes

Mechanical Specifications:

- Operating Frequency: 300 operations/min
- Life: 5,000,000~ 10,000,000 operations

Note:

- RoHS Compliant and process compatible with 260° solder

Electrical Specifications:

- Rating: 10A/125/250VAC
- Insulation Resistance (at 500VDC): 100M Ω min.
- Dielectric Strength: 1,000VAC RMS (50-60HZ)
- Contact Resistance (initial): 30m Ω , 100m Ω max.
- Operating Frequency: 10~30 operations/min
- Life: 6,000~100,000 operations

Operating Characteristics:

- OF Max. (g): 13
- OP (mm): 15.3 \pm 2.5
- PT Max. (mm): 7.60
- OT Min. (mm): 3.00
- MD Max. (mm): 1.20

Miniature Snap Switch
101-21-06-013ST-EV



Available from Mouser Electronics

www.mouser.com

1-800-346-6873