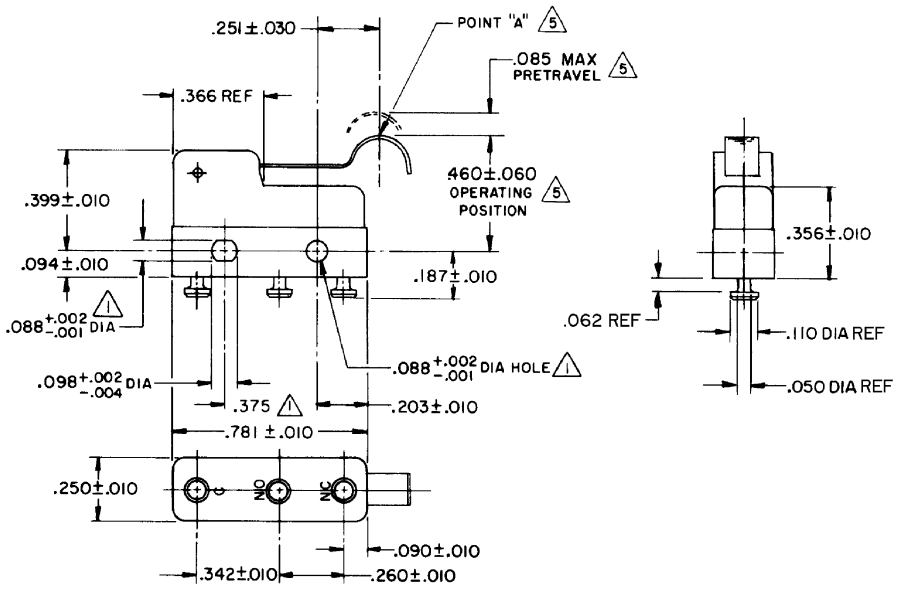
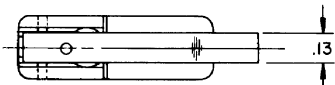


FO-55111-A

HONEYWELL
PART NUMBER
311SM25-T
PRODUCT CODE
TZA2500

REV	DOCUMENT	CHANGED BY	CHECK
7	0038114	KVS 03JUN08	ASD



NOTE -
 1 MOUNTING HOLES WILL ACCEPT PINS OR SCREWS OF .087 MAX DIA ON .375 ± .002 CENTERS
 2 SWITCH WILL WITHSTAND TEMPERATURE OF 250°F
 3 TERMINALS ARE PLATED FOR SOLDERING
 4 MATING CONTACT SURFACES ARE 24K SOLID GOLD OVERLAY
 5 CHARACTERISTICS TAKEN AT POINT "A"

RELEASE NO. SR - 12420
 REPLACES -

CHARACTERISTICS	5
OPERATING FORCE	40 GRAM MAX
RELEASE FORCE	7 GRAM MIN
DIFFERENTIAL TRAVEL	.019 MAX
OVERTRAVEL	.018 MIN

ELECTRICAL DATA	
CONTACT ARRANGEMENT S P D T	
30 VOLTS DC RATING	
INDUCTIVE	SEA LEVEL 50,000 FT
RESISTIVE	1/2 AMP 1/2 AMP
	1 AMP 1 AMP
MAXIMUM INRUSH 2 AMP	
KEMA CE	1A, 250V ~ T85 1E4
UL CSA	1A, 125 VAC

DESIGN UNITS: INCH	
TOLERANCES UNLESS NOTED:	
NO PLACE	X ± 0.030
ONE PLACE	.X ± 0.015
TWO PLACE	.XX ± 0.005
THREE PLACE	.XXX ±
FOUR PLACE	.XXXX ±
ANGLES	±
THIRD ANGLE PROJECTION	

DRAWN	VK	06NOV 07
CHECK	RJ	06NOV 07
THIS DRAWING COVERS A PROPRIETARY ITEM AND IS THE PROPERTY OF HONEYWELL. THIS DRAWING IS NOT TO BE COPIED OR USED WITHOUT THE PERMISSION OF HONEYWELL.		
INTERPRET PER ANSI Y14.5M-1982 OTHER HONEYWELL ENGINEERING STANDARDS MAY APPLY		
RASTER		

Honeywell			
TITLE SWITCH - BASIC			
SIZE	TYPE	DRAWING NAME	REV
B	I	311SM25-T	7
SCALE	-	WEIGHT .006 LB MAX	SHEET 1 OF 1

4

3

2

1