

LCA Series Subminiature Snap-acting Switches



Features/Benefits

- Compact design
- Long life and high electrical capacity
- Quick connect, solder terminals, PC terminals
- Wide variety of actuator styles
- RoHS compatible

Typical Applications

- Motorized equipment
- Sump pump
- Thermostatic controls



Specifications

CONTACT RATING: From low level to 10.1 AMPS @ 125/250 V AC
 ELECTRICAL LIFE: 10,000 cycles
 INSULATION RESISTANCE: 100 M ohm min.
 DIELECTRIC STRENGTH: 1,500 Vrms min. @ sea level.
 OPERATING TEMPERATURE: -40°C to +125°C
 OPERATING FORCE: 150 grams at actuator button MAX.
 Forces are less at free end of lever actuators; (see ACTUATOR'S option sections).
 MOUNTING: 2-56 screws, torque 2.3 in/lbs max.

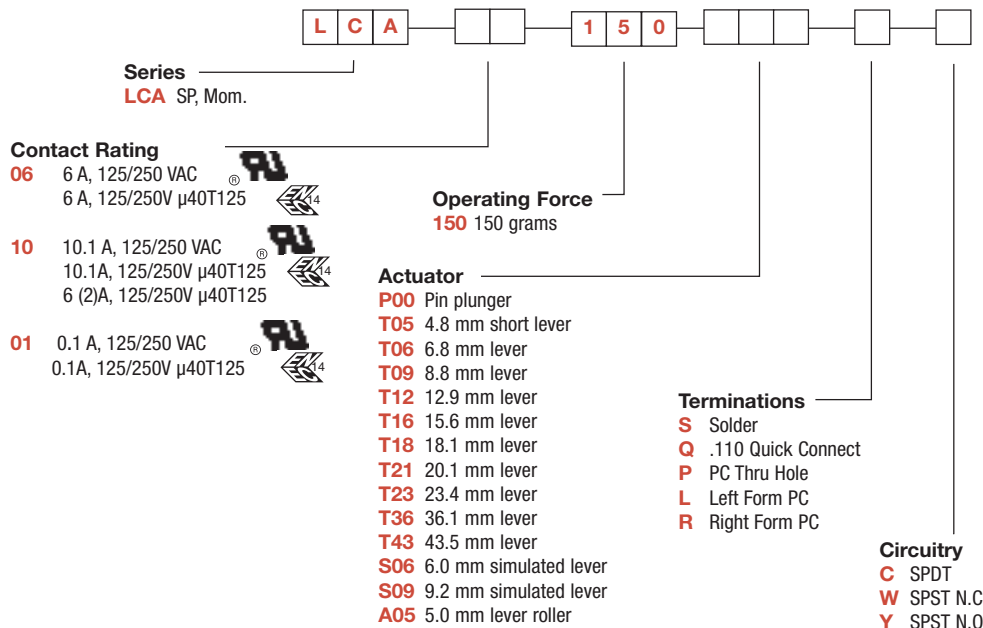
NOTE: Specifications and materials listed above are for switches with standard options.
 For information on specific and custom switches, consult Customer Service center.

Materials

SWITCH HOUSING: Thermoplastic polyester
 ACTUATOR BUTTON: Thermoplastic polyester.
 SPRING: Copper alloy.
 PIVOT: Copper alloy.
 MOVABLE CONTACTS: Silver Nickel for 6A and 10.1A option
 Gold plate for 0.1A option
 STATIONARY CONTACTS: Silver nickel on copper alloy.
 TERMINALS: Copper alloy.
 ACTUATOR LEVER: Stainless steel.

Build-A-Switch

To order, simply select desired option from each category and place in the appropriate box. Available options are shown and described on pages J-22 thru J-24. For additional options not shown in catalog, consult Customer Service Center.



Dimensions are shown: mm
 Specifications and dimensions subject to change

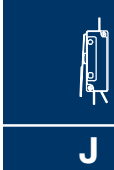
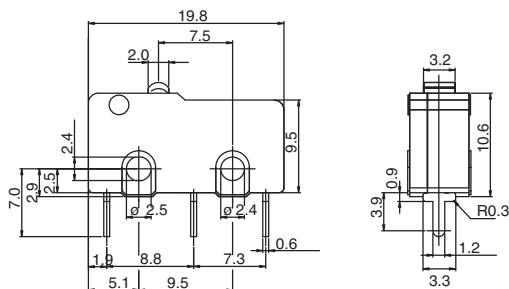


Snap-acting

LCA Series Subminiature Snap-acting Switches

SERIES

LCA



Snap-acting

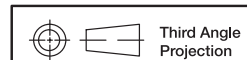
ELECTRICAL RATING

RoHS COMPLIANT *	RoHS COMPATIBLE *	OPTION CODE	ELECTRICAL RATING
YES	YES	06	6A, 125/250 VAC
YES	YES	10	10.1A, 125/250 VAC
YES	YES	01	.1A, 125/250 VAC

* Note: See Technical Data section of this catalog for RoHS compliant and compatible definition and specifications.

OPERATING FORCE

OPTION CODE	OPERATING FORCES (grams)
150	150 grams max.



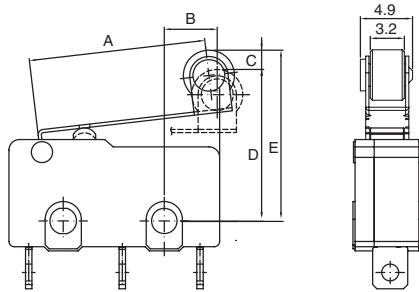
Dimensions are shown: mm
Specifications and dimensions subject to change

www.ck-components.com

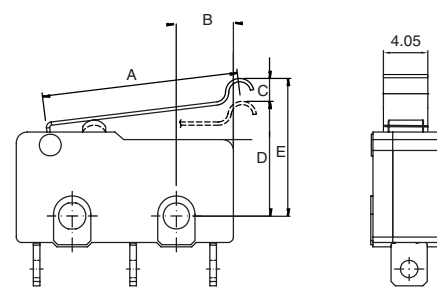
LCA Series Subminiature Snap-acting Switches

ACTUATOR

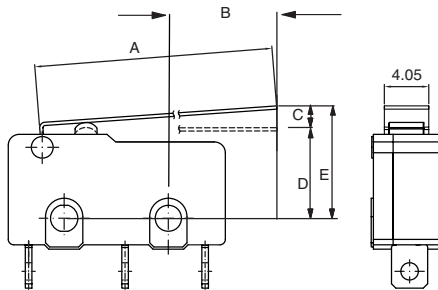
A LEVER ROLLER



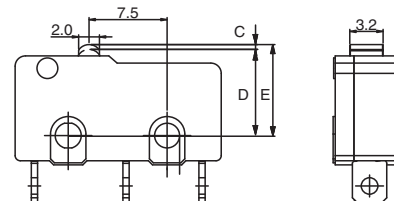
S SIMULATED ROLLER



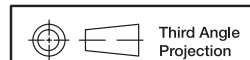
T LEVER



P00



ACTUATOR OPTION CODE	A mm LENGTH OF LEVER	B mm Lever length for front mtg. hole to OP	C mm PRE TRAVEL (MAX)	D mm OPERATING POSITION	E mm FREE POSITION (MAX)	Diff. Motion mm max	Oper. Force max. grams	Release Force min. grams
P00	NA	NA	1.1	8.5 ± 0.3	9.3	0.20	150	25
T05	16.70	4.80	3.6	8.9 ± .08	11.7	0.80	50	6
T06	18.70	6.80	4.0	8.9 ± .09	12.0	0.90	45	5
T09	20.60	9.10	4.3	9.15 ± 1.35	13.5	1.83	33	2
T12	24.80	12.90	5.4	8.9 ± 1.5	13.1	1.19	34	2
T16	27.10	15.60	6.0	9.15 ± 1.7	15.2	1.30	40	1
T18	30.00	18.50	6.0	9.15 ± 1.9	14.6	1.50	32	1
T21	32.00	20.50	6.4	9.15 ± 1.95	15.5	1.60	35	1
T23	35.20	23.70	8.6	8.9 ± 2.0	15.6	1.80	25	1
T36	47.60	36.10	10.9	8.85 ± 4.2	17.1	3.40	30	1
T43	55.20	43.50	13.3	8.9 ± 3.0	19.2	2.90	12	1
S06	17.90	6.00	3.9	10.8 ± 0.9	13.76	0.86	47	5
S09	21.10	9.20	5.7	16.1 ± 1.5	20.3	1.00	42	2
A05	16.60	5.00	3.8	14.6 ± 0.8	17.6	0.80	50	6

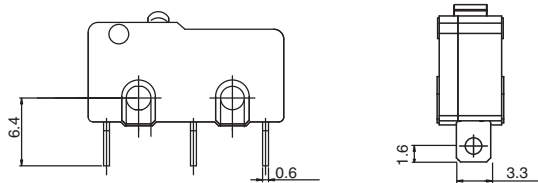


Dimensions are shown: mm
Specifications and dimensions subject to change

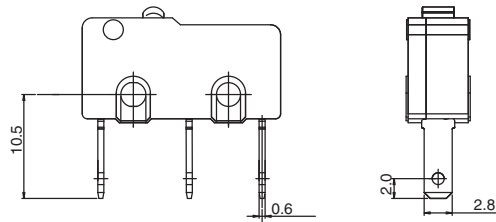
LCA Series Subminiature Snap-acting Switches

TERMINATIONS

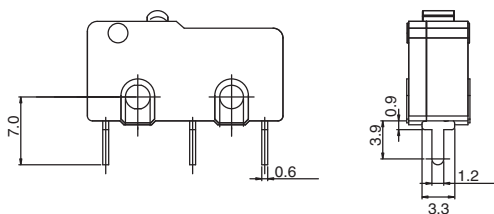
S SOLDER



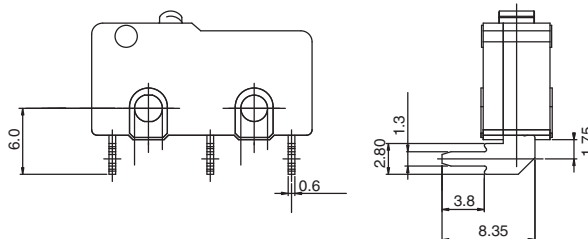
Q QUICK CONNECT



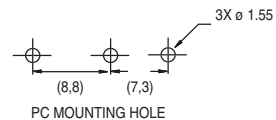
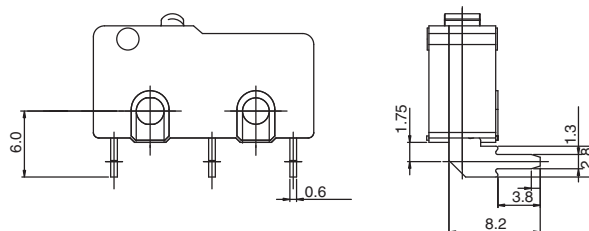
P PC THRU HOLE



L LEFT FORM PC



R RIGHT FORM PC



Dimensions are shown: mm
Specifications and dimensions subject to change

www.ck-components.com

C&K

Snap-acting

LCA Series Subminiature Snap-acting Switches

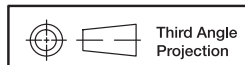
CIRCUITRY



- C** SPDT (Single Pole, Double Throw)
- W** SPST N.C. (Single Pole, Single Throw, Normally Closed)
- Y** SPST N.O. (Single Pole, Single Throw, Normally Open)



Snap-acting



Third Angle
Projection

*Dimensions are shown: mm
Specifications and dimensions subject to change*