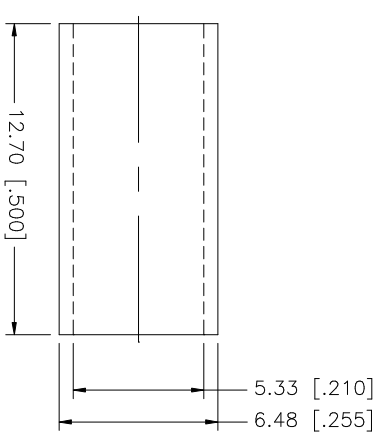
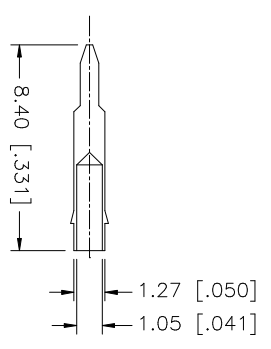
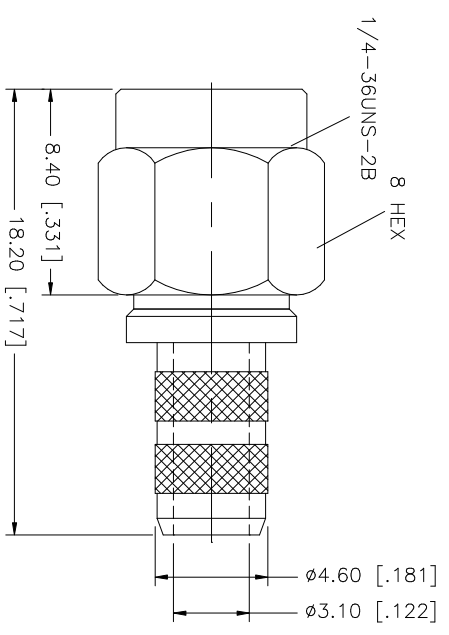
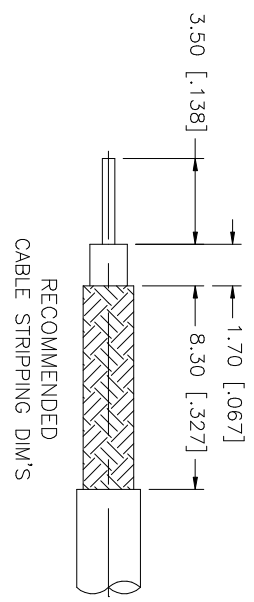


REV.	DATE	DESCRIPTION
NC	01/29/03	INITIAL RELEASE



NOTE:
1. CRIMPED FERRULE
HEX CRIMP SIZE .213"

NO.	DESCRIPTION	MATERIAL	FINISH	QTY	UNLESS OTHERWISE SPECIFIED DIMENSIONS ARE IN MILLIMETERS DIMENSIONS IN [] ARE IN INCHES AND FOR CUSTOMER REFERENCE ONLY.	UNLESS OTHERWISE SPECIFIED TOLERANCES FOR MILLIMETERS ARE:	UNLESS OTHERWISE SPECIFIED TOLERANCES FOR INCHES ARE:	APPROVALS	DATE	PART DESCRIPTION	
8										<p style="text-align: center;">Amphenol Connex</p> <p style="text-align: center;">SMA CRIMP PLUG (FOR RG-58C/U, 58/U CABLE)</p> <p style="text-align: center;">1 32113</p>	
7	FERRULE	COPPER	GOLD	1		0.5 - 8mm ± 0.20mm	.020 - .315 = ± 0.007"	DRAWN	G.R.S.		01/29/03
6	GASKET	SILICONE	RED	1		8 - 30mm ± 0.40mm	.315 - 1.180 = ± 0.015"	CHECKED			
5	CONTACT PIN	BRASS	GOLD	1		30 - 120mm ± 0.50mm	1.180 - 4.724 = ± 0.020"	ISSUED			
4	RETAINER RING	BER. COPPER	NATURAL	1				SHEET	1 OF 1		
3	INSULATOR	TEFLON	NATURAL	1							
2	SHELL/BODY	BRASS	GOLD	1							
1	DESCRIPTION										