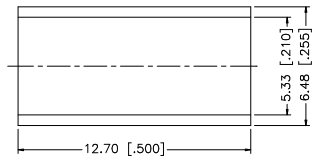
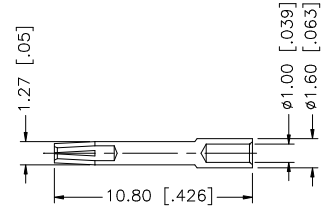
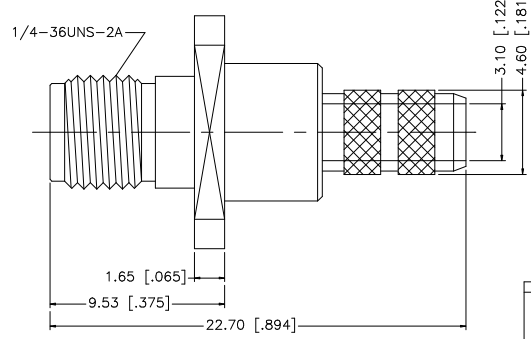
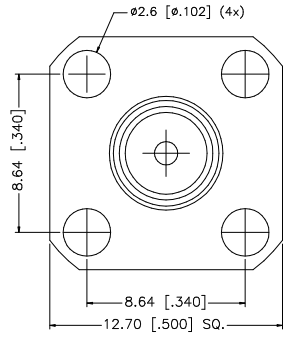
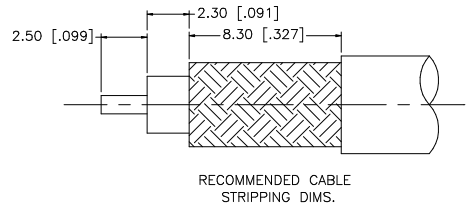


REV.	DATE	DESCRIPTION
NC	09/27/06	INITIAL RELEASE



NOTE:  
 1. CRIMPED FERRULE HEX CRIMP SIZE .213"  
 2. CONTACT PIN TO SOLDER

REV.	DATE	DESCRIPTION
NC	09/27/06	INITIAL RELEASE
8		
7		
6		
5		
4	FERRULE	COPPER GOLD 1
3	CONTACT PIN	BER. COPPER GOLD 1
2	INSULATOR	TEFLON NATURAL 1
1	BODY	BRASS GOLD 1
	DESCRIPTION	MATERIAL FINISH QTY

UNLESS OTHERWISE SPECIFIED DIMENSIONS ARE IN MILLIMETERS. DIMENSIONS IN [ ] ARE IN INCHES AND FOR CUSTOMER REFERENCE ONLY.	APPROVALS	DATE	<h1 style="color: blue; margin: 0;">Amphenol Connex</h1>
UNLESS OTHERWISE SPECIFIED TOLERANCES FOR MILLIMETERS ARE: 0.5 - 8mm ± 0.20mm 8 - 30mm ± 0.40mm 30 - 120mm ± 0.50mm	DRAWN G.R.S.	09/27/06	
UNLESS OTHERWISE SPECIFIED TOLERANCES FOR INCHES ARE: .020 - .315 = ± 0.007" .315 - 1.180 = ± 0.015" 1.180 - 4.724 = ± 0.020"	CHECKED		
DO NOT SCALE DRAWING	ISSUED		
	SHEET 1 OF 1		
	CAD FILE C:/132/132120.DWG		PART DESCRIPTION <h2 style="text-align: center; margin: 0;">SMA PANEL CRIMP JACK (FOR RG-58/U CABLE)</h2>
			PART NO. 132120
			DWG. NO. 132120.DWG
			REV. NC SIZE A SCALE NA