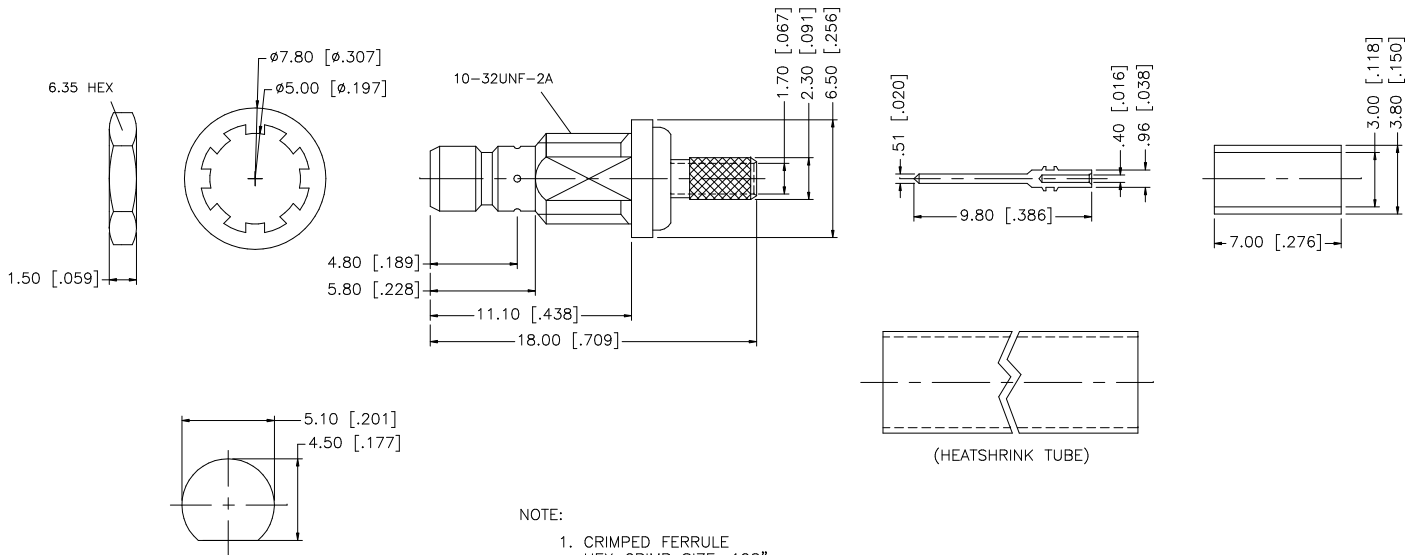
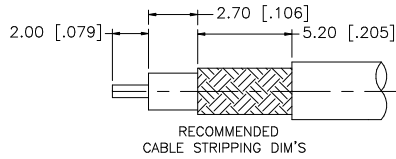


REV.	DATE	DESCRIPTION
A	07/21/05	UPDATE DRAWING FORMAT



- NOTE:
1. CRIMPED FERRULE  
HEX CRIMP SIZE .128"
  2. CRIMPED CONTACT PIN  
SQ. CRIMP SIZE 0.7mm
  3. MAX. PANEL THICKNESS = 2.4mm

DESCRIPTION	MATERIAL	FINISH	QTY	UNLESS OTHERWISE SPECIFIED DIMENSIONS ARE IN MILLIMETERS. DIMENSIONS IN [ ] ARE IN INCHES AND FOR CUSTOMER REFERENCE ONLY.	APPROVALS	DATE	<h2 style="color: blue; margin: 0;">Amphenol Connex</h2>	
8					DRAWN	G.R.S.		07/21/05
7	HEAT SHRINK TUBE	BLACK	1	UNLESS OTHERWISE SPECIFIED TOLERANCES FOR MILLIMETERS ARE: 0.5 - 8mm ± 0.20mm 8 - 30mm ± 0.40mm 30 - 120mm ± 0.50mm	CHECKED			PART DESCRIPTION
6	FERRULE	COPPER	GOLD	1	ISSUED			SMB MINI BULKHEAD JACK - 75ohm (FOR RG-179/U CABLE)
5	HEX NUT	BRASS	GOLD	1	SHEET	1 OF 1	PART NO.	
4	LOCK WASHER	BRASS	GOLD	1	CAD FILE	C:/142/142191-75.DWG	142191-75	
3	CONTACT PIN	BRASS	GOLD	1			DWG. NO.	
2	INSULATOR	TEFLON	NATURAL	1			REV. A	
1	BODY	BRASS	GOLD	1			SIZE A	
				UNLESS OTHERWISE SPECIFIED TOLERANCES FOR INCHES ARE: .020 - .315 = ± 0.007" .315 - 1.180 = ± 0.015" 1.180 - 4.724 = ± 0.020"			SCALE	
				DO NOT SCALE DRAWING			NA	