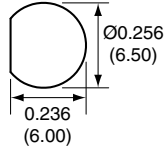
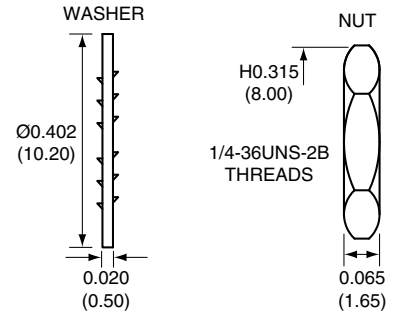
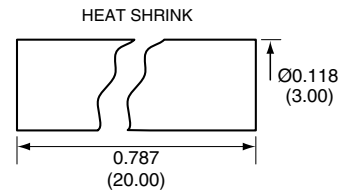
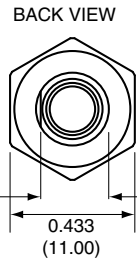
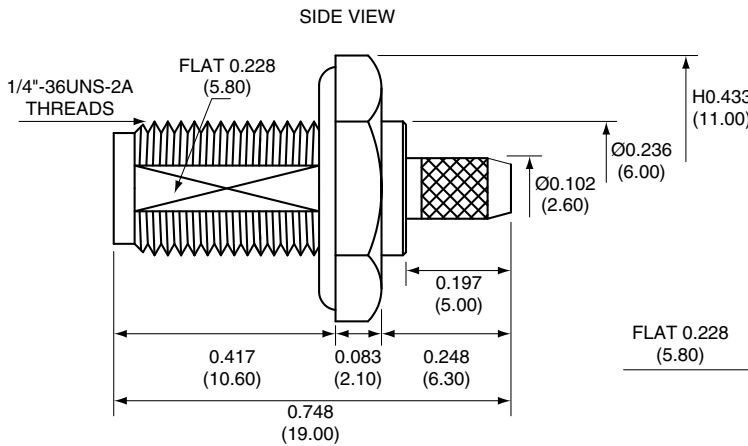
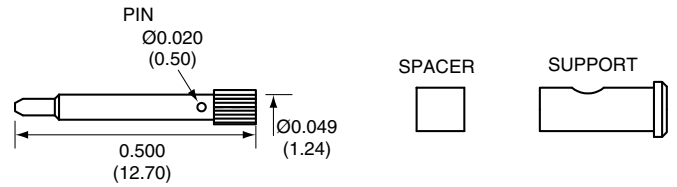


Description	Material	Finish
Body	Brass	Nickel
Pin	BE CU	Gold
Insulation	Teflon	Teflon
O Ring	Si Rubber	Rubber
Washer	Brass	Nickel
Nut	Brass	Nickel
Spacer	Teflon	Teflon
Support	Brass	Nickel
Heat Shrink	Polyolefin	Black

RECOMMENDED MOUNTING HOLE



REVISIONS			
REV	DESCRIPTION	DATE	APPV
A	Add heat shrink, new frame, revised stripping instruct./dims	4/26/10	CJ



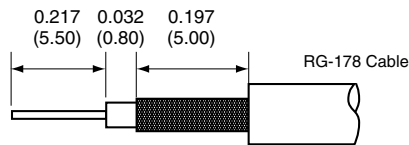
CONREVSMA014-R178 ASSEMBLY INSTRUCTIONS

- Strip the cable to the recommended dimensions.
- Slide the coax into the support until the outside insulation bottoms out against the inside shoulder of the support.
- Solder the support onto the braid.
- Place the spacer onto the center conductor.
- Solder or crimp the pin onto the center conductor.
- Insert the pin, center conductor, spacer, and support into the body until the top of the pin is flush to end of the body.
- Crimp the tail of the body onto the support with a 0.093" hex crimp tool.

NOTES: (UNLESS OTHERWISE SPECIFIED)

- ALL DIMENSIONS ARE IN INCHES [mm].
- DIMENSIONS APPLY AFTER FINISHING.
- MANUFACTURE TO BE COMPLIANT WITH EU RoHS DIRECTIVE.
- SAFETY BREAK ALL SHARP CORNERS AND EDGES .02 MAXIMUM.

RECOMMENDED CABLE STRIPPING DIMENSIONS



WARNING: THIS DRAWING CONTAINS PROPRIETARY INFORMATION THAT IS THE SOLE PROPERTY OF CONNECTOR CITY, AND SHALL BE TREATED AS SUCH. NO DISCLOSURE OR REPRODUCTION OF THIS DOCUMENT IS PERMITTED, IN WHOLE OR IN PART, WITHOUT THE EXPRESS WRITTEN PERMISSION OF CONNECTOR CITY OR ITS DESIGNATED AGENTS.

**CONNECTOR CITY**  
THE VALUE OF CONNECTIONS  
159 ORT LANE  
MERLIN, OR 97532

TITLE:  
RP-SMA FEMALE BULKHEAD MOUNT CABLE  
END CRIMP WITH O-RING FOR RG178 CABLE

MATERIAL:	TOLERANCES: .020 [0.50]-.200 [5.00]= ± .008 [0.20] .200 [5.00]-1.200 [30.00]= ± .016 [0.40] 1.20 [30.0]-4.75 [120.0]= ± .024 [0.60] 4.75 [120.0]-12.40 [315.0]= ± .040 [1.0]	PROJECTION: 
FINISH:	DRAWN: CJ DT: 4/26/10	ANGLES: ± 1°
	ENGR:	DT:

SIZE	DWG. NO.	REV
A	CONREVSMA014-R178	A
SCALE: 2:1	DO NOT SCALE DRAWING	SHEET 1 OF 1

LDCFCC\_A