

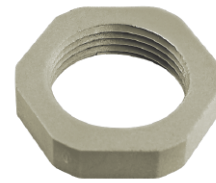
**Material:**

- Polyamide 6
- 25 % Glass fiber Reinforced

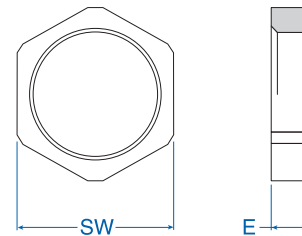
**Characteristic feature:**

- PG / metric and NPT thread

<b>Temperature Range PA</b> -30 to 120°C (-22 to 248°F)
--



Thread	Thickness (E) mm	SW mm	Cat. No. Light grey	Cat. No. Black	Std. Pk.
<b>PG (once according to DIN 46 320)</b>					
PG 7	5	19	7211881	7211851	50
PG 9	5	22	7211882	7211852	50
PG 11	5	24	7211883	7211853	50
PG 13.5	6	27	7211884	7211854	50
PG 16	6	30	7211885	7211855	50
PG 21	6.5	36	7211886	7211856	20
PG 29	7.5	46	7211887	7211857	20
PG 36*	8	60	7211888	7211858	10
PG 42*	9	65	7211889	7211859	5
PG 48*	9.5	70	7211890	7211860	5
<b>Metric</b>					
M 12 x 1.5	5	19	7211979	7211974	50
M 16 x 1.5	5	22	7211980	7211975	50
M 20 x 1.5	5	24	7211981	7211976	50
M 25 x 1.5	6	30	7211982	7211977	50
M 32 x 1.5	7.5	38	7211983	7211978	50
M 40 x 1.5	8	50	7211984	7211990	20
M 50 x 1.5*	9	60	7211985	7211991	10
M 63 x 1.5*	10	75	7211986	7211992	5
<b>NPT</b>					
NPT 3/8"	5	22	7211485	7211495	50
NPT 1/2"	6	27	7211486	7211496	20
NPT 3/4"	6.5	36	7211487	7211497	20
NPT 1"	7	41	7211488	7211498	20

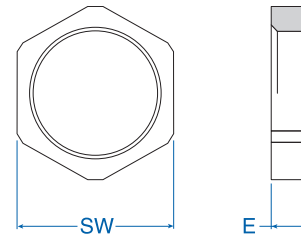


## Locknuts / Nickel-Plated Brass

**Material:**  
• Nickel-plated brass

**Characteristics:**  
• PG and Metric thread

Thread	Thickness (E) mm	SW mm	Cat. No.	Std. Pk.
<b>PG (once according to DIN 46 320)</b>				
PG 7	2.9	15	6000070	50
PG 9	2.9	18	6000096	50
PG 11	2.9	21	6000118	50
PG 13.5	3.1	23	6000134	50
PG 16	3.1	26	6000169	50
PG 21	3.6	32	6000215	20
PG 29	4.1	41	6000290	20
PG 36	5.1	51	6000363	10
PG 42	5.1	60	6000428	5
PG 48	5.6	64	6000487	5
<b>Metric</b>				
M 12 x 1.5	3	15	6004121	50
M 16 x 1.5	3	20	6004164	50
M 20 x 1.5	3.5	24	6004202	50
M 25 x 1.5	3.5	30	6004253	25
M 32 x 1.5	4.5	35	6004326	20
M 40 x 1.5	4.5	45	6004407	10
M 50 x 1.5	4.5	55	6004504	10
M 63 x 1.5	6	70	6004636	5



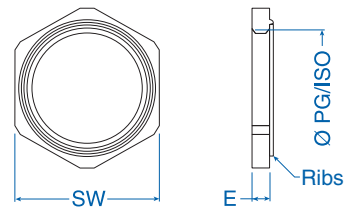
## Lock Nuts, Ribbed, Nickel-Plated Brass

**Material:**  
• Nickel-plated brass

**Characteristics:**  
• PG and Metric thread

**Applications:**  
• EMC applications

Thread	Thickness (E) mm	SW mm	Cat. No.	Std. Pk.
<b>PG</b>				
PG 7	2.9	15	6011007	50
PG 9	2.9	18	6011009	50
PG 11	3.1	21	6011011	50
PG 13.5	3.1	23	6011013	50
PG 16	3.1	26	6011016	50
PG 21	3.6	32	6011021	20
PG 29	4.1	41	6011029	20
PG 36	5.1	51	6011036	10
PG 42	5.1	60	6011042	10
PG 48	5.6	64	6011048	10
<b>Metric</b>				
M 12 x 1.5	3	15	6011112	50
M 16 x 1.5	3	20	6011116	50
M 20 x 1.5	3.5	24	6011120	50
M 25 x 1.5	3.5	30	6011125	25
M 32 x 1.5	4.5	35	6011132	20
M 40 x 1.5	4.5	45	6011140	10
M 50 x 1.5	5.5	55	6011150	10
M 63 x 1.5	6	70	6011163	10



\* Not glass fiber reinforced.