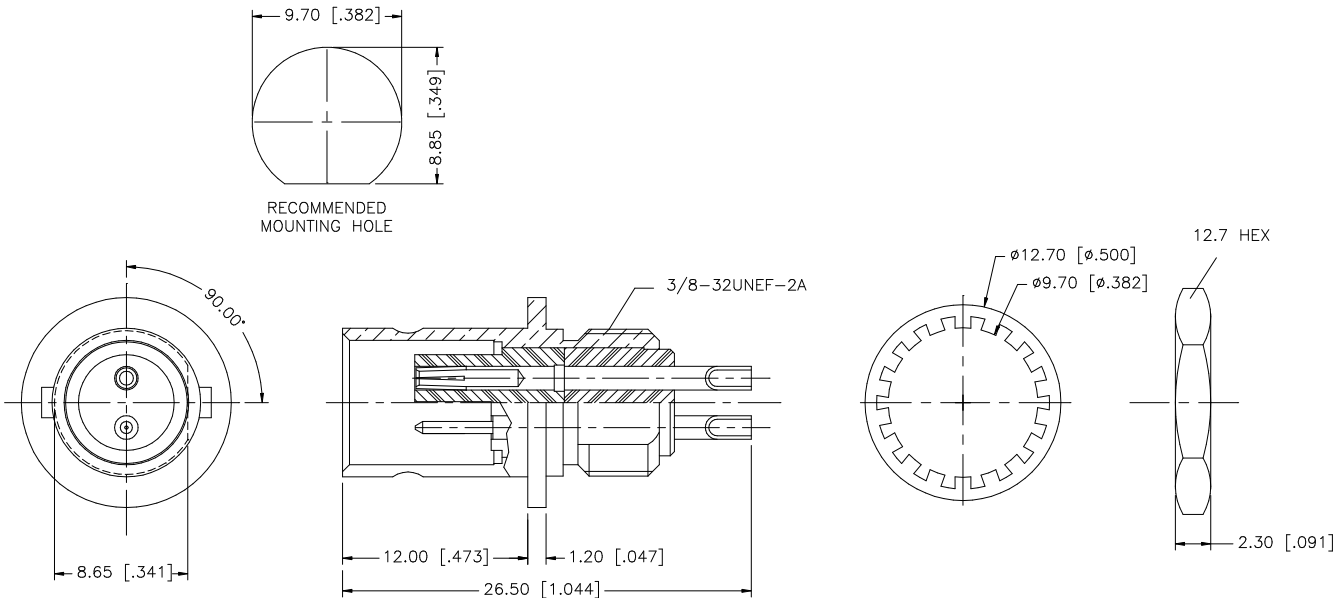


REV.	DATE	DESCRIPTION
NC	05/31/07	INITIAL RELEASE



8					UNLESS OTHERWISE SPECIFIED DIMENSIONS ARE IN MILLIMETERS. DIMENSIONS IN [] ARE IN INCHES AND FOR CUSTOMER REFERENCE ONLY. UNLESS OTHERWISE SPECIFIED TOLERANCES FOR MILLIMETERS ARE: 0.5 - 8mm ± 0.20mm 8 - 30mm ± 0.40mm 30 - 120mm ± 0.50mm UNLESS OTHERWISE SPECIFIED TOLERANCES FOR INCHES ARE: .020 - .315 = ± 0.007" .315 - 1.180 = ± 0.015" 1.180 - 4.724 = ± 0.020"	APPROVALS	DATE	Amphenol Connex							
7						DRAWN	G.R.S.						05/31/07		
6	HEX NUT	BRASS	NICKEL	1		CHECKED			PART DESCRIPTION	BNC TWIN BULKHEAD RECEPT. JACK					
5	LOCK WASHER	BRASS	NICKEL	1		ISSUED									
4	CONTACT PIN	PHOS. BRONZE	GOLD	1		SHEET	1 OF 1								
3	CONTACT PIN	BRASS	GOLD	1				PART NO.	162109						
2	INSULATOR	PBT	WHITE	2											
1	BODY	BRASS	NICKEL	1											
	DESCRIPTION	MATERIAL	FINISH	QTY	DO NOT SCALE DRAWING	CAD FILE	C:/162/162109.DWG	DWG. NO.	162109.DWG	REV.	NC	SIZE	A	SCALE	NA