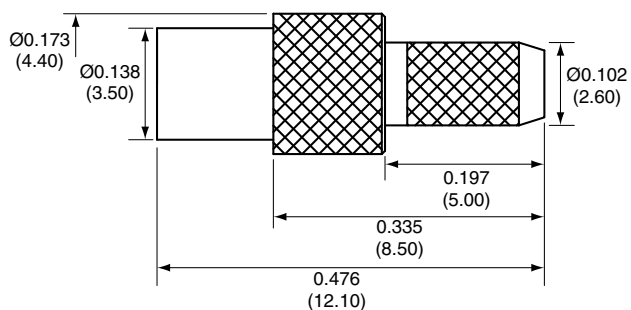
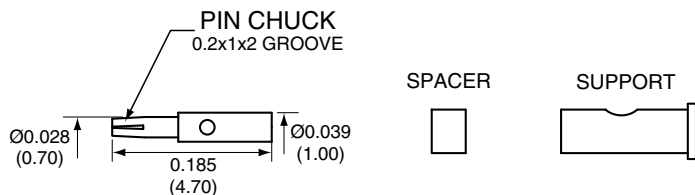


1		
Description	Material	Finish
Body	Brass	Gold
Socket	BE CU	Gold
Insulation	Teflon	Teflon
Support	Brass	Gold
Spacer	Teflon	Teflon

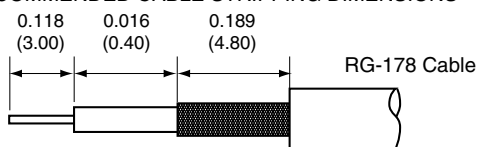
SIDE VIEW



SOCKET



RECOMMENDED CABLE STRIPPING DIMENSIONS



CONMMCX011-R178 ASSEMBLY INSTRUCTIONS

1. Strip the cable to the recommended dimensions.
2. Solder the support onto the braid.
3. Place the spacer onto the center conductor.
4. Solder or crimp the socket onto the center conductor.
5. Insert the socket, center conductor, spacer, and support into the body until the top of the socket is even with the white insulation in the body.
6. Crimp the tail of the body onto the support with a hex crimp tool.

Title		CONMMCX011-R178		Revision: 1.0	
Part No.		CONMMCX011-R178		Revision: 1.0	
Dimensions:		INCHES (mm)		Date: 6/11/2007	
				Sheet 1 of 1	

CONNECTOR CITY
159 ORT LANE
MERLIN, OR 97532
PH (541)-471-6256
FAX (541)-471-6251

CONNECTOR CITY
THE VALUE OF CONNECTIONS