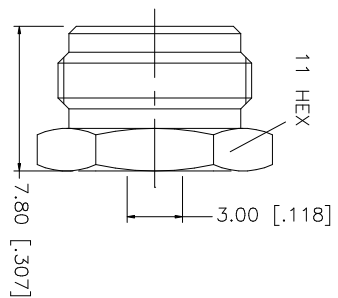
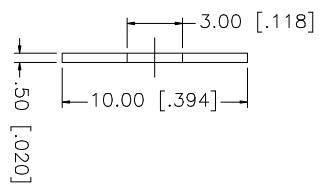
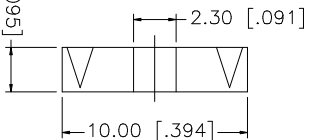
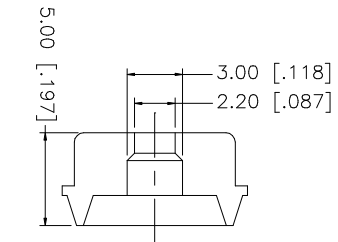
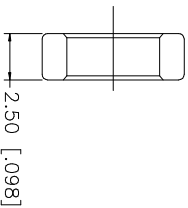
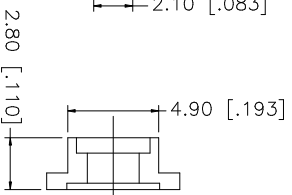
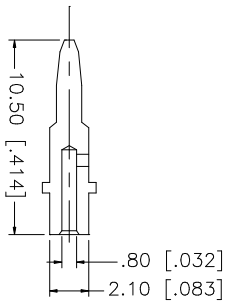
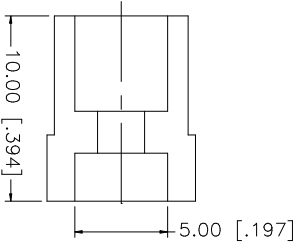
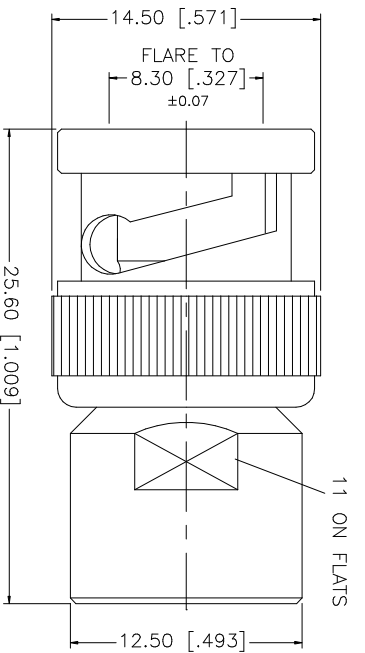
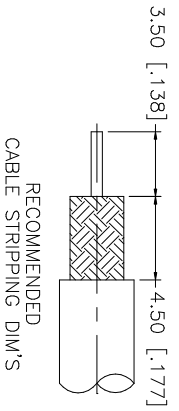


REV.	DATE	DESCRIPTION
NC	04/05/03	INITIAL RELEASE
A	08/04/05	UPDATE DRAWING - REPLACING 112477-10



NOTE: CONTACT PIN TO SOLDER

Amphenol Connex

PART DESCRIPTION
BNC CLAMP PLUG
(FOR RG-174/U, 188A/U, 316/U)

PART NO. 112477

QTY	DESCRIPTION	MATERIAL	FINISH	DO NOT SCALE DRAWING	CAD FILE	APPROVALS	DATE	DWG. NO.	REV.	SIZE	SCALE
1	HEX NUT	BRASS	NICKEL	UNLESS OTHERWISE SPECIFIED DIMENSIONS ARE IN MILLIMETERS. DIMENSIONS IN [] ARE IN INCHES AND FOR CUSTOMER REFERENCE ONLY.	C:/112/112477.DWG	G.R.S.	08/04/05	112477.DWG	A	A	NA
1	WASHER	BRASS	NICKEL	UNLESS OTHERWISE SPECIFIED TOLERANCES FOR MILLIMETERS ARE:							
1	GASKET	SILICONE	RED	0.5 - 8mm ± 0.20mm							
1	RING	BRASS	NICKEL	8 - 30mm ± 0.40mm							
1	CONTACT PIN	BRASS	GOLD	30 - 120mm ± 0.50mm							
1	INSULATOR	TEFLON	NATURAL	UNLESS OTHERWISE SPECIFIED TOLERANCES FOR INCHES ARE:							
1	SHELL/BODY	BRASS	NICKEL	.020 - .315 = ± 0.007"							
				.315 - 1.180 = ± 0.015"							
				1.180 - 4.724 = ± 0.020"							