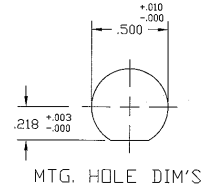
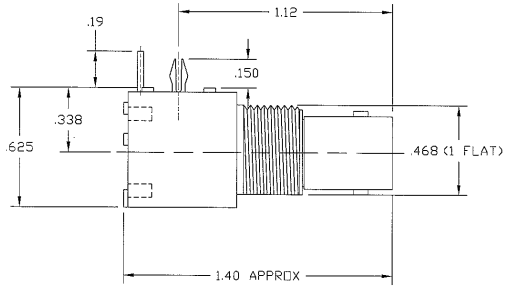
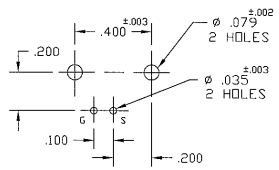
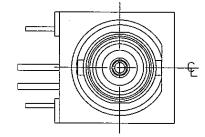
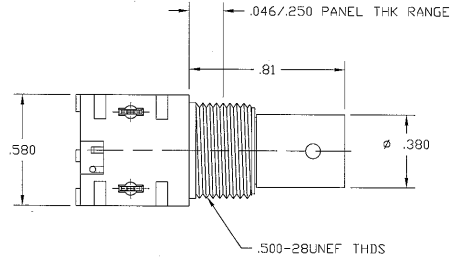
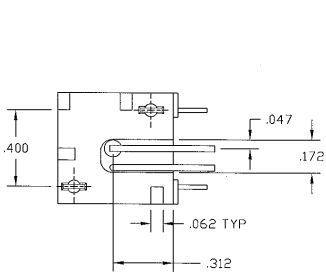


NOTES:

1. MATERIAL: OUTER INSULATOR CASING - WHITE VALDX  
INSULATOR - WHITE NDRYL  
CENTER CONTACT - GOLD PLATED PHOSPHOR BRONZE  
BODY - NICKEL PLATED ZINC CASTING  
MOUNTING LEGS - TIN PLATED  
TERMINALS - TIN PLATED COPPER WIRE
2. WHEN ASSEMBLING TO PANEL, MOUNTING HARDWARE (SEPARATELY SUPPLIED) MUST BE TIGHTENED TO 10 IN LBS. MIN. 15 IN LBS. MAX.
3. DO NOT SCALE THIS DRAWING.
4. UNLESS OTHERWISE SPECIFIED, ALL DIMENSIONS ARE AFTER PLATING.

|                   |     |                               |          |       |       |
|-------------------|-----|-------------------------------|----------|-------|-------|
| 31-5431-1010      |     | REVISIONS                     |          |       |       |
| DRAWING NO.       | REV | DESCRIPTION                   | DATE     | ECO   | APPR  |
| THIRD ANGLE PROJ. | A   | OFFICIAL ENG. RELEASE TO MFG. | 01/20/93 | 39301 | JM/RV |
|                   | B   | SEE SHEET 1 FOR REVISIONS     | 4/30/96  | 40246 | JM/DR |
|                   | C   | SEE SHEET 1 FOR REVISIONS     | 11/18/96 | 41637 | CPM/  |
|                   | DN  | SEE SHEET 1 FOR REVISIONS     | 2/3/98   | 45255 | CPM/  |



CUSTOMER OUTLINE DRAWING

|   |                           |  |                  |  |   |
|---|---------------------------|--|------------------|--|---|
| UNLESS OTHERWISE SPECIFIED, DIMENSIONS ARE IN INCHES AND TOLERANCES ARE:<br>2 PLACE DECIMAL ±.015 (0.381 mm)<br>3 PLACE DECIMAL ±.005 (0.127 mm)<br>ANGLES ± 1°   | MATERIAL                  | DRAWN<br>J. MULVEY                                   | DATE<br>8-24-92  | TITLE<br>BNC JACK<br>RT/ANGLE MOUNT<br>PCB RECEIPT (WHT) | <b>Amphenol</b><br>Amphenol Corporation<br>RF/Microwave Operations<br>Danbury, Conn. U.S.A. 06810 |
|   | REFERENCE<br>EAR 962338-2 | ENGINEER<br>R. VACCARD                               | DATE<br>1-20-93  | APPROVED<br>J. MULVEY                                    |   |
| NOTICE - These drawings, specifications, or other data (1) are, and remain the property of Amphenol Corp. (2) must be returned upon request, and (3) are confidential and not to be disclosed to any person other than those to whom they are given by Amphenol Corp. The furnishing of these drawings, specifications, or other data by Amphenol Corp., or to any other person to anyone for any purpose is not to be regarded by implication or otherwise in any manner licensing, granting rights or permitting such holder or any other person to manufacture, use or sell any product, process or design, patented or otherwise, that may in any way be related to or disclosed by said drawings, specifications, or other data. |                           | CAD FILE<br>H:\DEPT611\BNC\031\ASSY\5431\1010SH2.DWG | CODE ID<br>74868 | DWG SIZE<br>B  | DRAWING NO.<br>31-5431-1010   |
|   |                           |  |                  | SCALE: 2:1   | SHEET 2 OF 2  |
|   |                           |  |                  | ISSUE<br>D   |   |