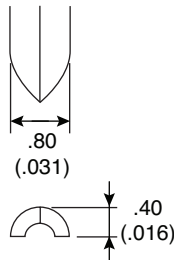
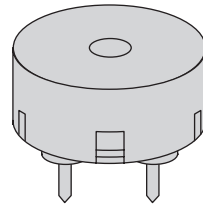
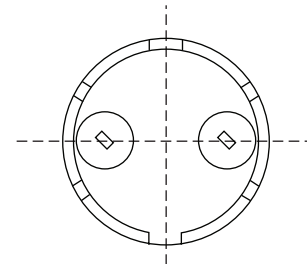
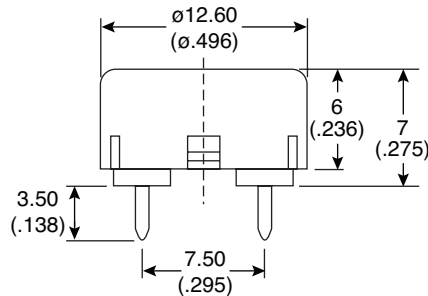


Part Number:

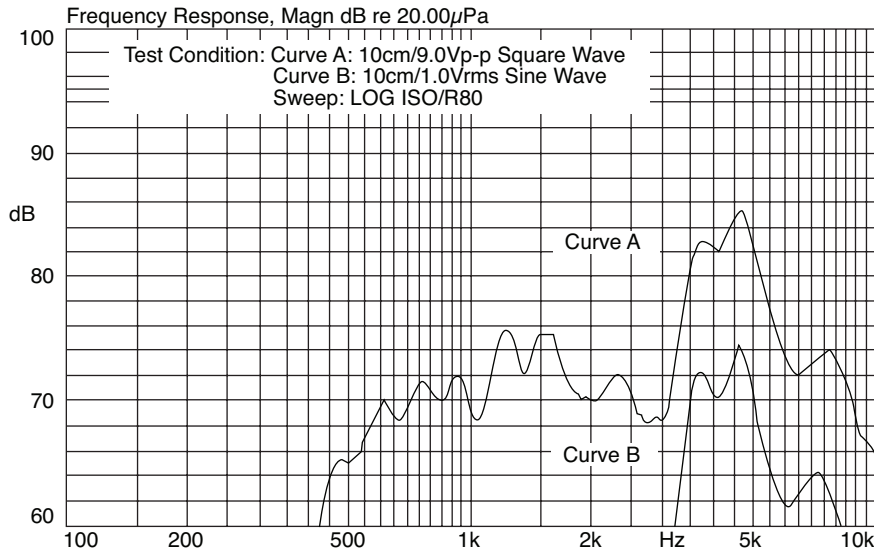
254-PB507-ROX



Pin Terminal



Piezoelectric Buzzer
(External Drive)



KT-400285

Electrical Specifications:

- Sound Pressure Level: 80dB min. at 4.0KHz/9.0Vp-p Square Wave/10cm.
70dB min. at 4.0KHz/1Vrms Sine Wave/10cm.
- Capacitance: 7,500pF ± 30% at 120Hz
- Current Consumption: 3mA max. at 4.0KHz/9.0Vp-p Square Wave
- Allowable Input Voltage: 15Vp-p max.

Mechanical Specifications:

- Operating Temperature: -20°C to +70°C
- Storage Temperature: -40°C to +85°C

Materials:

- Case: PBT (UL 94V-0)
- Lead Pin: Phosphor Bronze
- Weight: 0.7 grams

Note:

- RoHS compliant by exemption

Specifications are subject to change without notice. No liability or warranty implied by this information. Environmental compliance based on producer documentation.

Available from Mouser Electronics

www.mouser.com

(800) 346-6873