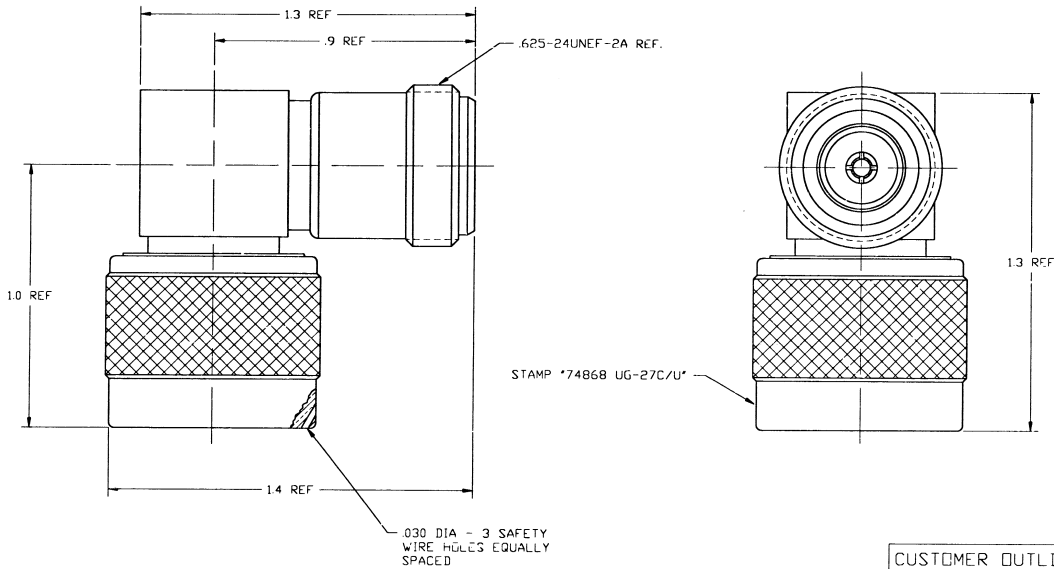


NOTES:

1. MATERIALS OF CONSTRUCTION:
 COUPLING NUT, OUTER CONTACT, BODY SUB-ASS'Y. & BUSHING - BRASS, NICKEL PLATED.
 CONTACT - BERYLLIUM COPPER, SILVER PLATED.
 INSULATORS - TFE.
 GASKET - SILICONE RUBBER.
 RETAINING RING - PHOSPHUR BRONZE, WAX DIPPED.
2. DO NOT SCALE THIS DRAWING.
3. UNLESS OTHERWISE SPECIFIED, ALL DIMENSIONS ARE AFTER PLATING.

82-213		REVISIONS			
DRAWING NO.	REV	DESCRIPTION	DATE	ECO	APPR
THIRD ANGLE PROJ.	A	RELEASE TO MFG.			
	S	ADDED SHEET 2	5/14/97	41954	CPM/10



UNLESS OTHERWISE SPECIFIED, DIMENSIONS ARE IN INCHES AND TOLERANCES ARE:
 2 PLACE DECIMAL ±.015 (0.381 mm)
 3 PLACE DECIMAL ±.005 (0.127 mm)
 ANGLES ± 1°

NOTICE - These drawings, specifications, or other data (1) are, and remain the property of Amphenol Corp. (2) must be returned upon request, and (3) are confidential and not to be disclosed to any person other than those to whom they are given by Amphenol Corp. The furnishing of these drawings, specifications, or other data by Amphenol Corp., or to any other person to anyone for any purpose is not to be regarded by implication or otherwise in any manner licensing, granting rights or permitting such holder or any other person to manufacture, use or sell any product, process or design, patented or otherwise, that may in any way be related to or disclosed by said drawings, specifications, or other data.

MATERIAL	DRAWN	DATE	TITLE	Amphenol	
	C. McGRATH	4/24/97	TYPE N ADAPTOR	Amphenol Corporation	
REFERENCE	ENGINEER	DATE	RIGHT ANGLE	RF/Microwave Operations	
	G. TILTON	4/24/97	UG-27 C/U	Danbury, Conn. U.S.A. 06810	
	APPROVED	DATE	CUSTOMER OUTLINE	SCALE: 3:1	SHEET 2 OF 2
	G. TILTON	4/24/97			
	CAD FILE	CODE ID	DWG SIZE	DRAWING NO.	REV
	H:\DEPT611\N\082\ASSY\213SHT2	74868	B	82-213	S