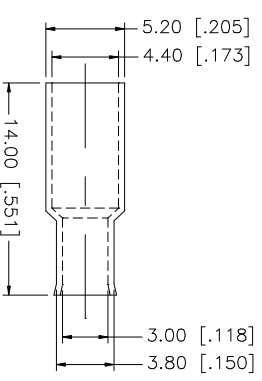
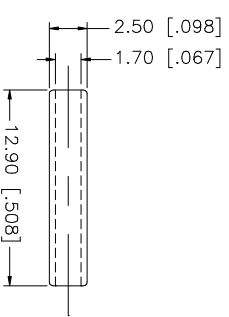
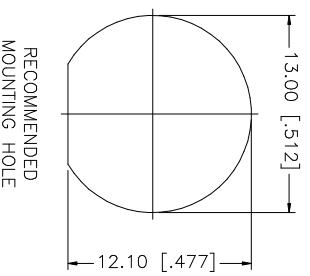
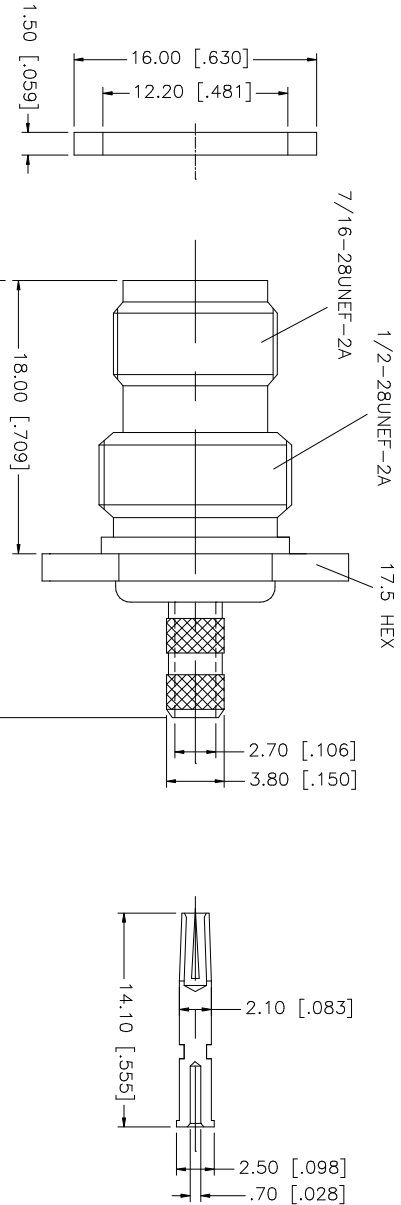
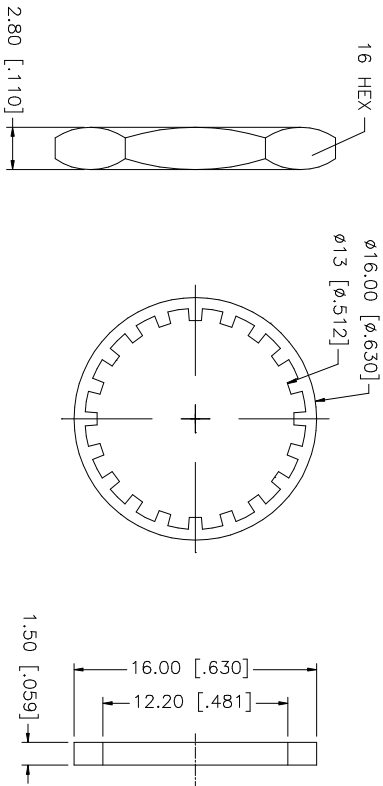
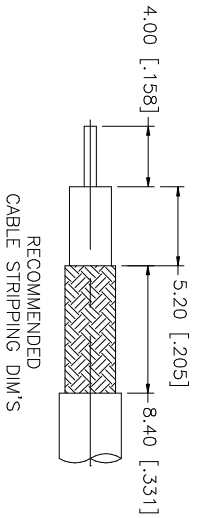


| REV. | DATE     | DESCRIPTION     |
|------|----------|-----------------|
| NC   | 01/20/03 | INITIAL RELEASE |



- NOTE:
1. CRIMPED FERRULE  
HEX CRIMP SIZE .178"
  2. CRIMPED CONTACT PIN  
HEX CRIMP SIZE .068"

| QTY | FINISH  | MATERIAL     | DESCRIPTION  |
|-----|---------|--------------|--------------|
| 1   | NICKEL  | COPPER       | FERRULE      |
| 1   | NATURAL | DELRIN       | SLEEVE       |
| 1   | NICKEL  | BRASS        | HEX NUT      |
| 1   | NICKEL  | BRASS        | LOCK WASHER  |
| 1   | GOLD    | PHOS. BRONZE | CONTACT PIN  |
| 1   | RED     | RUBBER       | GASKET       |
| 1   | NICKEL  | BRASS        | BARREL       |
| 1   | NATURAL | DELRIN       | INSULATOR    |
| 1   | NICKEL  | BRASS        | HOUSING/BODY |

| APPROVALS | DATE     |
|-----------|----------|
| G.R.S.    | 01/20/03 |

| CAD FILE          | DWG. NO.   | REV. | NC | SIZE | SCALE |
|-------------------|------------|------|----|------|-------|
| C:/122/122192.DWG | 122192.DWG | NC   |    | A    | NA    |

| DO NOT SCALE DRAWING  |
|---|
| UNLESS OTHERWISE SPECIFIED DIMENSIONS ARE IN MILLIMETERS. DIMENSIONS IN [ ] ARE IN INCHES AND FOR CUSTOMER REFERENCE ONLY. UNLESS OTHERWISE SPECIFIED TOLERANCES FOR MILLIMETERS ARE:<br>0.5 - 8mm ± 0.20mm<br>8 - 30mm ± 0.40mm<br>30 - 120mm ± 0.50mm<br>UNLESS OTHERWISE SPECIFIED TOLERANCES FOR INCHES ARE:<br>.020 - .315 = ± 0.007"<br>.315 - 1.180 = ± 0.015"<br>1.180 - 4.724 = ± 0.020" |

| PART DESCRIPTION  | PART NO. |
|---|----------|
| TNC BULKHEAD CRIMP JACK<br>(FOR RG174/u, 188A/u, 316/u CABLE) | 122192   |

**Amphenol** **Comnex**