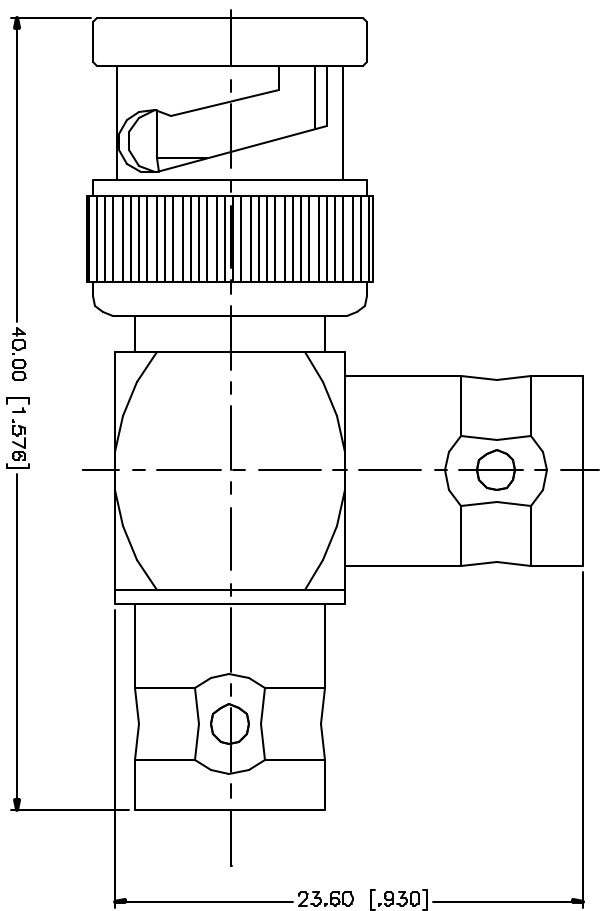


REV.	DATE	DESCRIPTION
A	11/21/03	UPDATE DRAWING FORMAT
B	06/04/05	MODIFY BODY PLATING TO NICKEL



REV.	DATE	DESCRIPTION	MATERIAL	FINISH	QTY
8					
7					
6					
5					
4					
3			BRASS	GOLD	1
2			DELFIN	NATURAL	1
1			BRASS	NICKEL	1
		DESCRIPTION			

<p>UNLESS OTHERWISE SPECIFIED DIMENSIONS ARE IN MILLIMETERS UNLESS NOTED IN [ ] ARE IN INCHES AND FOR DIMENSIONS NOTED IN [ ] ARE IN INCHES</p> <p>UNLESS OTHERWISE SPECIFIED TOLERANCES FOR MILLIMETERS ARE:</p> <p>0.5 - 8mm ± 0.20mm  8 - 30mm ± 0.40mm  30 - 120mm ± 0.50mm</p> <p>UNLESS OTHERWISE SPECIFIED TOLERANCES FOR INCHES ARE:</p> <p>0.25 - .315 = ± 0.0075  .315 - 1.180 = ± 0.015  1.180 - 4.724 = ± 0.025</p> <p>DO NOT SCALE DRAWING</p>	<p>APPROVALS</p> <p>DRAWN G.R.S. DATE 05/04/05</p> <p>CHECKED</p> <p>RELEA</p> <p>SHEET 1 OF 1</p>	<p>CAD FILE C:/112/112567.DWG</p> <p>DWG. NO. 112567DWG</p> <p>REV. B</p> <p>SIZE A</p> <p>SCALE NA</p>
---	--	---

<p><b>Amphenol Connex</b></p> <p>PART DESCRIPTION</p> <p><b>BNC MALE TO DOUBLE BNC FEMALE</b></p> <p>PART NO. <b>112567</b></p>	
---	--